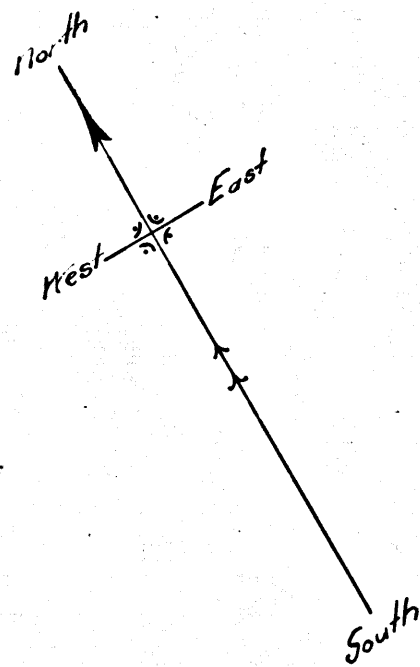


Filed July 15, 1898
at 4 P.M.

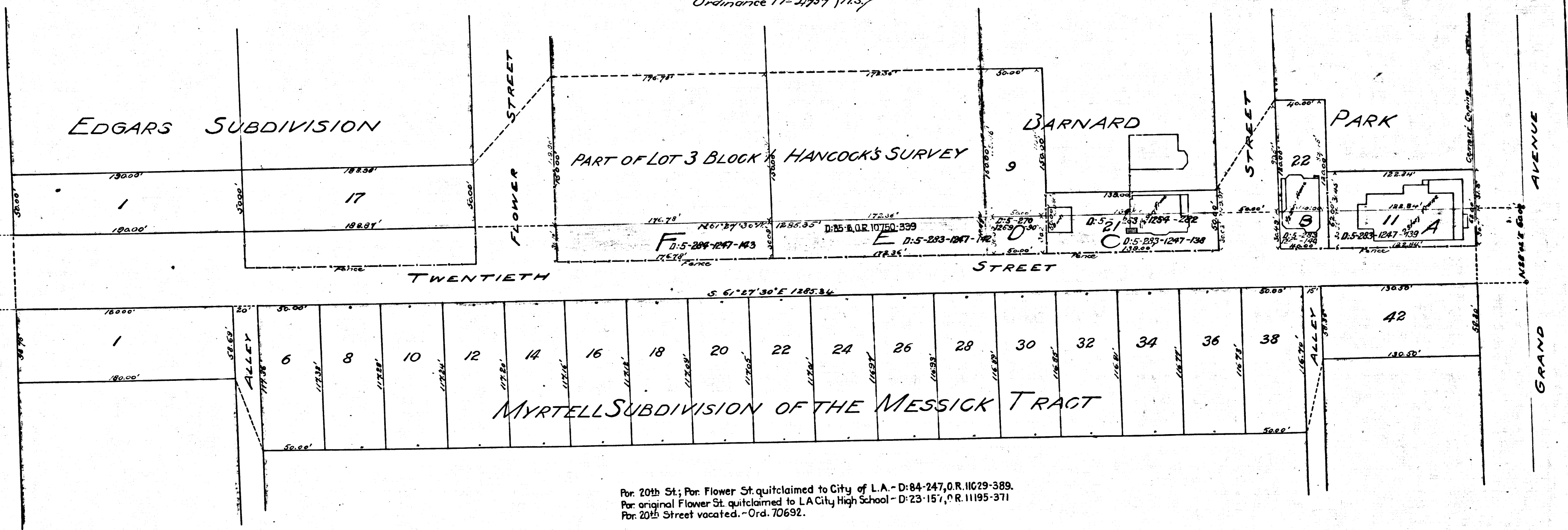
MAP
OF THE
ASSESSMENT DISTRICT
FOR THE WIDENING OF
TWENTIETH STREET
BETWEEN
FIGUEROA ST. AND GRAND AVE.
IN THE
CITY OF LOS ANGELES
J.H. Docksweller, City Engineer, March, 1898.
Scale 30 feet, to 1 inch.



Note - Land to be taken shown colored red,
Exterior boundaries of Assessment district shown
colored green.

Ordinance 17-4759 (17.5)

FIGUEROA STREET
STREET



For 20th St; For Flower St. quitclaimed to City of L.A. - D: 84-247, O.R. 11629-389.
For original Flower St. quitclaimed to L.A. City High School - D: 23-157, O.R. 11195-371
For 20th Street vacated. - Ord. 70692.

R.F. 118