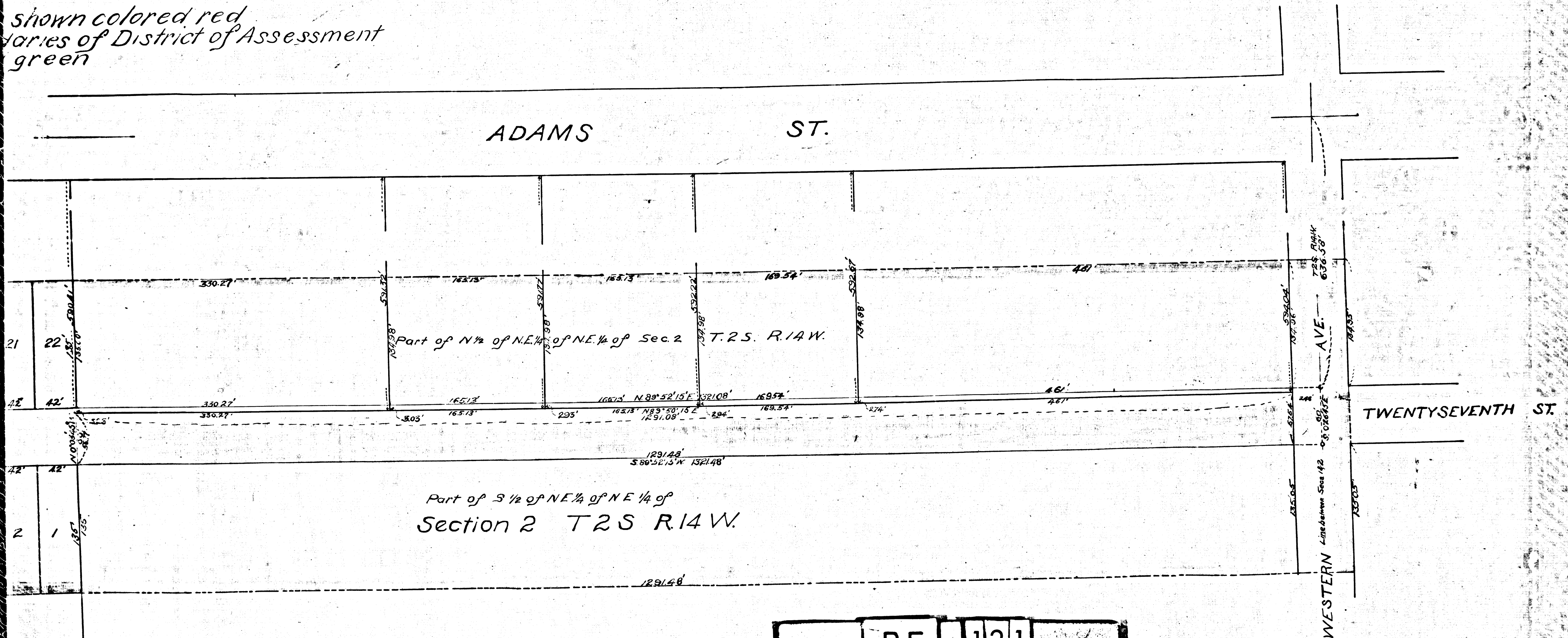


MAP
 of land to be taken
 DISTRICT OF ASSESSMENT
 for the opening of
 TWENTY-SEVENTH STREET
 BETWEEN AVENUE AND THE BOULEVARD TRACT
 CITY OF LOS ANGELES CAL.

W. EILER City Engineer JULY 1898
 Scale 1/4" = 10' ORDINANCES No. 5096 and 5192

Boundaries shown colored red
 Boundaries of District of Assessment
 shown green

Filed Sep. 21. 1898
 at 15 min past 11 A.M.



R.F. 121
 A 2 OF A 2