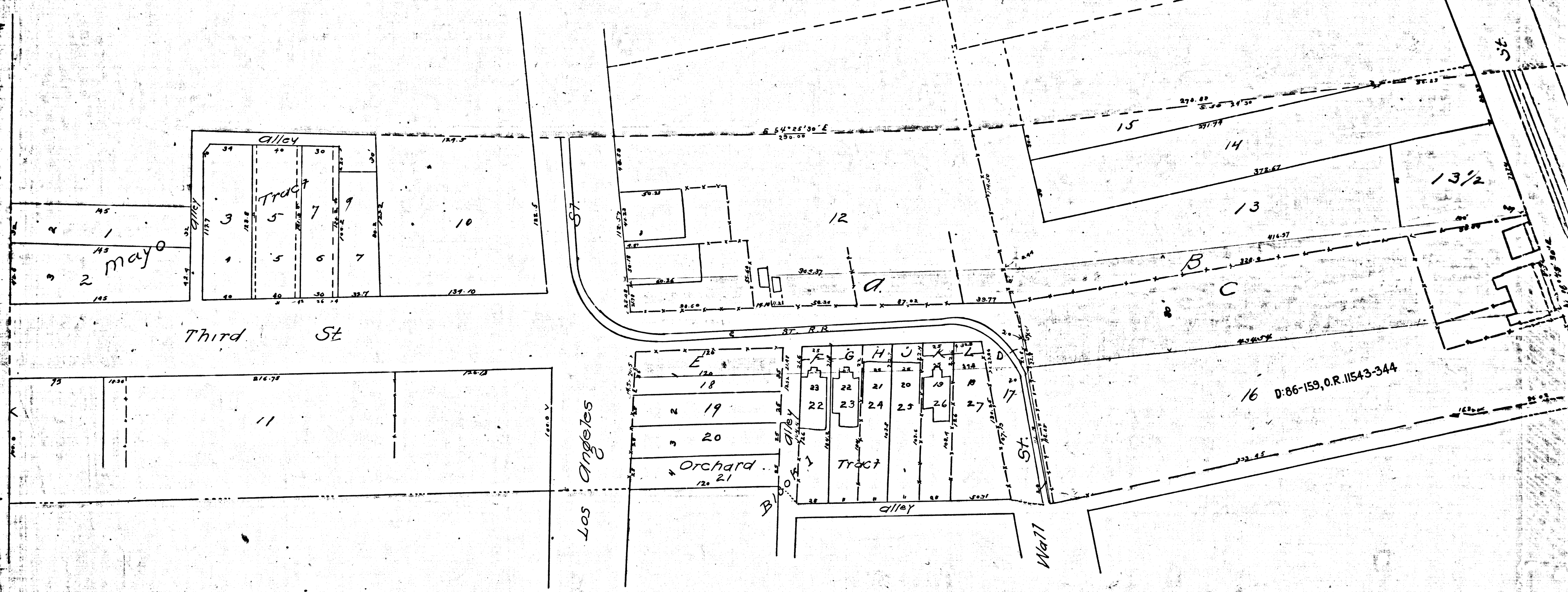


Main St

St



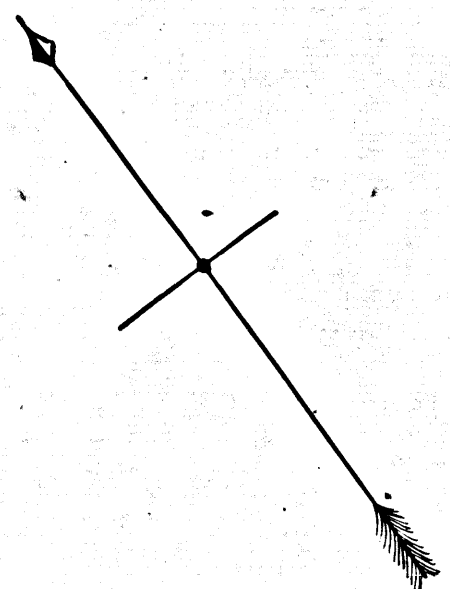
mayo

Third St

Los Angeles

R.F. 122
A1 OF A3

16 D:86-159, O.R. 11543-344

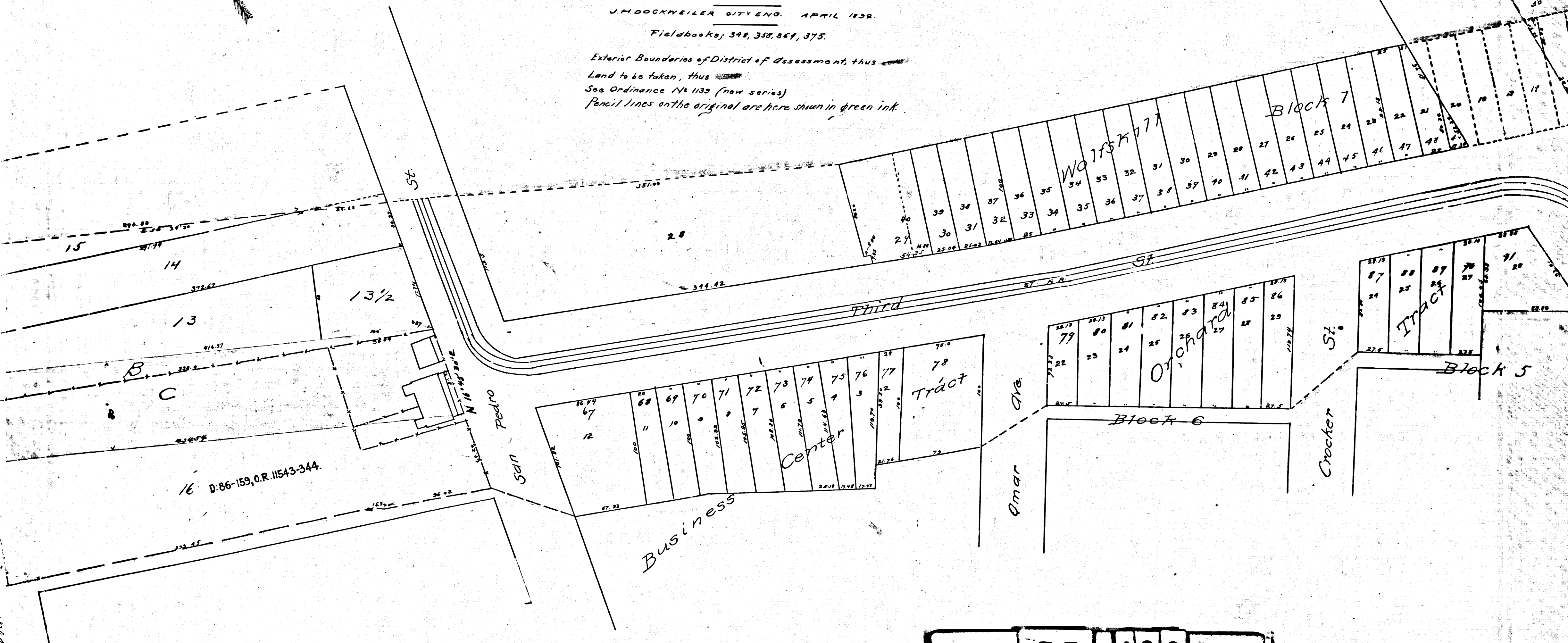


MAP
 ASSESSMENT DISTRICT
 FOR THE
 Opening, Widening and Extending
 OF
THIRD STREET
 BETWEEN
 Los Angeles and San Pedro Sts.

Filed at the request of Freeman G. Teed
 Aug. 31, 1892.
 J.A. Kelly, County Recorder.

SCALE - 50 FT. TO 1 IN.
 J.M. DOCKWEILER CITY ENG. APRIL 1892.
 Fieldbooks; 348, 358, 861, 375.

Exterior Boundaries of District of Assessment, thus
 Land to be taken, thus
 See Ordinance No 1133 (new series)
 Pencil lines on the original are here shown in green ink.



16 D:86-159, O.R. 11543-344.

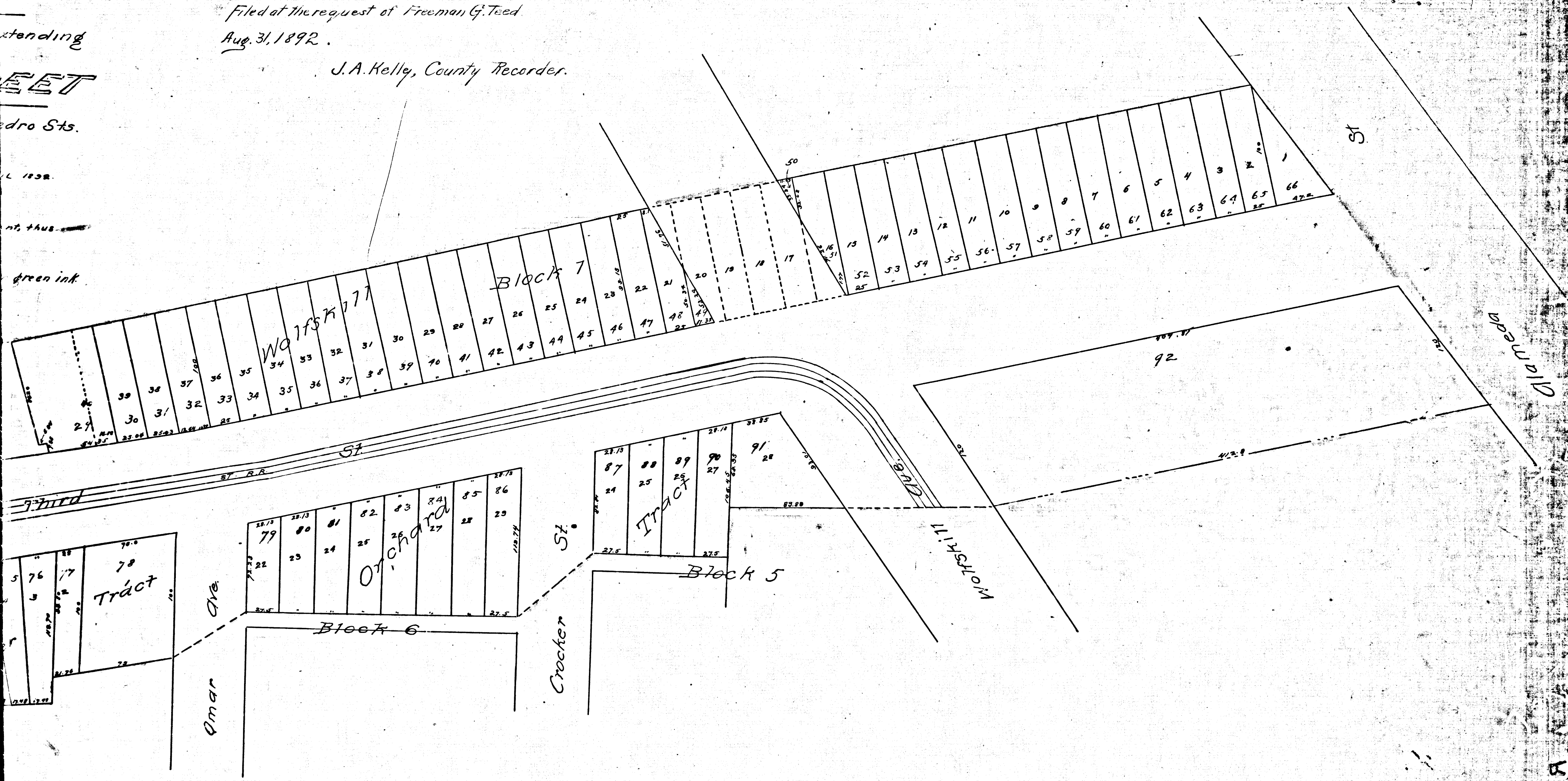
R.F.	122
A 2	OF A 3

Filed at the request of Freeman G. Teed
Aug. 31, 1892.

J.A. Kelly, County Recorder.

100 FT
dro Sts.

green ink



R.F.	122	
A3	OF	A3