

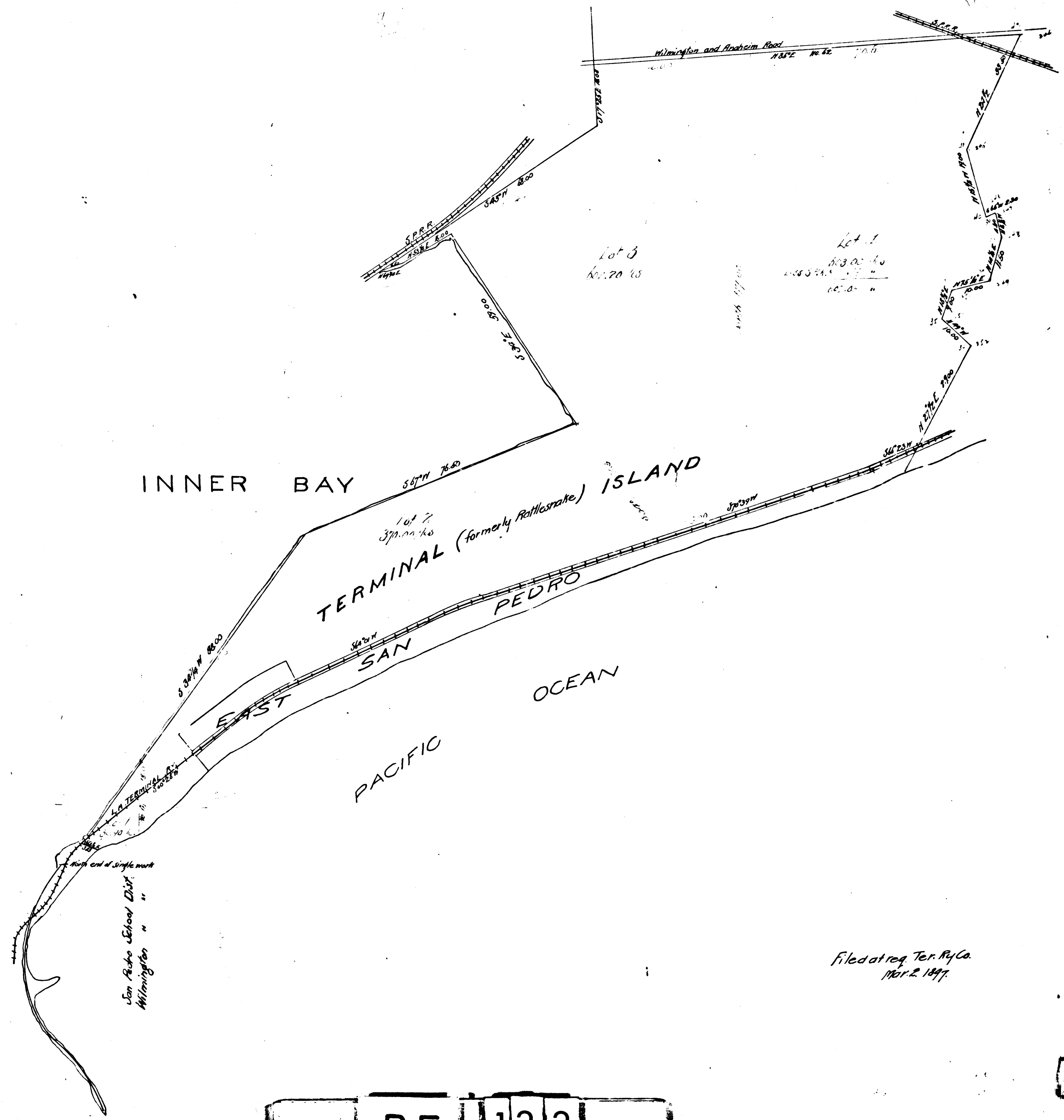
Terminal Island
Scale 20 chs.

Orange figures are arbitrary subdivisions for assessment purposes only.

I hereby certify that I am the agent for the owners of the land subdivided as shown by this map and further that such map is filed solely for the purpose of assessment under Section 3629 Political Code.

Los Angeles, California
January, 1897.

Los Angeles Terminal Land Co
Frank B. Kelly Vice President.



Filed at req. Ter. Ry Co
Nov. 2, 1897.

R.F. 133