

Filed Jan. 21st 1899
At 37 min. past 3 P.M.

MAP OF CHESTER PLACE

Recorder No 134

being a subdivision of a part of Lot 8 Block 17
Hancocks Survey of the City of Los Angeles
State of California

Surveyed at the request of Charles Silent
in January 1894 by

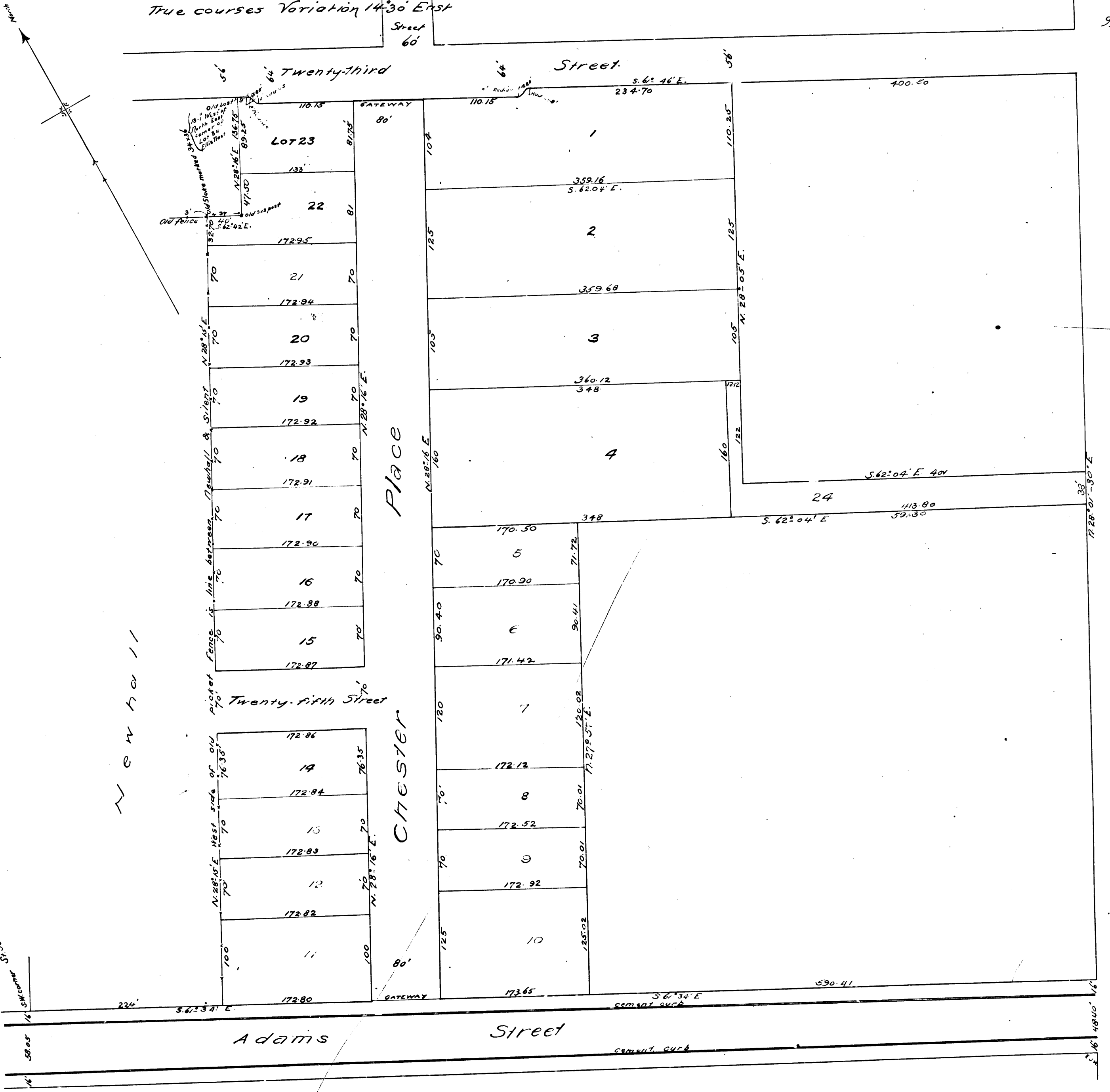
B. Rowan Surveyor.

Scale 80 feet to one inch

True courses Variation 14°30' East

Street
60'

99'



R.F. 134

N O W N

Street

FIGUEROA

99'