

MAP OF PECK'S SUBDIVISION

of Lot J and portion of Lot H of the
Partition of the Rancho Los Palos
Verdes Case No. 2373 District Court
of Los Angeles County Cal.

Surveyed in Sept. & Oct. 1897

By J.A. Bernal, Sur & C.E.

Scale: 5 Chs. to one inch

Long Beach & Redondo Beach Rd. D-1-80-D-118-A-B
Portion of Lot I - See D-27-44 - D-6656-2.

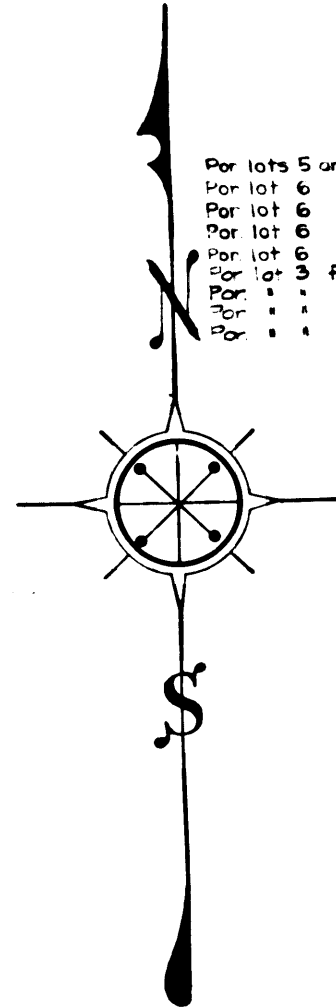
Wilmington & Gulf Ports Rd. change 1 to Lomita Blvd. D-49-119
For lots 10 & 11 for Normandie & Vermont Aves. - C.S. - 311-2. H 57 9-10
For lot 12 for Normandie & Vermont Aves. - See C.S. 311-2.

For Figueroa St see C.S. B-1279
Lot B of Lot J & por Lot "H" for School purp. - E-77-69 OR 23772-135
- E-77-69 OR 23721-395
- E-77-70 OR 23721-395

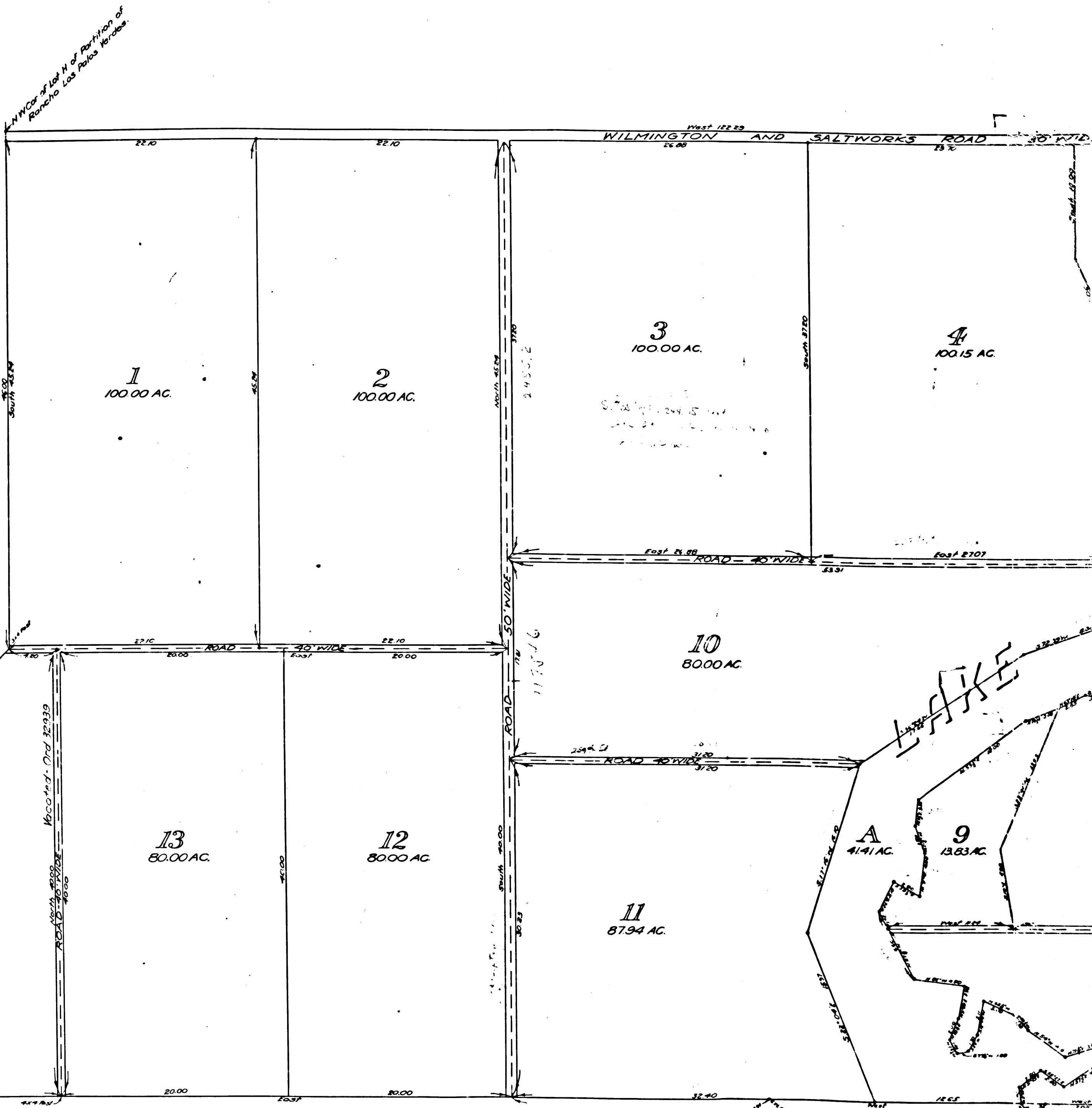
Por lot 5 for Bixby Slough - E-127-281 to 282 (3 deeds)
Por lots 5 and 6, to State for Freeway Purpose - E-43-289

Note: All areas and distances are
computed to centers of roads, except
roads on north and east side of tract.

Por lots 5 and 6, to State for Freeway purpose - E-145-54
Por lot 6 - E-145-55, OR 47221-201
Por lot 6 - E-145-55, OR 47221-204
Por lot 6 - E-145-56, OR 47217-322
Por lot 6 - E-145-56, OR 47217-306
Por lot 3 for Lomita Blvd. - E-199-218, OR D 1021-254
Por - E-199-218, OR D 1021-257
Por - E-199-219, OR D 1022-261
Por - E-199-219, OR D 1022-264



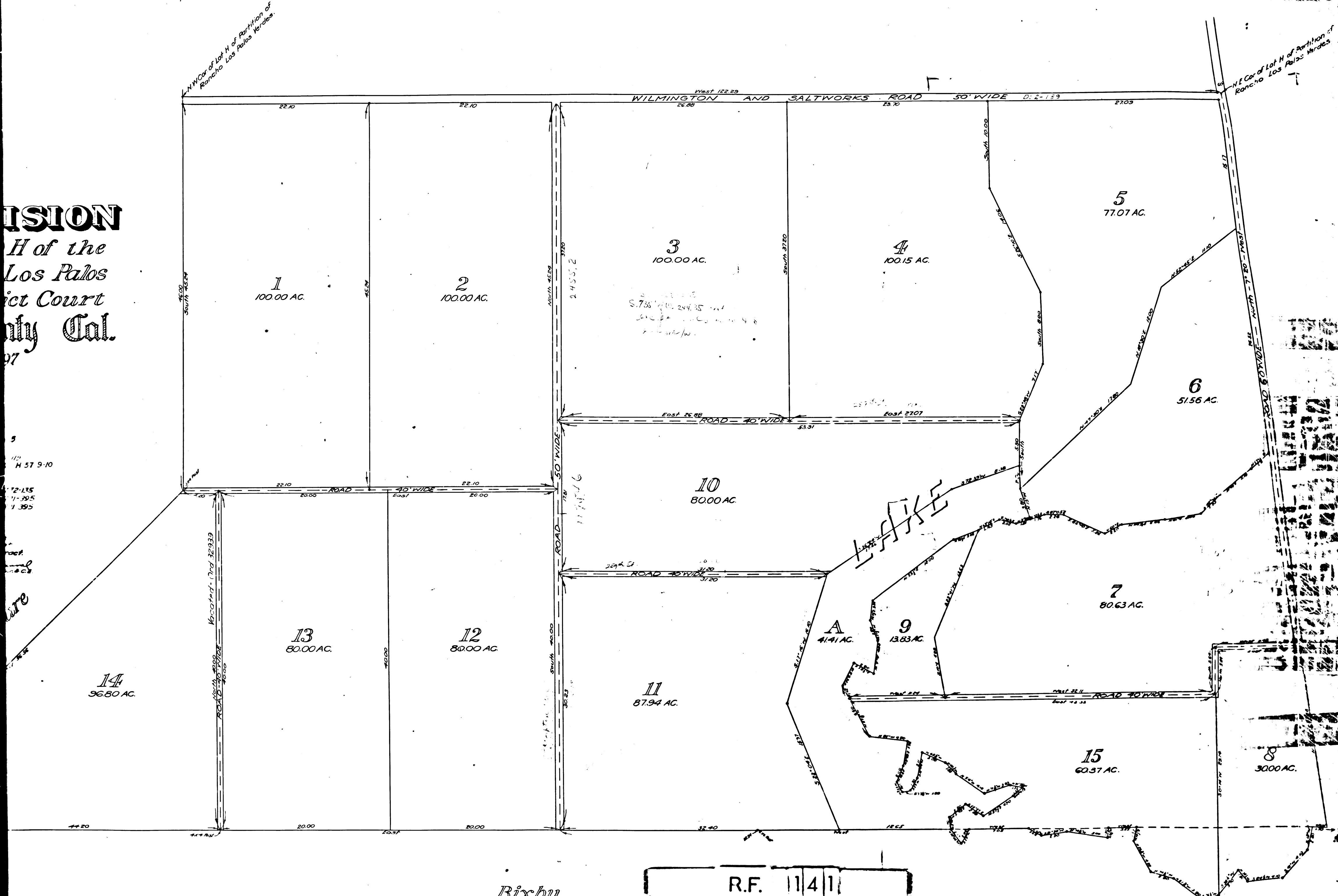
Narbourne



R.F. 1141
A1 OF A21

Bixby

VISION
 H of the
 Los Palos
 ict Court
 nty Cal.
 97



5
 H 57 9-10
 12-135
 11-195
 1-395

Bixby

R.F. 1141
 A 2 OF A 2