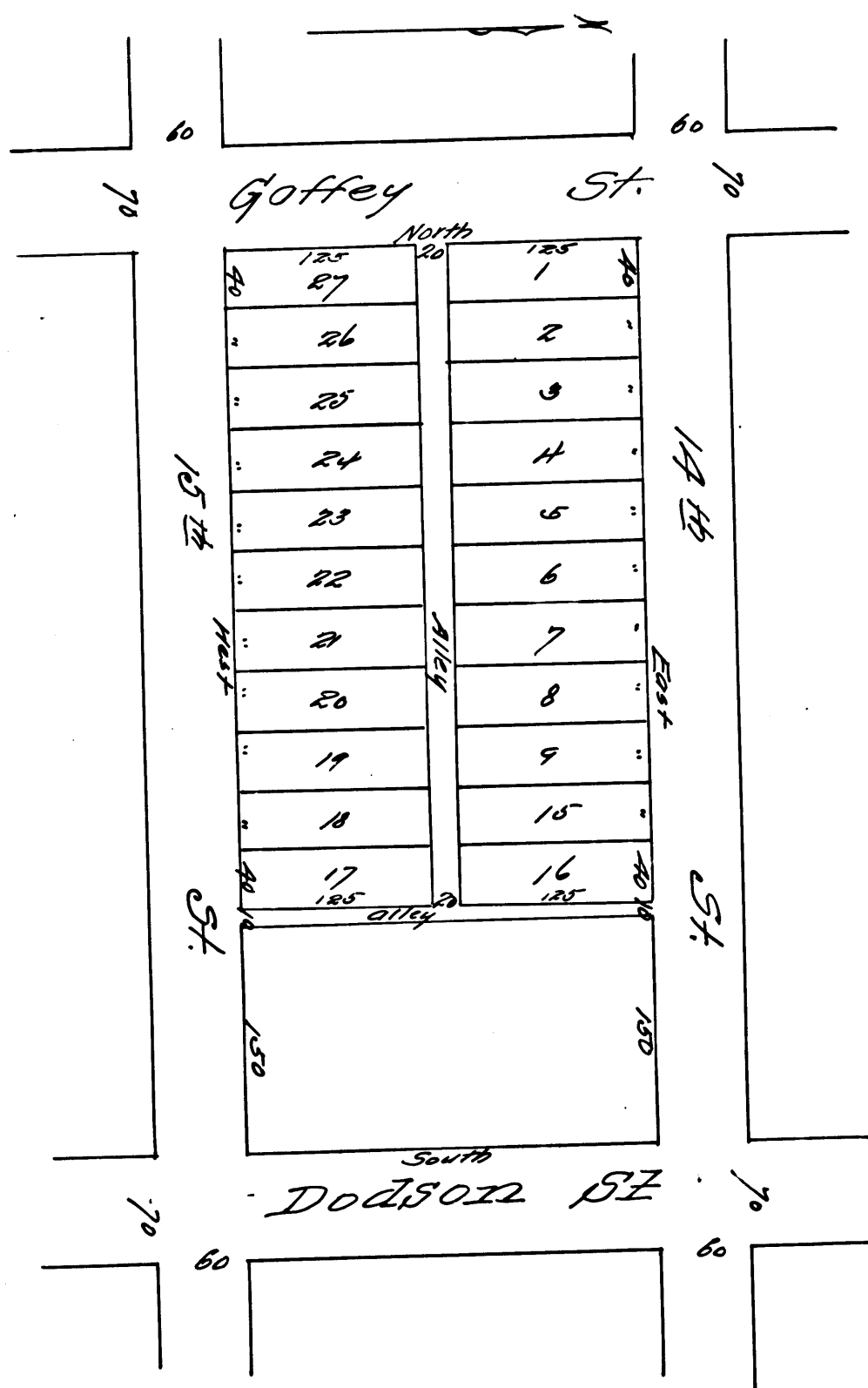


Clay's
Subdivision
of the East 400 feet of
Block 16
RUDECINDA TRACT

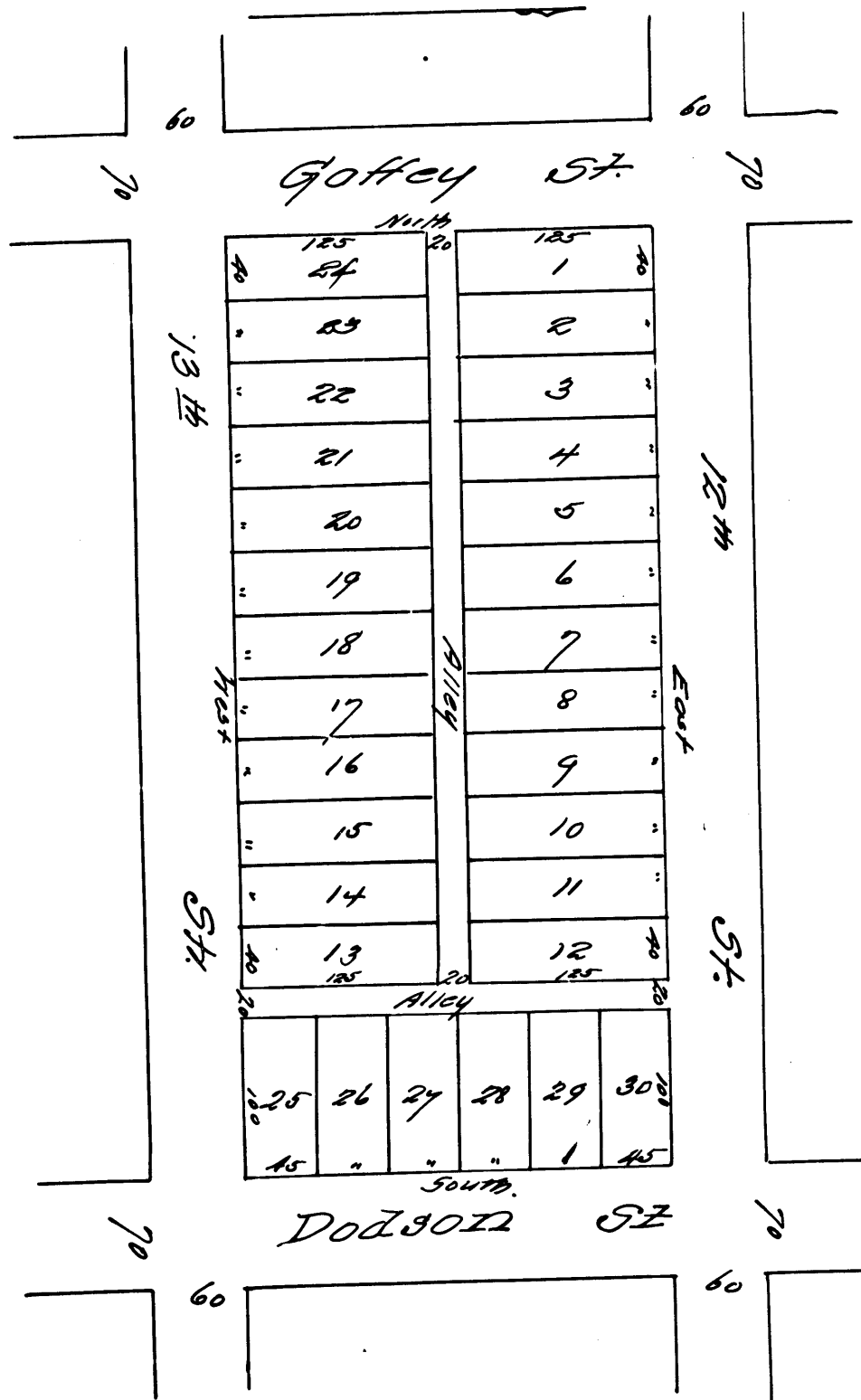
Surveyed by V.J. Floman
1897
Scale 100 feet to one inch



R.F. 142

Clay's
Subdivision
of
Block 12
RUDECINDA TRACT

Surveyed by V.J. Floman
1897
Scale = 100 feet to one in.



Filed Mar 26, 1897