

GAFFEY AND WARD

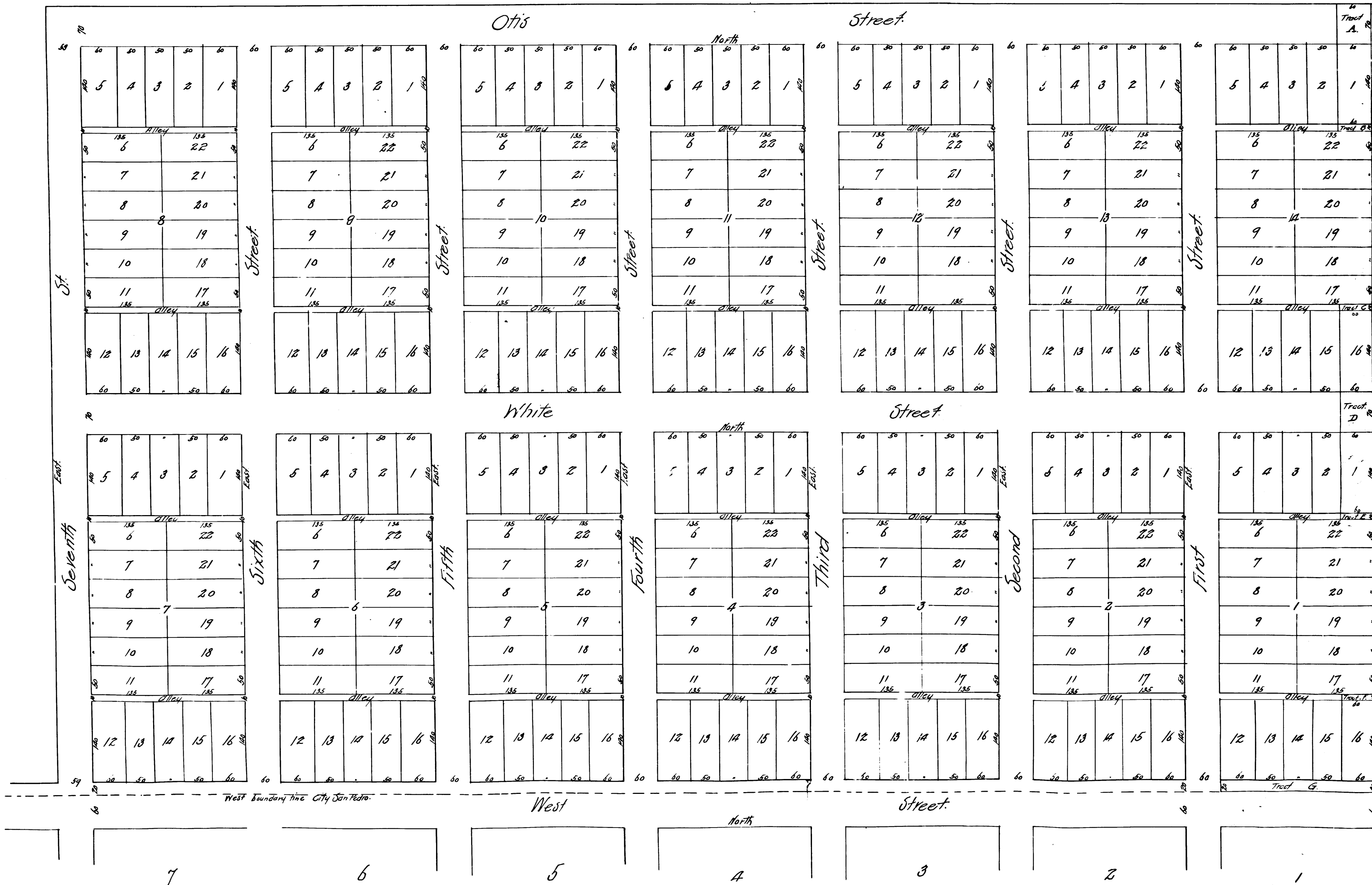
R.F. 159

Subdivision of the ESPERANZA TRACT

being a part of lot "2" of lot "M" of the partition
of part of the Rancho Los Palos Verdes.

Surveyed by C. J. Goucher
March 1897.

Scale - 100ft to one inch.
→ 11



Filed at reg. T. J. Goucher
Apr. 18 1897