

R.F. 160  
 A1 OF A2

I, Alfred P. Griffith, Secretary of the Azusa Irrigation Co., do hereby certify this Map to be the Right of Way, adapted by said Corporation June 30<sup>th</sup> 1894 showing the Right of Way located by said Corporation previous to said date for its irrigating works and pipe line, as referred to in a Deed from Mrs. M.C. Gathon et al to the Azusa Irrigating Company, filed for record February 13<sup>th</sup> 1895.

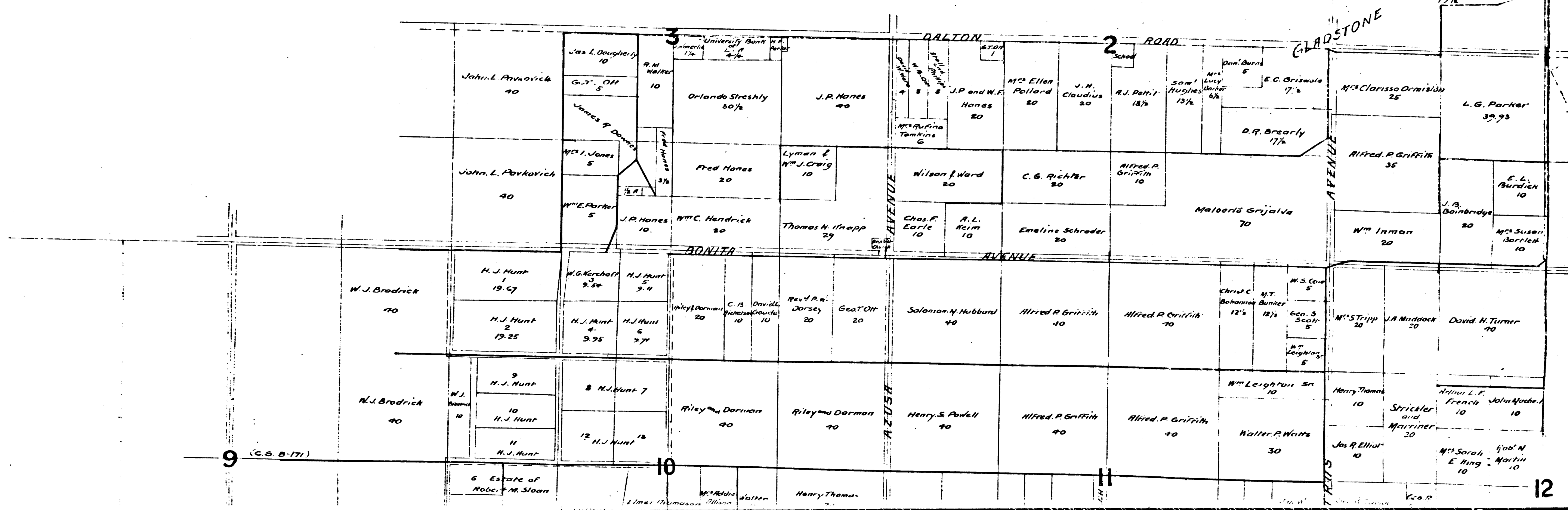
Alfred P. Griffith  
 Secretary Azusa Irrigating Co.

Filed Feb 13<sup>th</sup> 1895, at request of T.F. and T.C., at 4.5 P.M.

Cold Storage

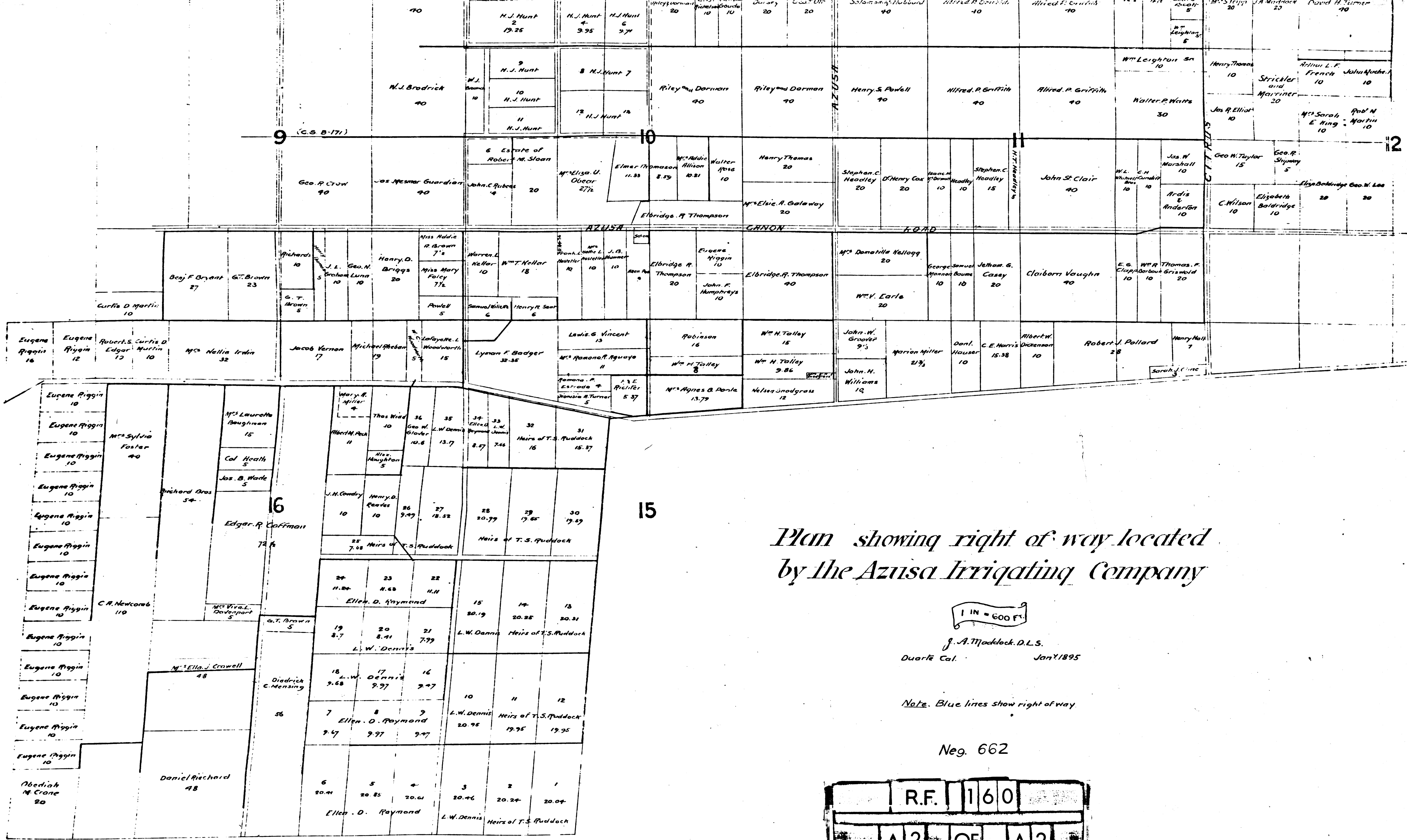
San Bernardino Base Line

N.W. Corner Sec. 1  
 T.1.S. R.10.W. S.B.M.



9 (C.S. B-171)

12



Plan showing right of way located by the Azusa Irrigating Company

1 IN = 600 FT.

J. A. Maddock, D.L.S.  
 Duarte Cal. Jan'y 1895

Note. Blue lines show right of way.

Neg. 662

