

# SUPPLEMENTAL MAP OF SPADRA CEMETERY

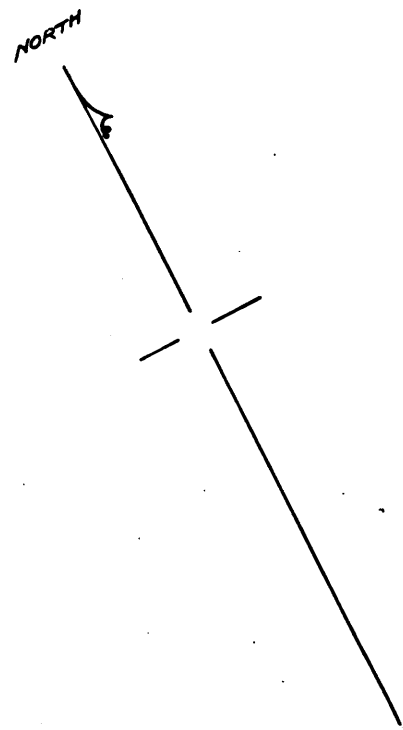
Spadra, Calif.  
Scale 20 feet to 1 inch.  
Feb. 15, 1898.

N.H. Sanders C.E.  
C.H. Sanders, Del.

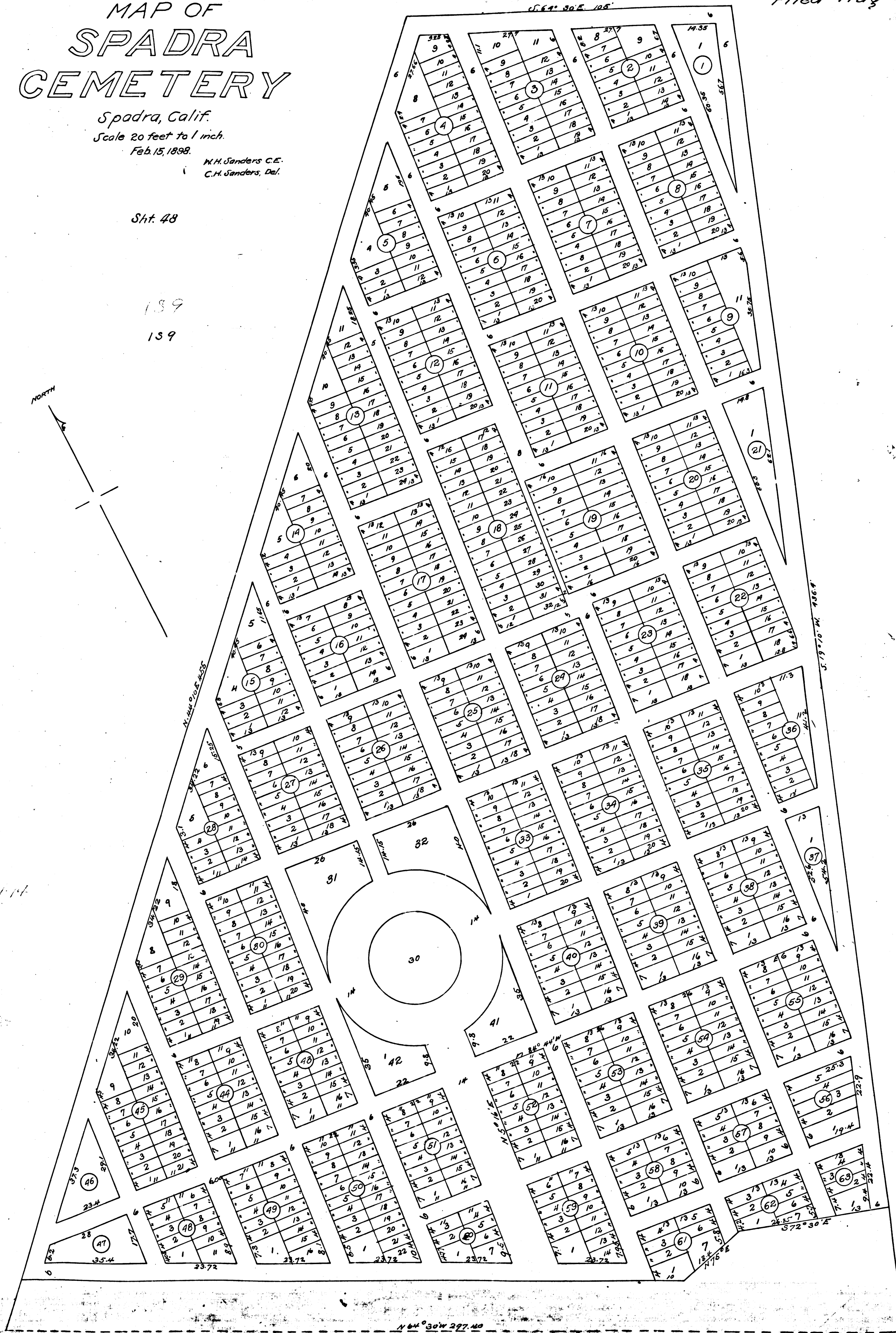
Sh. 48

139

139



R.F. 1169



Filed Aug. 1st 1900

N 64° 30' W 297.40