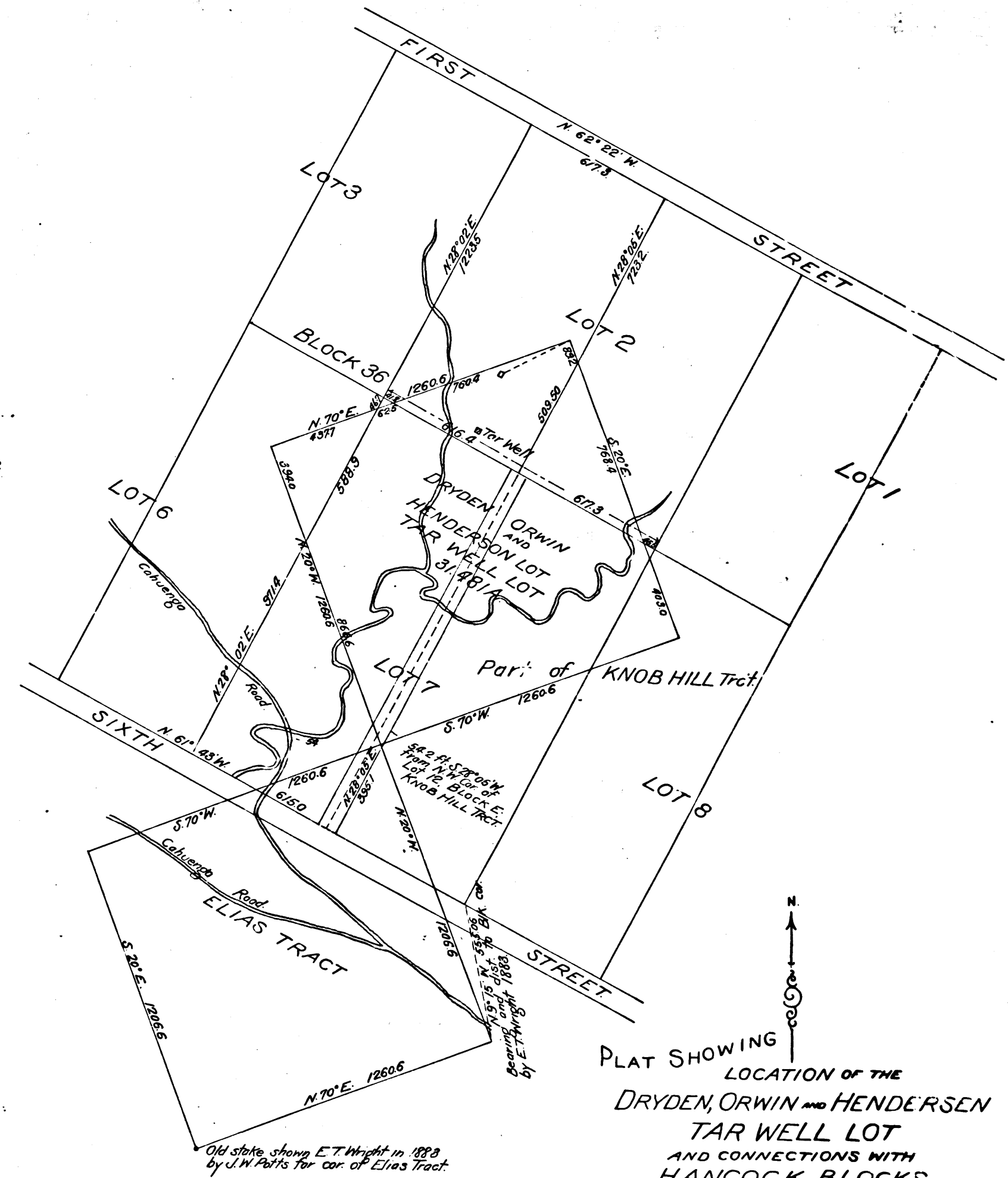
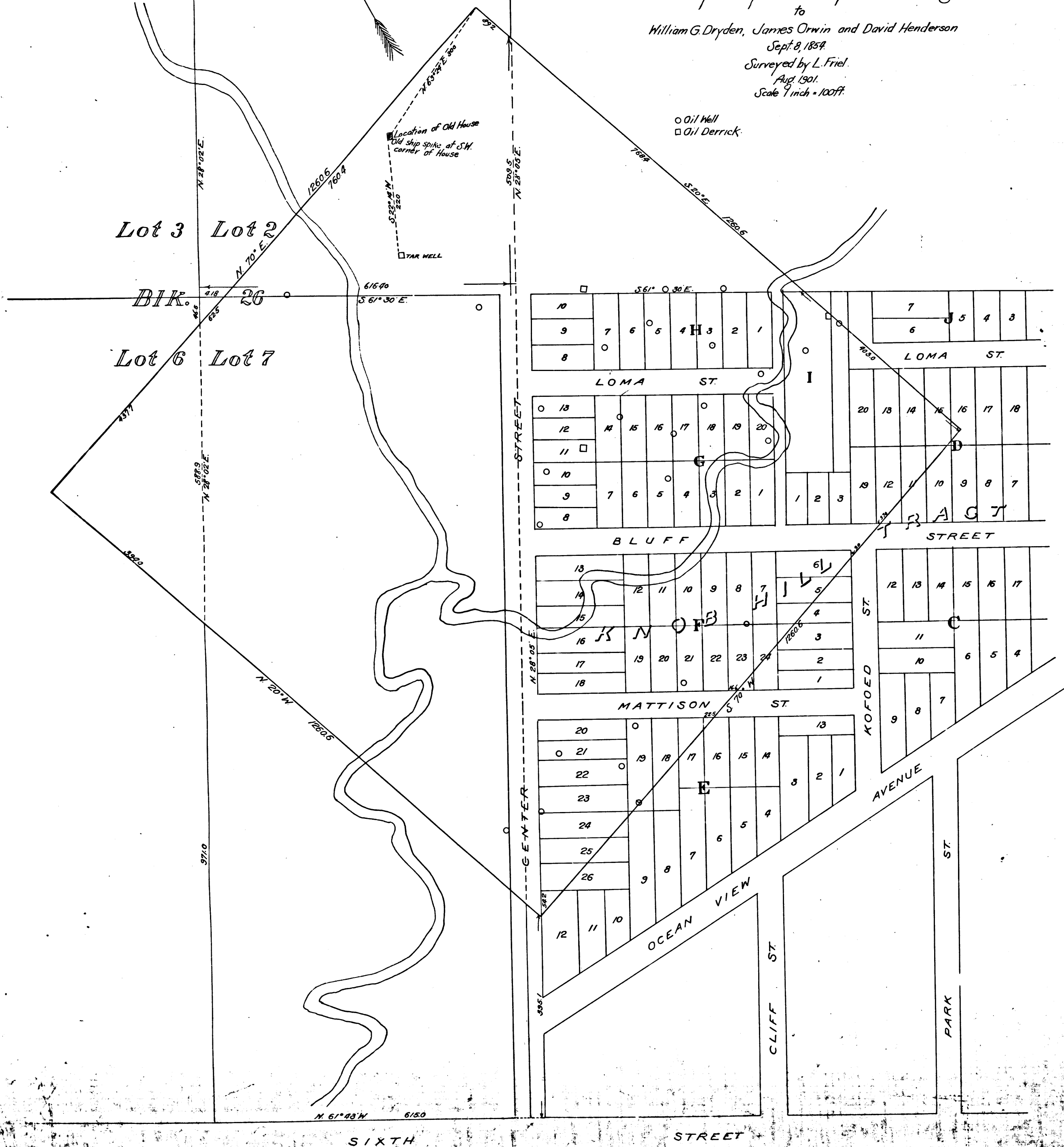


MAP
of the location of
The Tar Well Lot
Granted by Mayor & City of Los Angeles

to
William G. Dryden, James Orwin and David Henderson
Sept. 8, 1854
Surveyed by L. Friel
Aug. 1901.
Scale 1 inch = 100 ft.



PLAT SHOWING
LOCATION OF THE
DRYDEN, ORWIN AND HENDERSON
TAR WELL LOT
AND CONNECTIONS WITH
HANCOCK BLOCKS
and the
ELIAS TRACT
LOS ANGELES CO. CAL.
Surveyed Aug. 1901
by L. FRIEL.

Scale 300'-1"

Filed Aug 23, 1901.

R.F. 189

Filed Aug 23, 1901

