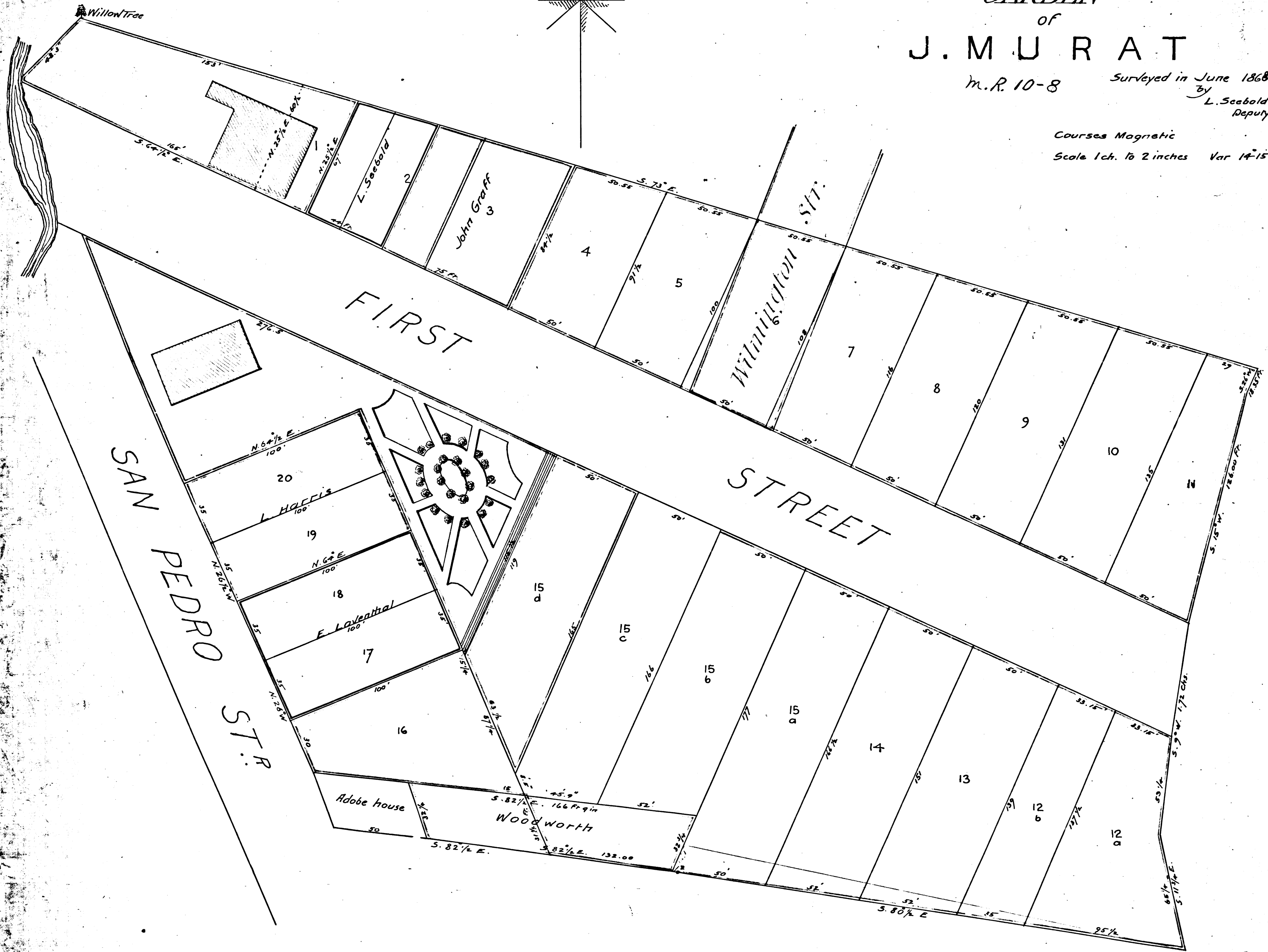


SUBDIVISION
OF THE
GARDEN
OF
J. MURAT

M.R. 10-8 Surveyed in June 1868
by
L. Seabold
Deputy County Sur.

Courses Magnetic
Scale 1 ch. to 2 inches Var 14° 15' E.



R.F. 192

Recorded Miscellaneous Record
on page 616 at request of
Joseph Murat
No 13 Div A
Recorders Office