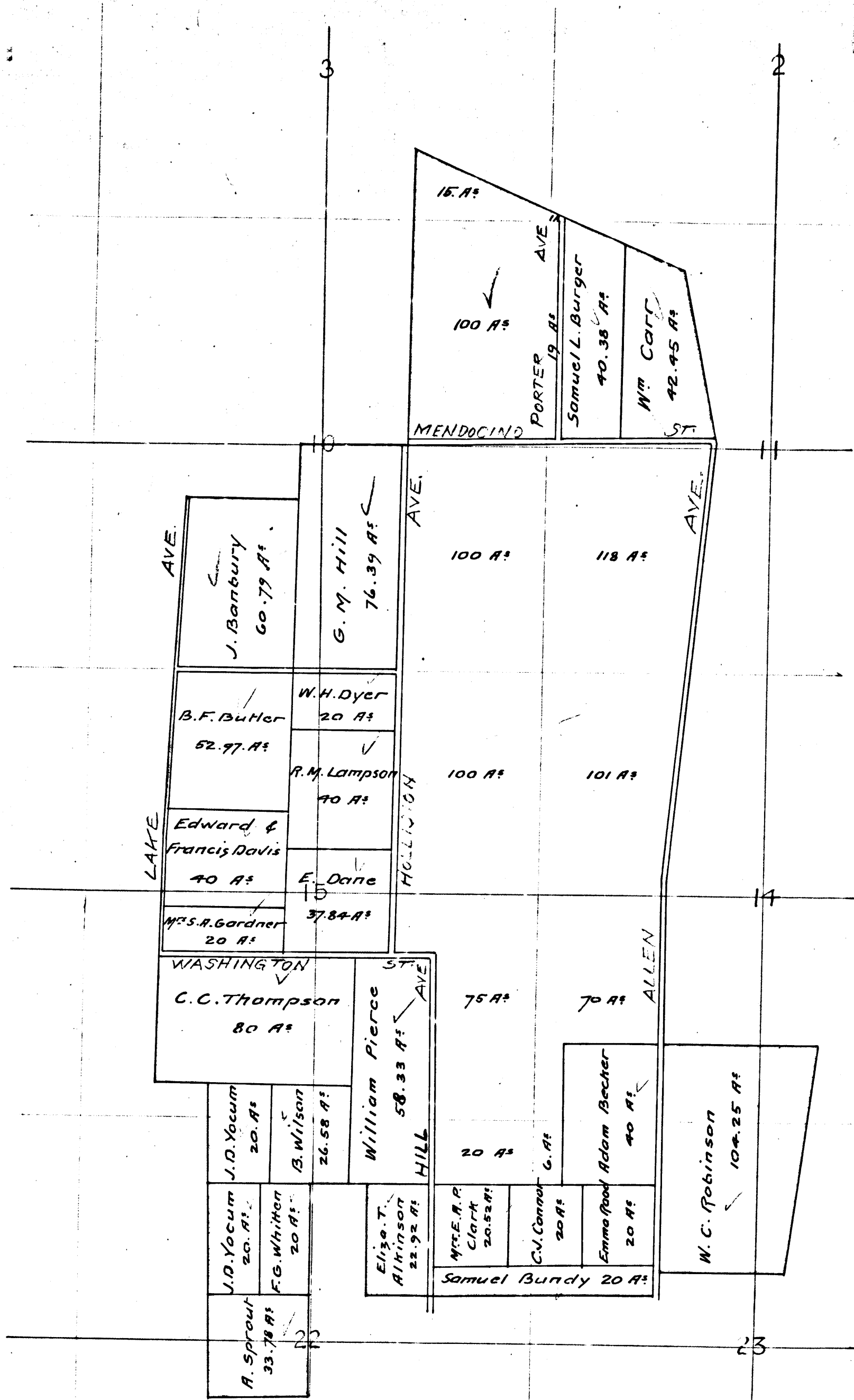


R 12 W



N

R.F. 193

Notice the above Map shows that portion of the "Craig" Tract purchased by A.B. Grogan excepting portions sold by said A.B. Grogan prior to March 6<sup>th</sup> 1882

The Section Lines are drawn upon the Maps nearly as possible from such data as I have the quantities on each subdivision are estimated for assessments purposes, they may not be strictly correct but the sum total represents 725 Acres. which is equal to the total amount of Land owned by said A.B. Grogan after deducting the County Road there from

E.T. Wright  
County Surveyor  
Los Angeles County Cal.

Scale 20 chains to one inch

For University Drive see D. 62-160 to 162, incl.

MAP OF CRAIG TRACT.

Filed at the request of Ed. T. Wright June 10<sup>th</sup> 1882 at 1.24 P.M

~~N.S. 1777~~  
N.S. 1777  
N.S. Div. A  
Recorders Office

INDEX 88

44