

MAP OF THE MISSION SAN GABRIEL

IN THE COUNTY OF LOS ANGELES, CALIFORNIA.

— showing —

the irregular Tracts of cultivated Land within Section 11 ~ T.1S.- R.12W. S.B.B & M.

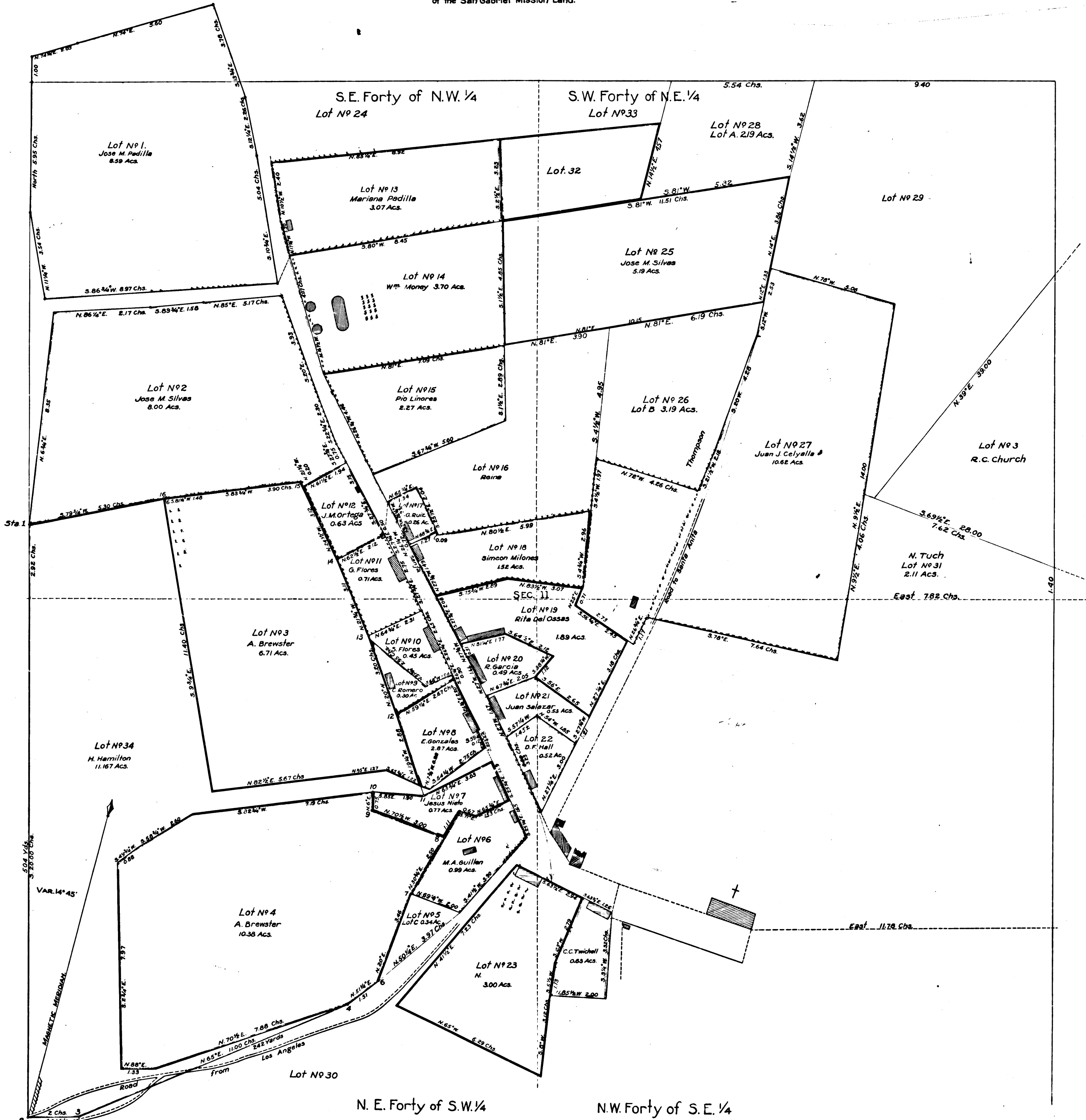
D.M. 73-470-471

Variation 14° 45' East

Scale 2.00 Chs. to 1 inch.

Surveyed in May 1870 by H. M. Johnston.

Surveyed and platted by H. M. Johnston May 1870.
Areas computed by J. M. Baldwin.
The red lines and areas of Lots marked A, B, & C
are calculated according to Traverse Tables,
Oct. 26, 1870 by H. M. Johnston.
Lot 3 is laid down from the final Government Survey
of the San Gabriel Mission Land.



R.F. 1199

Filed at the request of
E. H. Jones July 9, 1880
at 12:50 P.M.
No 2 Div. A.
RECORDERS OFFICE