

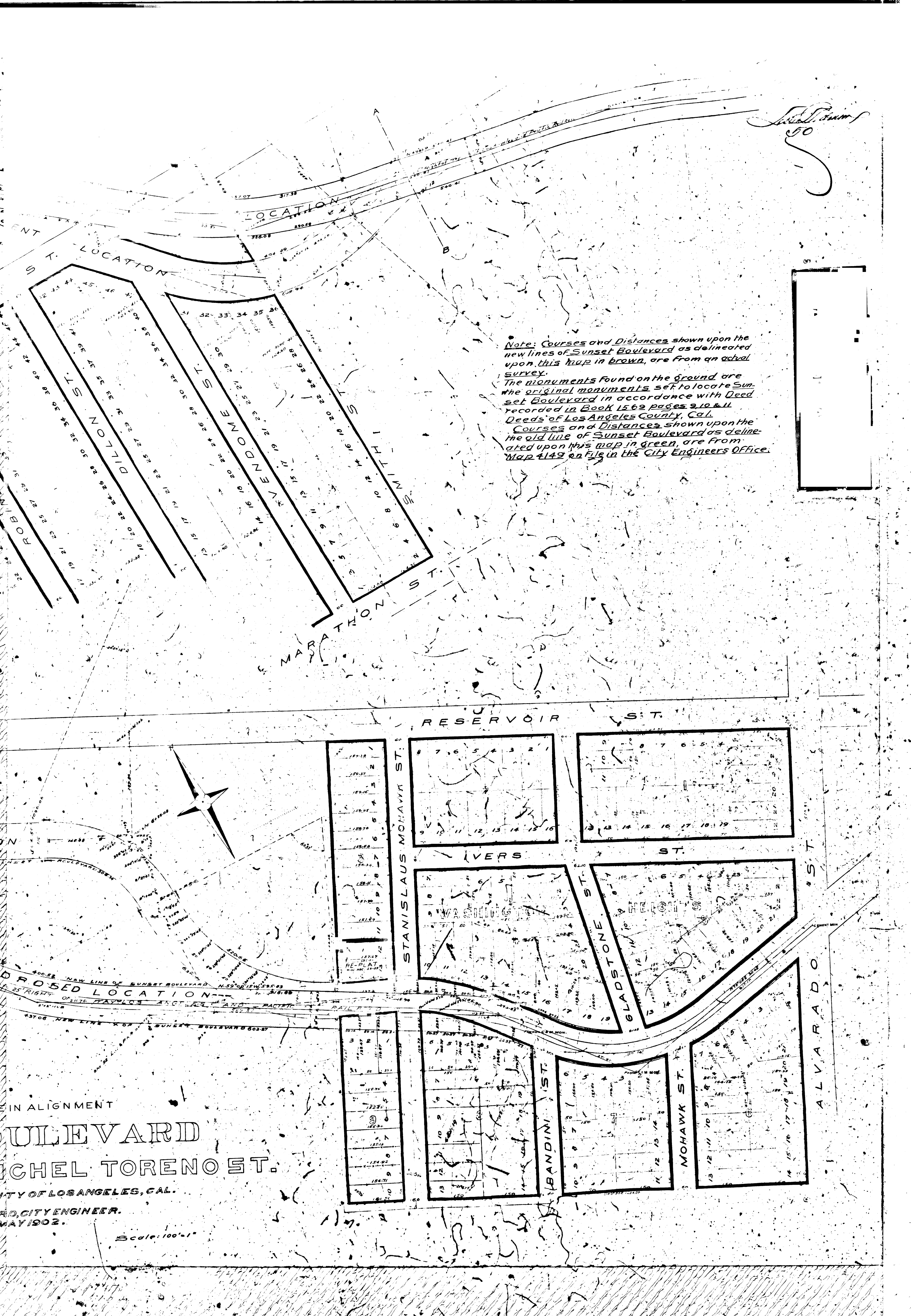
MAP  
 SHOWING PROPOSED CHANGE IN ALIGNMENT  
 OF  
**SUNSET BOULEVARD**  
 BETWEEN  
**ALVARADO ST. AND MICHEL TORENO ST.**  
 CITY OF LOS ANGELES, CAL.

HARRY A. STAFFORD, CITY ENGINEER.  
 MAY 1902.

Scale: 100' = 1"

*Suburban*  
50

Note: Courses and Distances shown upon the new lines of Sunset Boulevard as delineated upon this map in brown, are from an actual survey. The monuments found on the ground are the original monuments set to locate Sunset Boulevard in accordance with Deed recorded in Book 1569 pages 9, 10 & 11 Deeds of Los Angeles County, Cal. Courses and Distances shown upon the old line of Sunset Boulevard as delineated upon this map in green, are from Map 4149 on file in the City Engineers Office.



IN ALIGNMENT  
**SUNSET BOULEVARD**  
MICHEL TORENO ST.  
CITY OF LOS ANGELES, CAL.  
CITY ENGINEER.  
MAY 1902.

Scale: 100'-1"