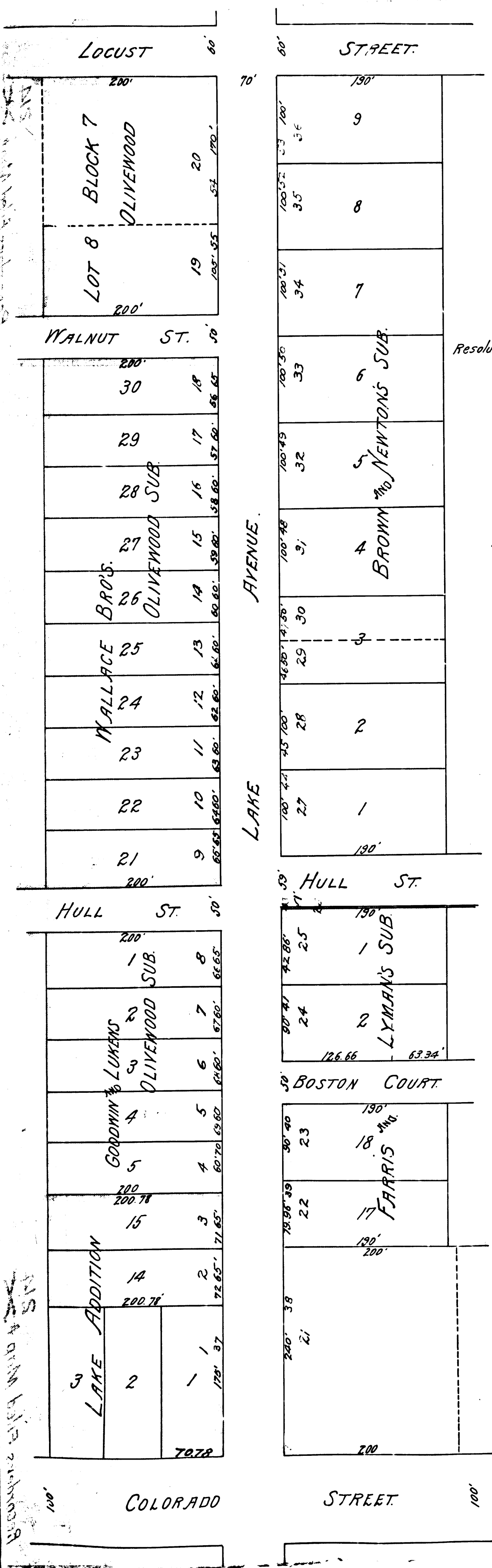


R.F. 214



filed June 3, 1904.

DIAGRAM

Showing the assessment district and the land to be taken for the widening of Lake Avenue in the City of Pasadena-Calif. from Colorado Street to Locust Street; also showing the lands assessed and the relative location of each district, block, lot or portion of lot and their dimensions.

Each block, lot or portion of lot taken or assessed is designated and described by the number marked thereon in red ink.

Hereon the mark ' means feet. Figures in black ink next to property lines show each the length of said lines in feet, other figures in black ink show the numbers of the lots and blocks. Solid black lines show original lot lines, broken black lines show subdivisions of original lots, green lines show the land to be taken for the widening of said Avenue, blue, yellow and brown tinting shows boundaries of subdivisions named and pink tinting shows boundaries of the assessment district. The diagram is drawn to a scale of 100 feet to one inch.

T. D. Allin
City Engineer.

Pasadena - Calif.
March 1904

State of California,
County of Los Angeles, } S.S.
City of Pasadena, }

I, Heman Dyer, Clerk of the City of Pasadena, do hereby certify that the foregoing plat is a full, true and correct copy of the plat of the Commissioners on the following public work, to-wit:

That Lake Avenue in the City of Pasadena, be widened on each side from the north line of Colorado Street to the south line of Locust Street, as set forth in Resolution of Intention No. 1547.

Said plat was confirmed and adopted at a regular meeting of the City Council of the City of Pasadena, held May 31st, 1904, by motion unanimously carried.

In testimony whereof I have hereunto set my hand and affixed the corporate seal of the City of Pasadena, this 31st day of May, 1904.

Heman Dyer,
Clerk of the City of Pasadena.

By B. Gregory,
Deputy

See D. 6-202
" " " 207
" " " 204
" " " 205.

Index #3