

MAP
OF

A RE SUBDIVISION OF BLOCK BOUNDED BY

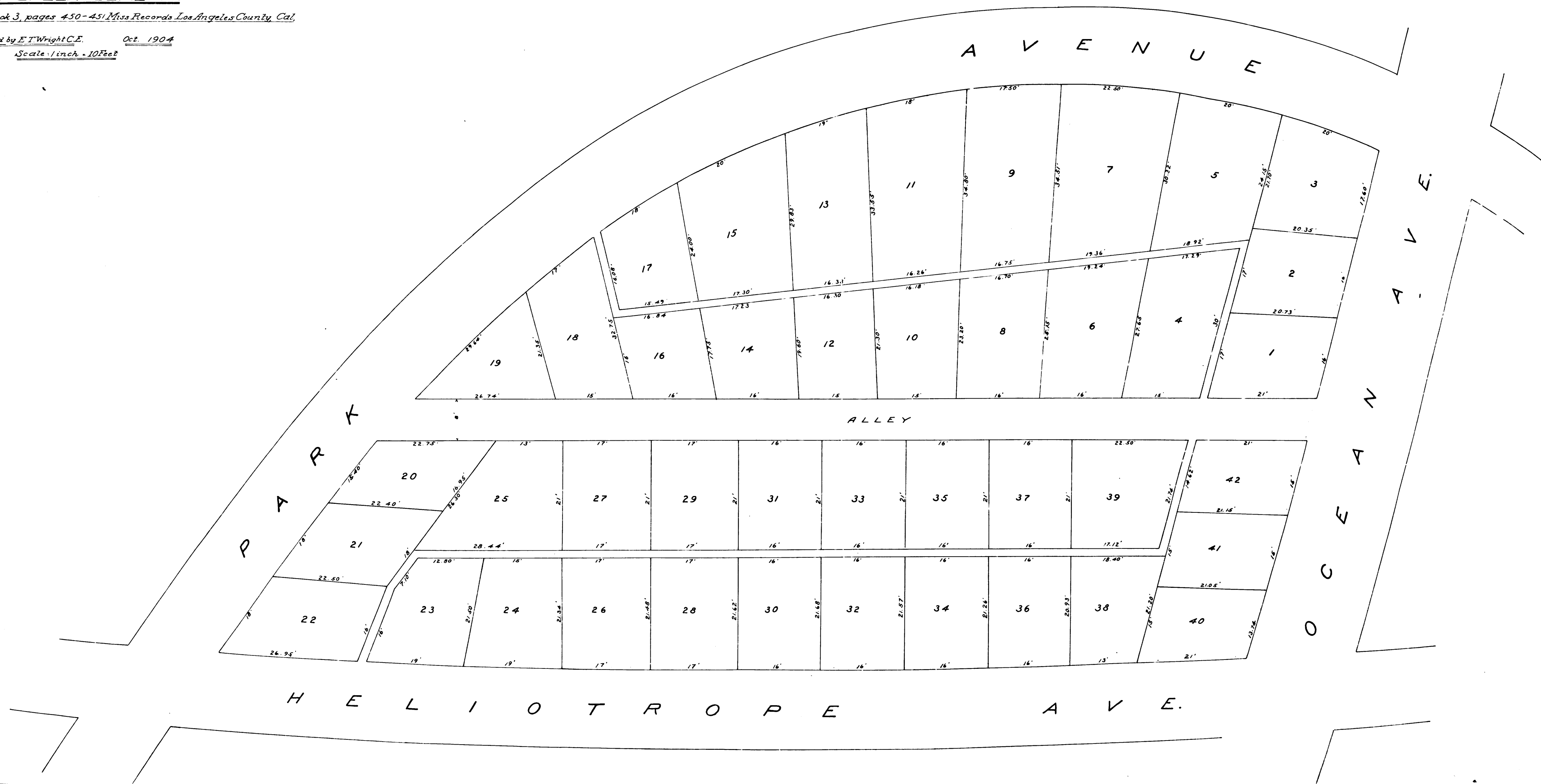
PARK, OCEAN AND HELIOTROPE AVENUES INCLUDING LOTS 4638 TO 4686

EVERGREEN CEMETRY

As per Map recorded in Book 3, pages 450-451 Miss Records Los Angeles County, Cal.

Surveyed by E. T. Wright C.E. Oct. 1904

Scale 1/4 inch = 10 Feet



R.F. 215