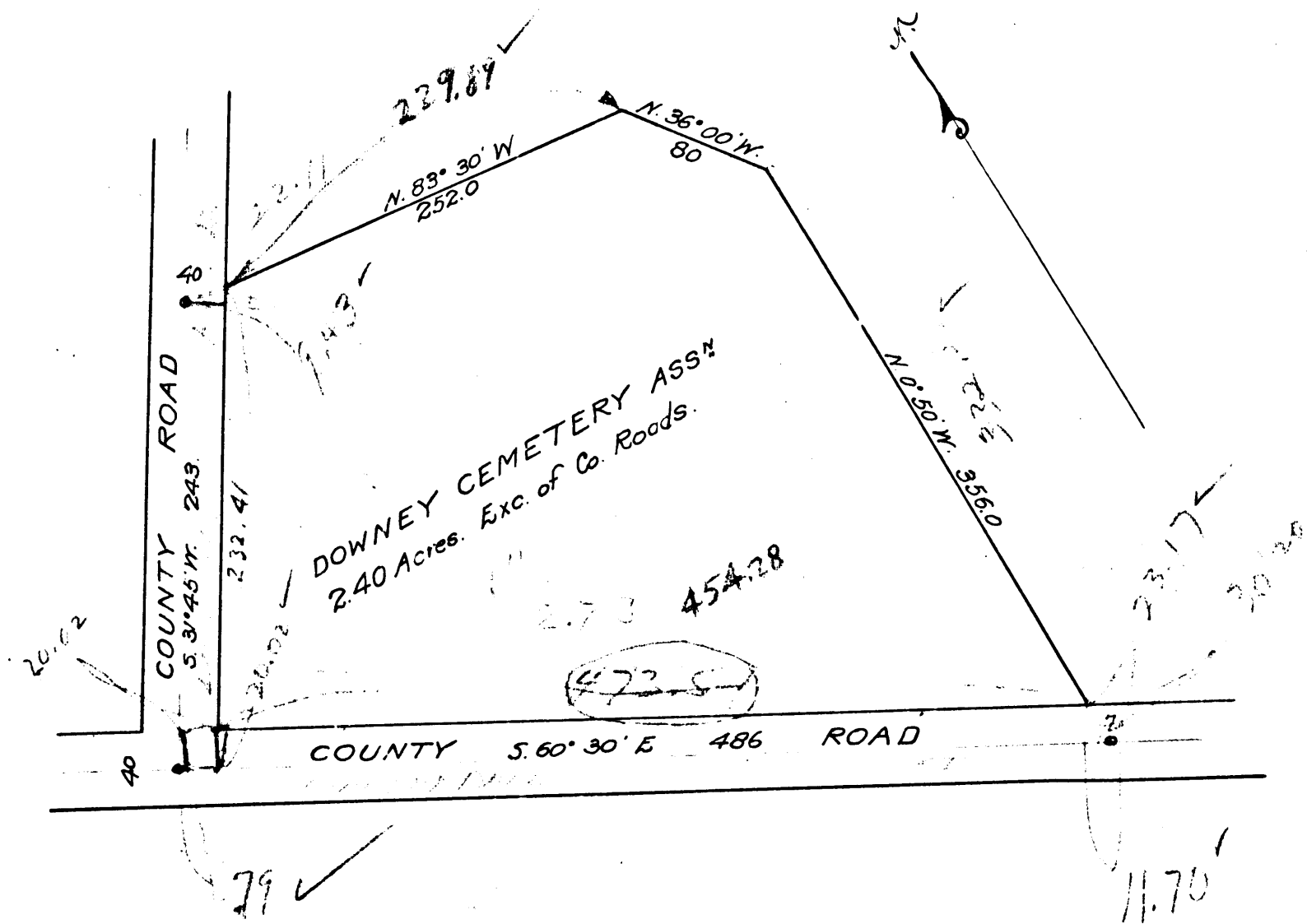


Plot of
 DOWNEY CEMETERY
 — IN —
 Sec. 16 T. 3. S. R. 12. W.
 Santa Gertrudes Ro.
 Surveyed July 13th 1904 by J.A. Worthen C.E.
 Scale 100' = 1 inch.
 See C. S. 3263 1/2



R.F.
 2119

Filed Feb. 14, 1905

Curtin & Bacon Rd. (road on south of tract) changed to Gardendale St. D: 49-132.

7119