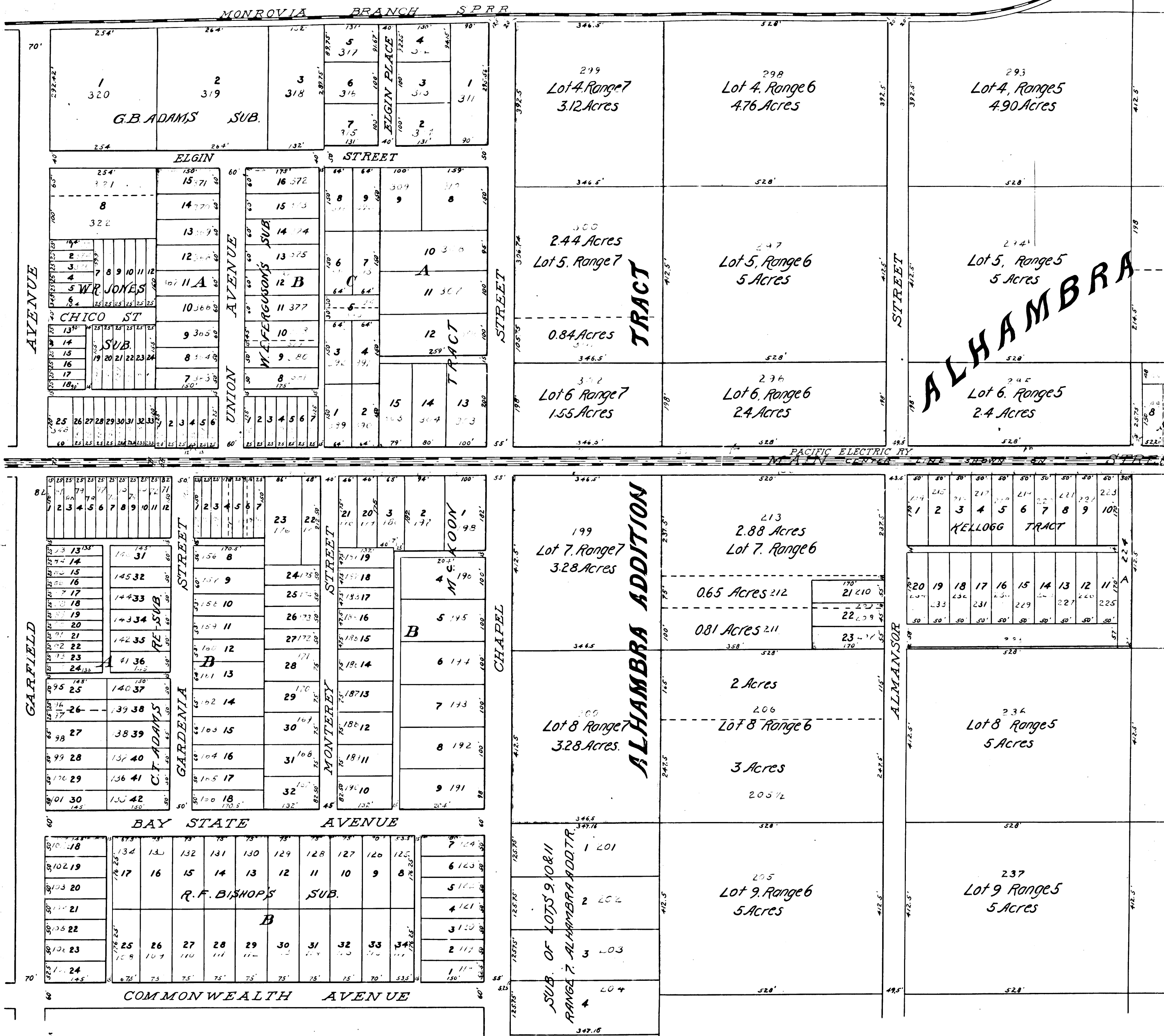


Alhambra, California
October 1904

For map showing details

Showing the assessment district and the Gardenia Street or side of northerly to the easterly boundary line of parcel of land and their dimensions.
Each district block, lot, portion of lot or parcel, hereon, the mark "K" means feet, figures in solid black lines show original lot lines, broken black lines show subdivisions of original lots, show the boundaries of subdivisions named. The diagram



A 11
 OF
 A 2
 R.F.
 221

I hereby certify that this plat was confirmed and adopted by the Board of Trustees of the City of Alhambra.

Filed Jun. 24th 1905

map showing deeds for widening See C.S. 7558

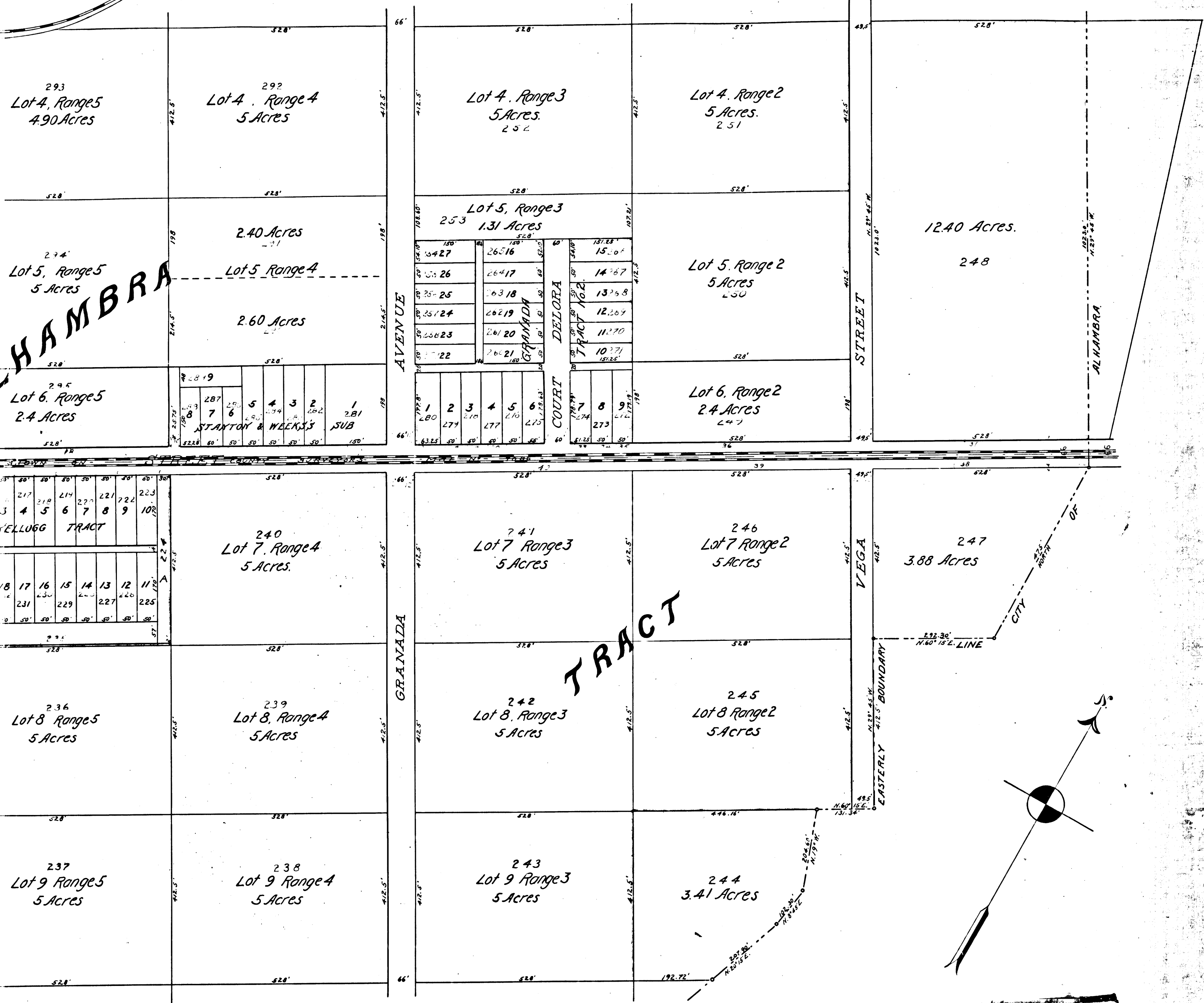
DIAGRAM

Showing the assessment district and the land to be taken for the widening of Main Street in the City of Alhambra, California. From the easterly line of the city of Alhambra to the easterly boundary line of said City, also showing the lands assessed and the relative location of each district block, lot, portion of lot or other subdivisions.

Each district block, lot, portion of lot or parcel of land taken or assessed is designated and described by the number marked thereon in red ink. Hereon the word "means" means feet. Figures in blue ink next to the property lines show each the length of said lines in feet. Other figures in black ink show the numbers of the lots.

Original lot lines, broken black lines show subdivisions of original lots. Orange lines show the land to be taken for the widening of said Street, orange hatching shows boundaries of the assessment district, and other hatching subdivisions named.

The diagram is drawn to a scale of 150 feet to one inch.



Adopted by the Board of Trustees of the City of Alhambra, California, in and by its resolution N° 98 this 13th day of December 1904
 A. A. Colappp, City Clerk.

T.D. Allin, City Engineer

Filed Jun. 24th 1905

R.F. 221
 A21 OF A2