

R.F. 223
A1 OF A2

MAP OF THE
ASSESSMENT DISTRICT
AND THE LAND TO BE TAKEN FOR THE PURPOSE OF
WIDENING - OPENING AND EXTENDING
MISSION STREET

FROM PALERMO AVENUE TO HOME AVENUE, SOUTH PASADENA, CAL.

This map shows the relative location of each district, block, lot, portion or parcel of land assessed together with its dimensions. Each block, lot, or portion of lot taken or assessed is designated and described by the number marked thereon in blue ink.

Hereon continuous black lines show original lot lines. Dotted black lines show subdivisions of the original lots. Red lines show the boundaries of the lands to be taken for widening, opening & extending Mission Street from Palermo Avenue to Home Avenue. Green lines show the boundaries of the assessment district. Figures in black ink next to lot lines show the lengths of said lines. Other figures in black ink show the numbers of the lots and blocks. Figures in red ink show the dimensions of the lands to be taken. Figures in green ink show the dimensions of the assessment district. Blue figures under 100 apply to designate those parts taken. Blue figures over 100 designate those parts assessed. Tintings show the boundaries of the subdivisions, additions and tracts named.

The SCALE of the MAP is ONE INCH = 100 FEET

September 1, 1904
J. R. Postle City Engineer

This plat of the assessment district and the lands to be taken for widening, opening and extending Mission Street South Pasadena, Cal. is the one adopted by us to accompany our report to the Board of Trustees of South Pasadena and this plat is hereby made a part of our official report.

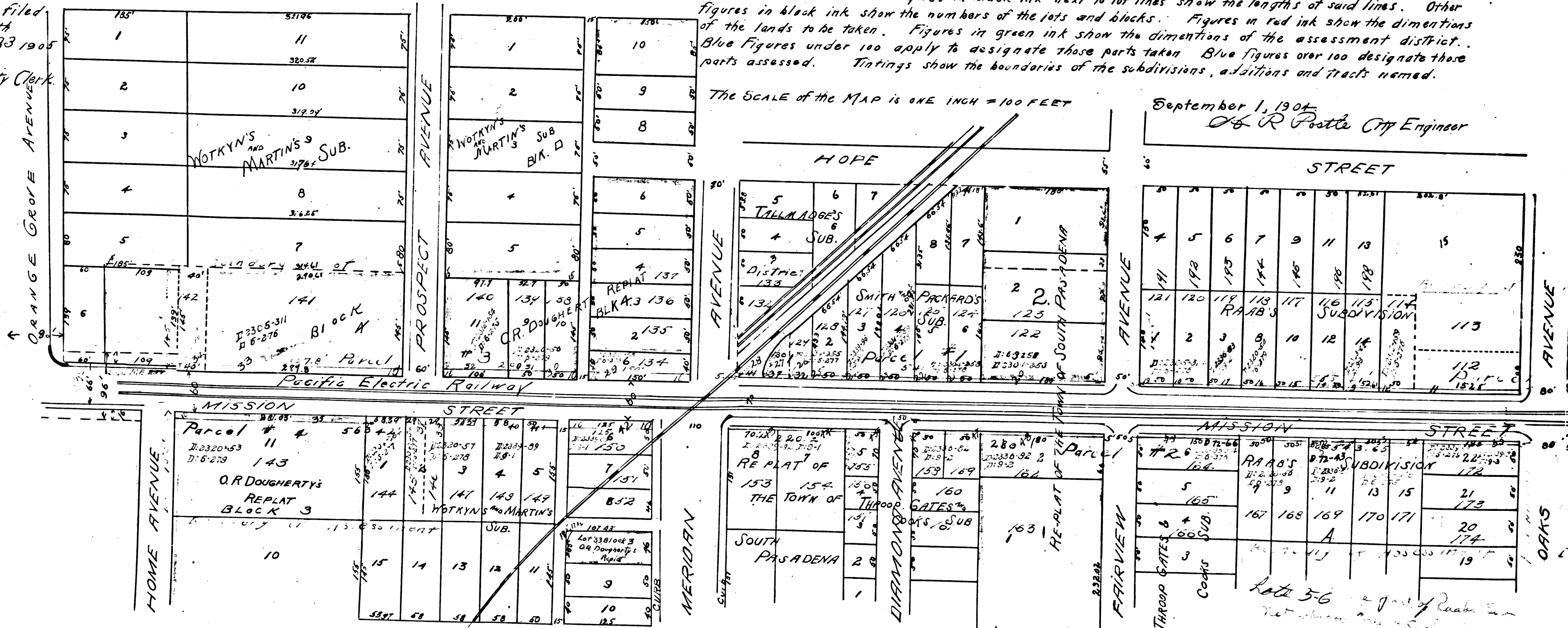
Georn Melem
E. E. Baden
Calvin B. Gray

Commissioners duly appointed by the Trustees Aug. 15 & 29, 1904 for the widening, opening & extending of Mission Street

INDEX #8

Approved by the Board of Trustees of South Pasadena, Cal. and filed with the City Clerk of South Pasadena, Cal. January 23, 1905
Alexis H. Buckley City Clerk

Filed Mar 29, 1905
#223



lots 5-6
See MR 17-63

R.F. 223
A2 OF A2

MAP OF THE
ASSESSMENT DISTRICT
AND THE LAND TO BE TAKEN FOR THE PURPOSE OF
WIDENING - OPENING AND EXTENDING
MISSION STREET

FROM PALERMO AVENUE TO HOME AVENUE, SOUTH PASADENA, CAL.

This map shows the relative location of each district, block, lot, portion or parcel of land assessed together with its dimensions. Each block, lot, or portion of lot taken or assessed is designated and described by the number marked thereon in blue ink.
Hereon continuous black lines show original lot lines. Dotted black lines show subdivisions of the original lots. Red lines show the boundaries of the lands to be taken for widening, opening & extending Mission Street from Palermo Avenue to Home Avenue. Green lines show the boundaries of the assessment district. Figures in black ink next to lot lines show the lengths of said lines. Other figures in black ink show the numbers of the lots and blocks. Figures in red ink show the dimensions of the lands to be taken. Figures in green ink show the dimensions of the assessment district. Blue figures under 100 apply to designate those parts taken. Blue figures over 100 designate those parts assessed. Tintings show the boundaries of the subdivisions, additions and tracts named.

The SCALE of the MAP is ONE INCH = 100 FEET

September 1, 1904
C. R. Postle City Engineer

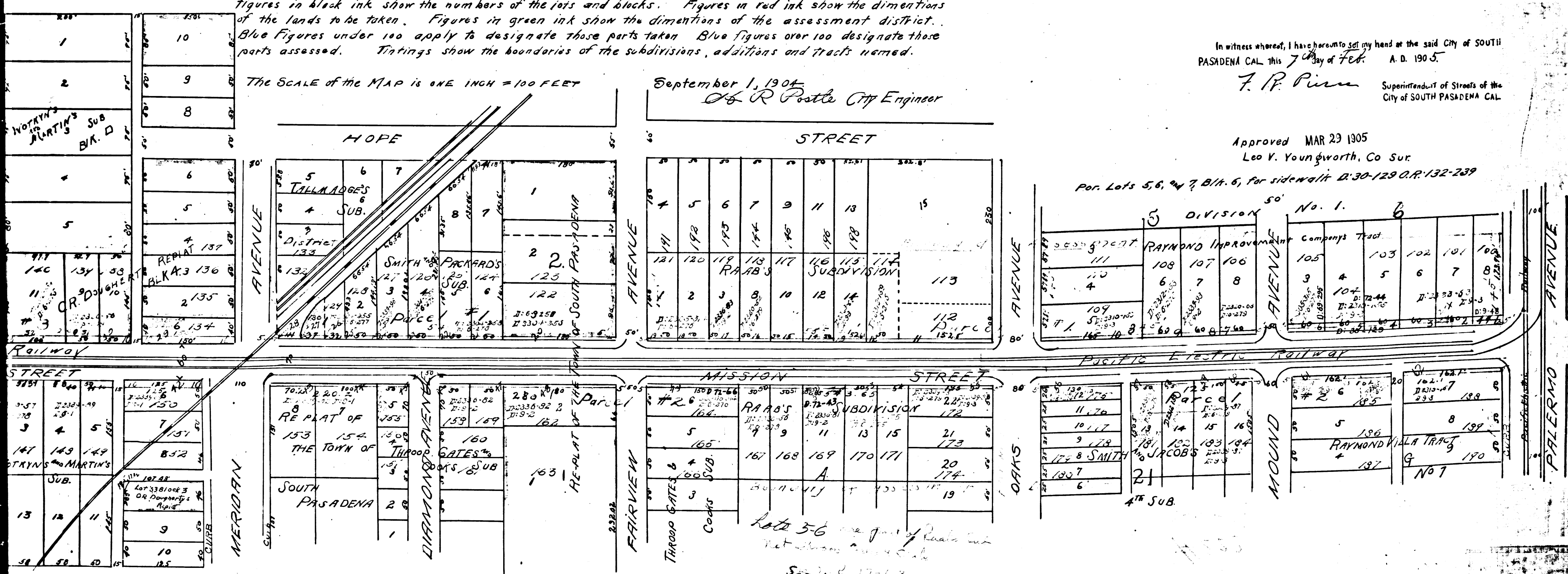
This plat finally confirmed and adopted by the Trustees of South Pasadena Cal. was delivered to Frank R. Pierce Street Superintendent of South Pasadena Cal. Feb 7, 1905
Alysis Hunkley, City Clerk
F. R. Pierce Street Superintendent

Recorded this 7th day of Feb. A. D. 1905.
F. R. Pierce Superintendent of Streets of the City of SOUTH PASADENA, CAL.

In witness whereof, I have hereunto set my hand at the said City of SOUTH PASADENA CAL. this 7th day of Feb. A. D. 1905.
F. R. Pierce Superintendent of Streets of the City of SOUTH PASADENA CAL.

Approved MAR 23 1905
Leo V. Youngworth, Co Sur

Per. Lots 5, 6, 7, B/A. 6, for sidewalk D. 30-129 O.R. 132-239



lots 5-6 are part of Replat of
see MR 17-63