

R.F. 2224

Index #8

MAP OF THE
ASSESSMENT DISTRICT
AND THE LAND TO BE TAKEN FOR THE PURPOSE OF
WIDENING - OPENING AND EXTENDING
ORANGE GROVE AVENUE

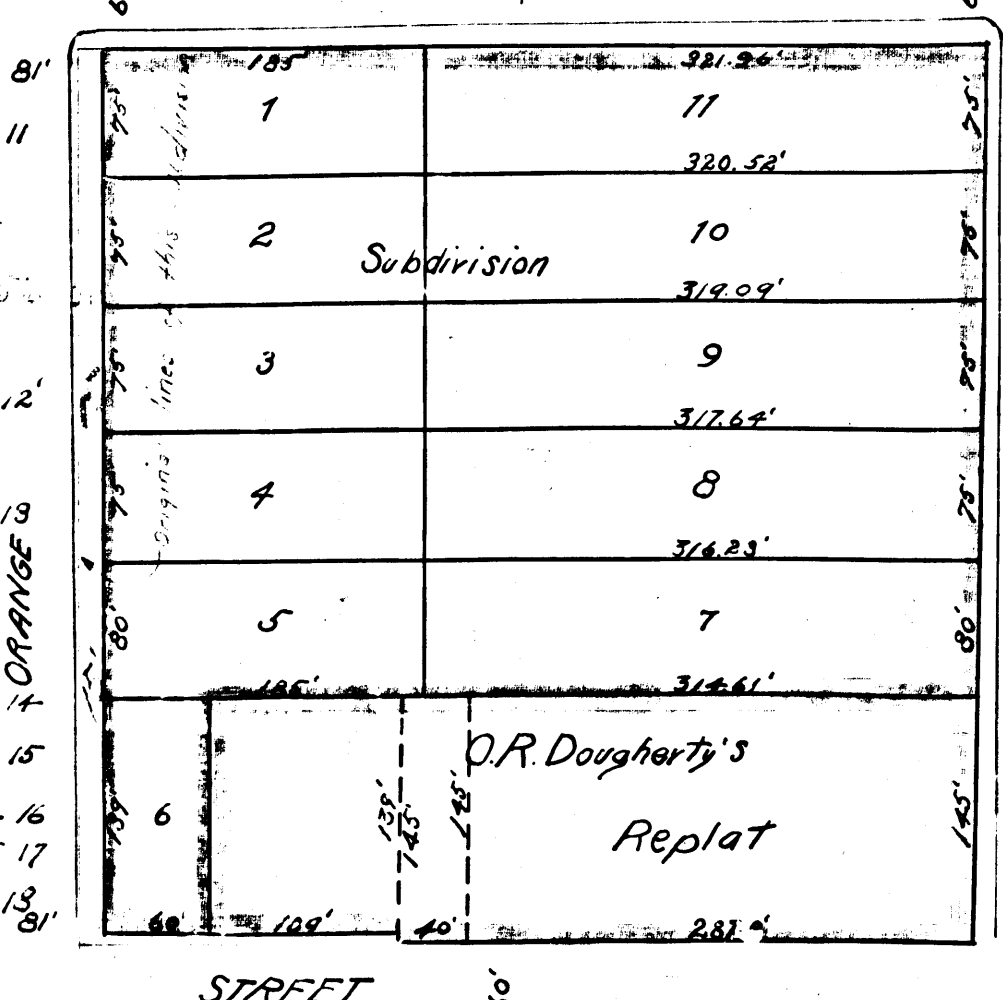
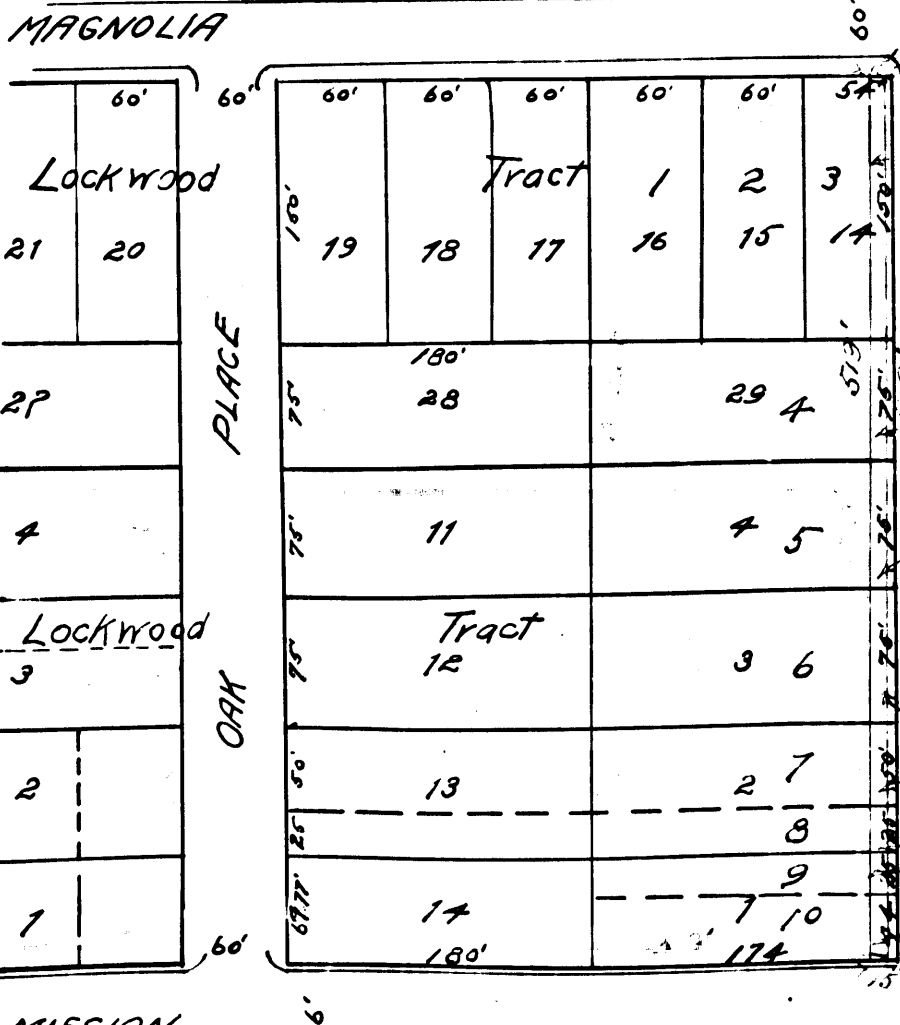
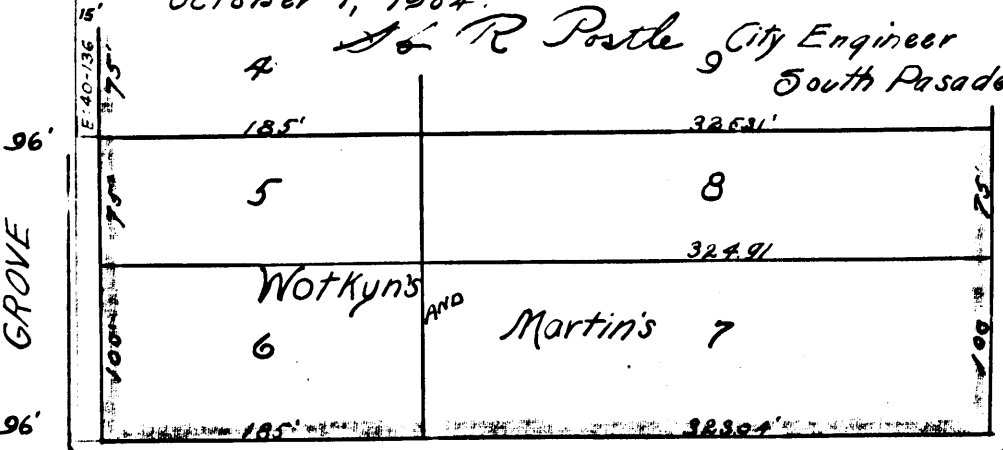
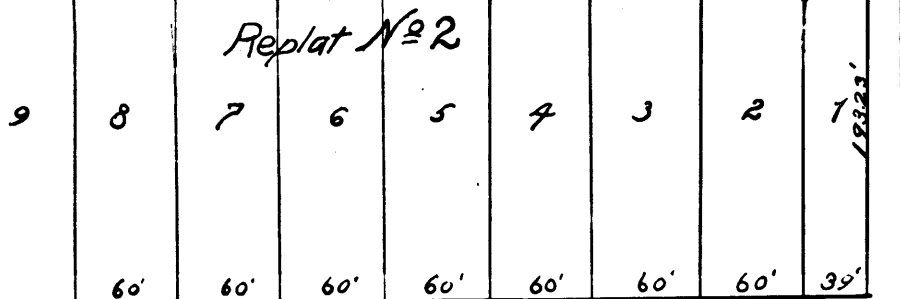
FROM THE NORTHERLY LINE OF MISSION STREET TO THE SOUTHERLY LINE OF MAGNOLIA STREET.

The map shows the relative location of each district, block, lot, portion or parcel of land assessed, together with its dimensions. Each block, lot or portion of lot taken or assessed is designated and described by the number marked hereon in blue ink. Hereon continuous black lines show original lot lines. Dotted black lines show subdivisions of the original lots. Red lines show the boundaries of the lands to be taken for widening, opening and extending of Orange Grove Avenue from the northerly line of Mission Street to the southerly line of Magnolia Street. Green lines show the boundaries of the assessment district. Figures in black ink next to lot lines show the lengths of said lines. Other figures in black ink show the numbers of the lots and blocks. Figures in red ink show the dimensions of the lands to be taken. Figures in green ink show the dimensions of the assessment district. Tintings show the boundaries of the subdivisions, additions and tracts named.

Field Apr. 1, 1905.

Approved April 1905
Leo K. Youngworth, Co. Sur.

The scale of the diagram is one inch = 100 feet.



This plat of the assessment district and the lands to be taken for widening, opening and extending Orange Grove Avenue, South Pasadena California is the one approved by us to accompany our report to the Board of Trustees of South Pasadena and this plat is hereby made a part of our official report.

Commissioners
Calvin B. J. T. G.
Leo Youngworth
Merton G. Keith

Com. appointed by the Trustees Aug. 18 & 29 1904 for the widening, opening & extending of Orange Grove Avenue.

Approved by the Board of Trustees of South Pasadena, California and filed with the City Clerk of South Pasadena California, Dec. 19 1904.
Alexis Hunsbly City Clerk.

This plat finally confirmed and adopted by the Trustees of South Pasadena, California was delivered to Frank R. Pierce, Street Superintendent of South Pasadena California February 8 1905
Alexis Hunsbly
F. R. Pierce
CITY CLERK.
STREET SUPERINTENDENT.