

Index #8

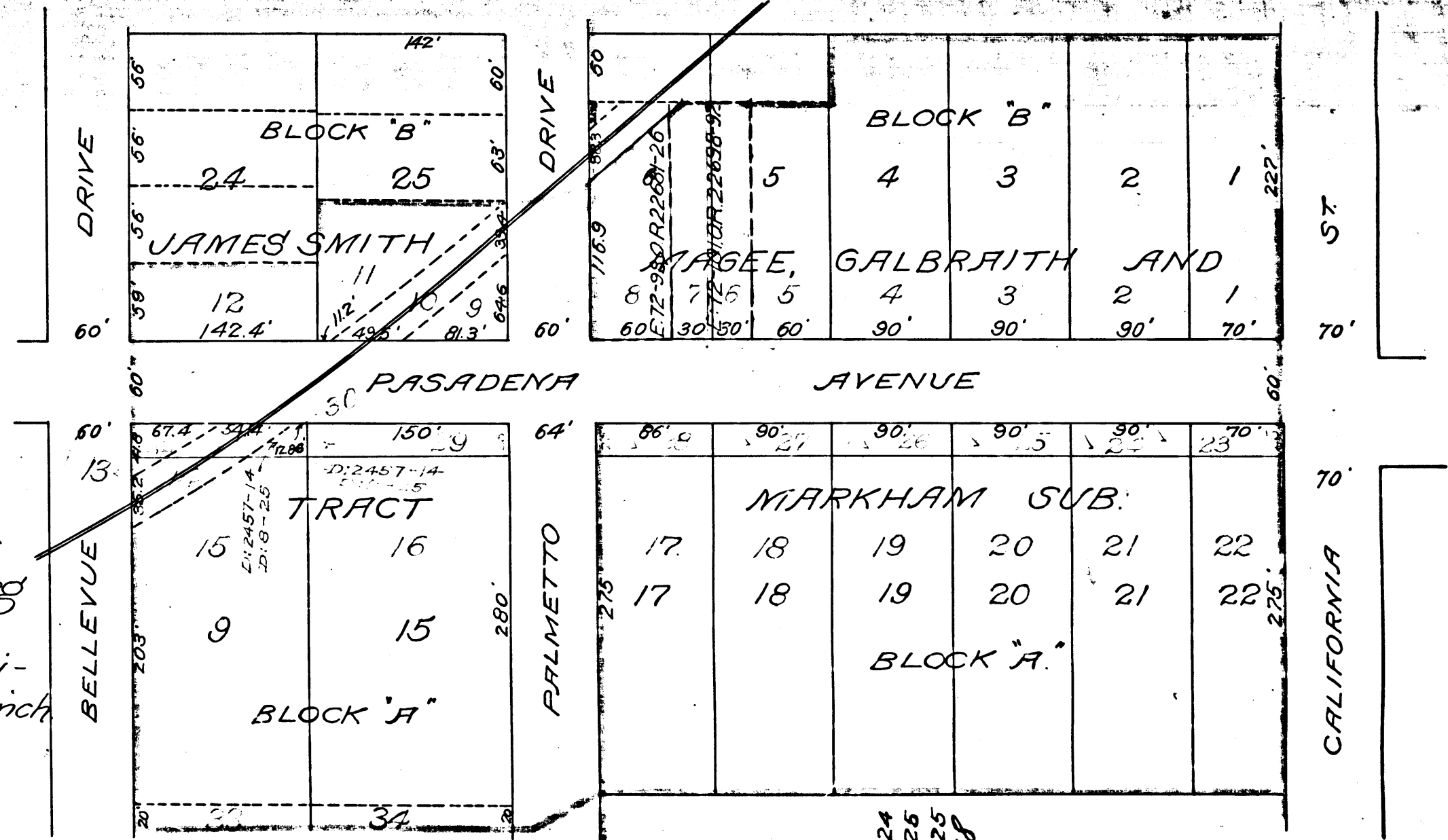
DIAGRAM

Showing the assessment district and the lands to be taken for the widening of Pasadena Avenue from the south line of Bellevue Drive to the north line of California Street, also showing the lands assessed and the relative location of each district, block, lot, portion of lot or parcel of land and their dimensions.

Each district, block, lot, portion of lot or parcel of land taken or assessed is designated and described by the number marked thereon in red ink.

Hereon the mark ' means feet, Figures in black ink next to property lines show each the length of said lines in feet. Other figures in black ink show the numbers of the lots. Solid black lines show original lot lines. Broken black lines show subdivisions of original lots. Green lines show land to be taken for the widening of said Pasadena Avenue. Green tinting shows boundary of the assessment district. Other tintings show boundaries of subdivisions named. The diagram is drawn to a scale of 100 feet to one inch.

T. D. Allin.
City Engineer.



No. 227.

Filed Jun. 21, 1905.

R.F. 227

Magee, Galbraith and Murkham Sub.
Street widening E. 25' of Lots 17 & 18 B.I.K.A. D: 8-24
E. 25' " 19 & 20 " " D: 8-26
E. 25' " 21 & 22 " " D: 8-26
For receding of said Pasadena Ave Ord 618
See D: 8-122