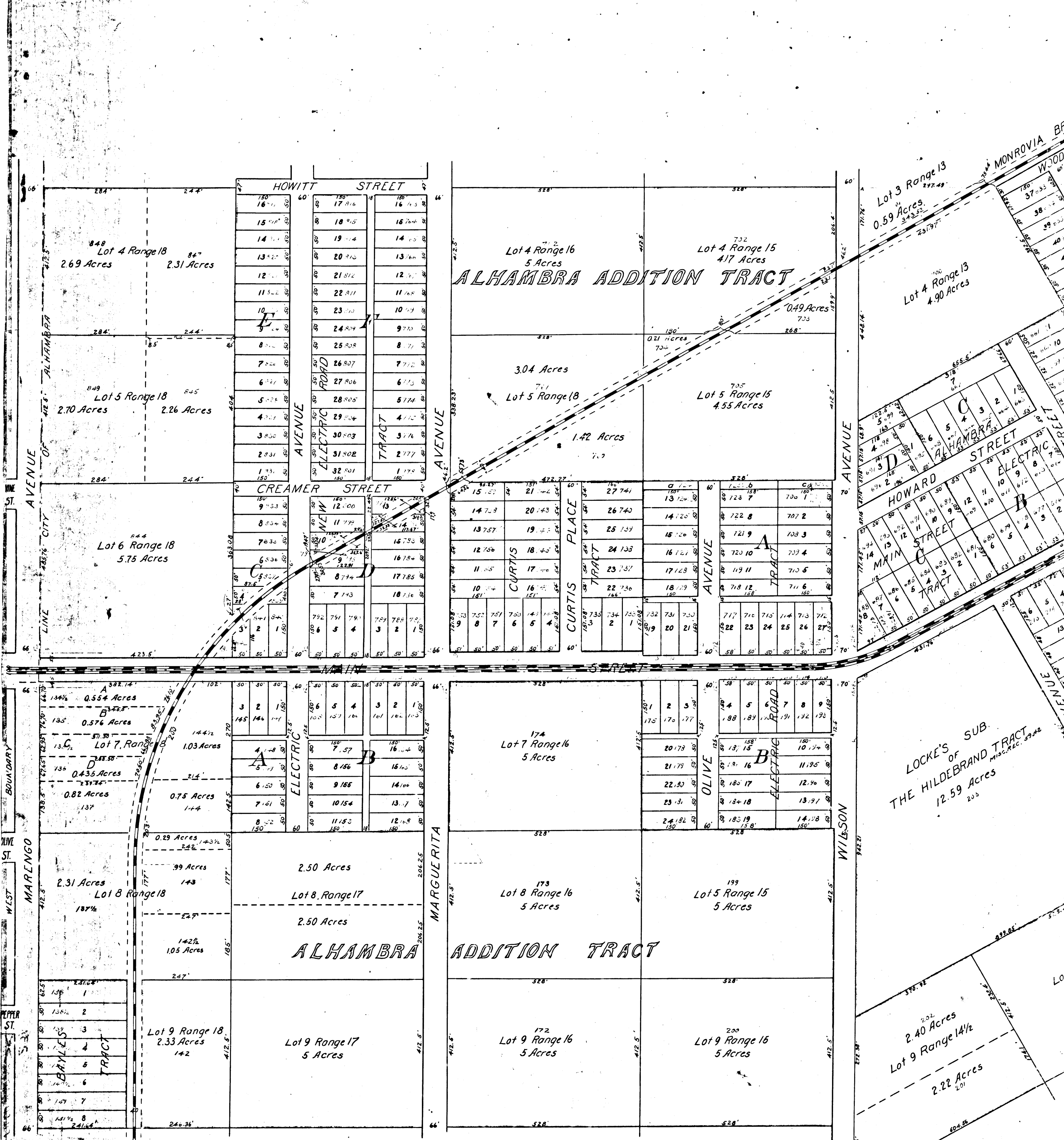


DIAGRAM

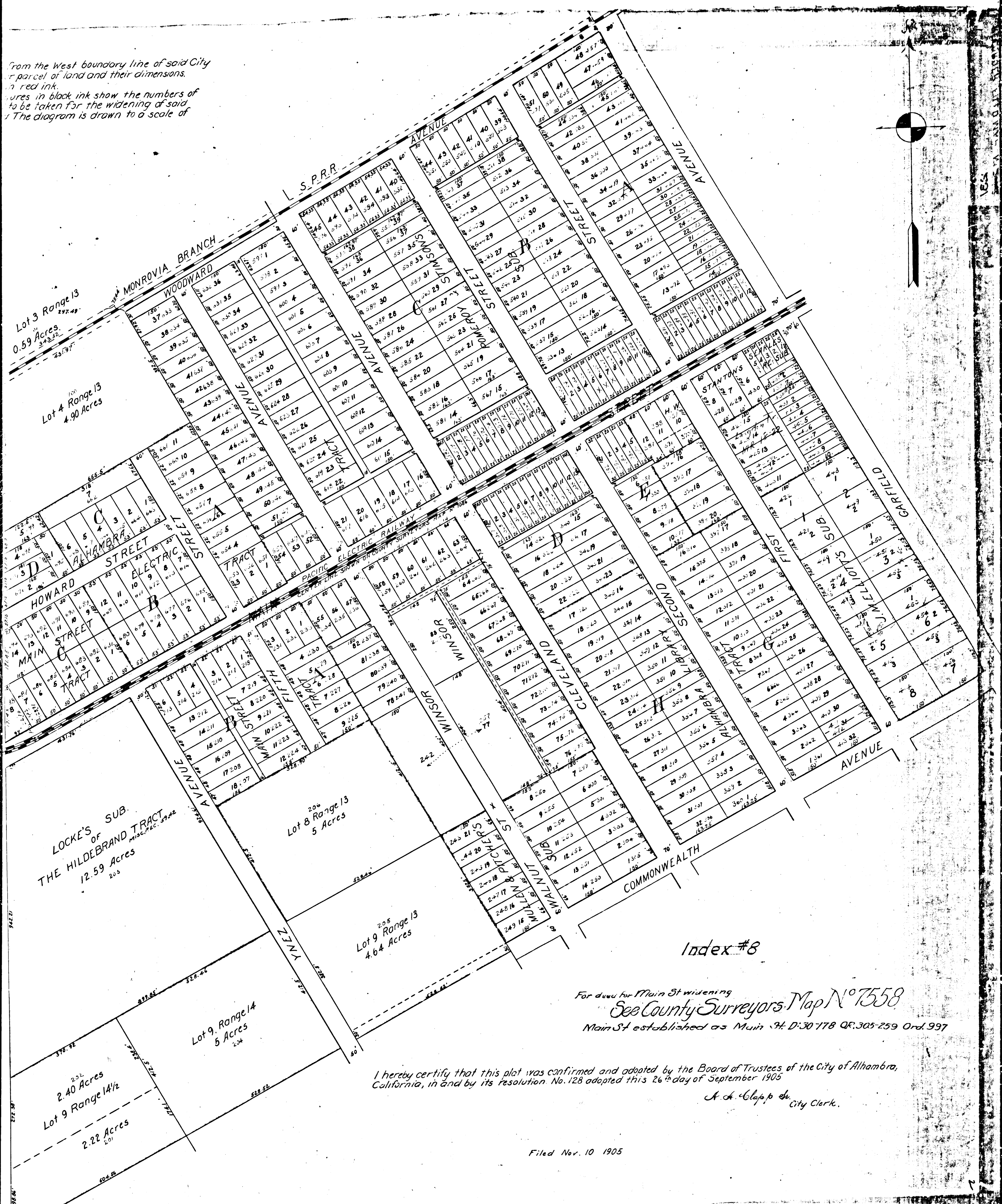
Showing the assessment district and the land to be taken for the widening of Main Street in the City of Alhambra, California from the West boundary line of said to the westerly line of First Street, also showing the lands assessed and the relative location of each district, block, lot, portion of lot or parcel of land and their dimensions. Each district, block, lot, portion of lot or parcel of land taken or assessed is designated and described by the number marked thereon in red ink. Hereon: the mark " means feet; figures in black ink next to property lines show each the length of said lines in feet; other figures in black ink show the numbers of the lots; solid black lines show original lot lines; broken black lines show subdivisions of original lots; orange lines show the land to be taken for the widening of said street; orange tinting shows boundaries of the assessment district; all other tintings show the boundaries of subdivisions named. The diagram is drawn to a scale of 150 feet to one inch.



Index #8

R.F. 231
A 1 OF A 2

From the West boundary line of said City
 or parcel of land and their dimensions,
 in red ink.
 Figures in black ink show the numbers of
 to be taken for the widening of said
 The diagram is drawn to a scale of



Lot 3 Range 13
 0.59 Acres
 297.49'

Lot 4 Range 13
 4.90 Acres
 237.97'

Lot 8 Range 13
 5 Acres

Lot 9 Range 13
 4.64 Acres

Lot 9 Range 14
 5 Acres

Lot 9 Range 14 1/2
 2.22 Acres

Index #8

For deed for Main St widening
 See County Surveyors Map N° 7558
 Main St established as Main St. D: 30778 QR. 305-259 Ord. 997

I hereby certify that this plot was confirmed and adopted by the Board of Trustees of the City of Alhambra,
 California, in and by its resolution No. 128 adopted this 26th day of September 1905

A. C. Clapp, Jr.
 City Clerk.

Filed Nov. 10 1905

R.F. 231
 A2 OF A2