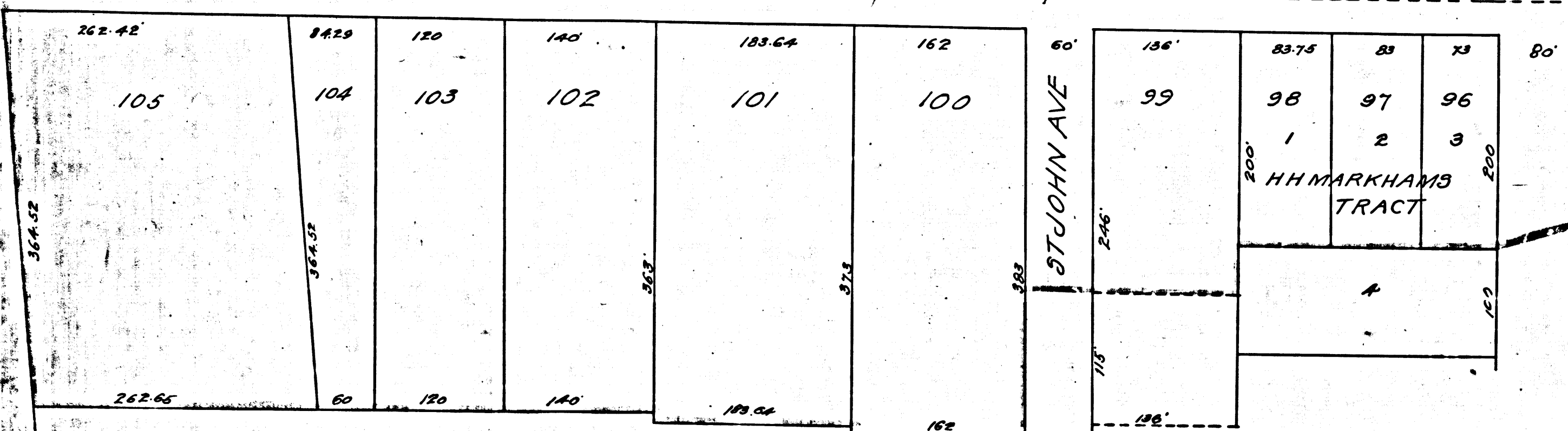
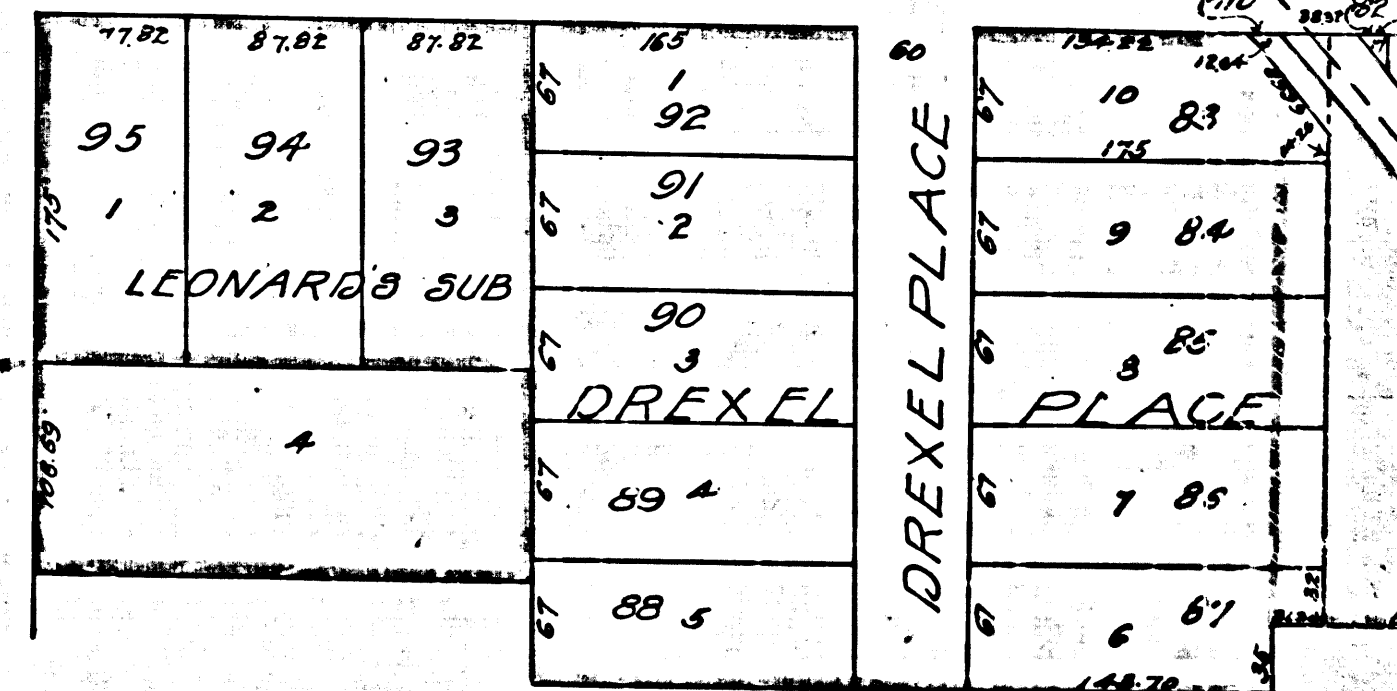
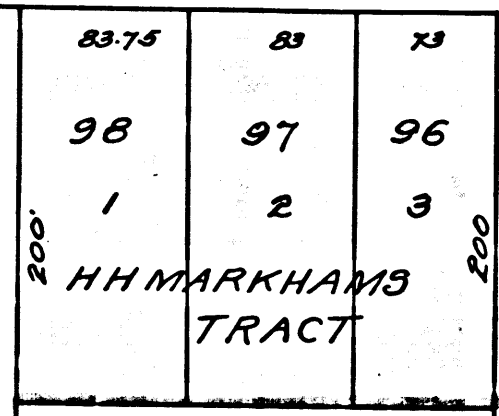


ORANGE GROVE AVENUE



ST. JOHN AVE



Index #8

DIAGRAM

Showing the assessment district and the land to be taken for the widening of California Street in the City of Pasadena, California, from the East line of Fair Oaks Avenue to the West line of Broadway also showing the lands assessed and the relative location of each district, block, lot, portion of lot or parcel of land assessed and their dimensions. Each district, block, lot, portion of lot or parcel of land taken or assessed is designated and described by the number marked thereon in blue ink.

Hereon the mark ' means feet. Figures in black ink next property lines show each the length of said lines in feet. Other figures in black ink show the numbers of the lots. Solid black lines show original lot lines. Broken black lines show subdivisions of original lots. Blue lines show land to be taken for the widening of said California Street. Blue tinting shows boundary of the assessment district. Other tintings show boundaries of subdivisions named. The diagram is drawn to a scale of 100 feet to inch.

I hereby certify that this diagram was confirmed and adopted by the City Council of Pasadena California in and by its Resolution No 1842 1/2 adopted this 27th day of March 1906.

Carl Sargent

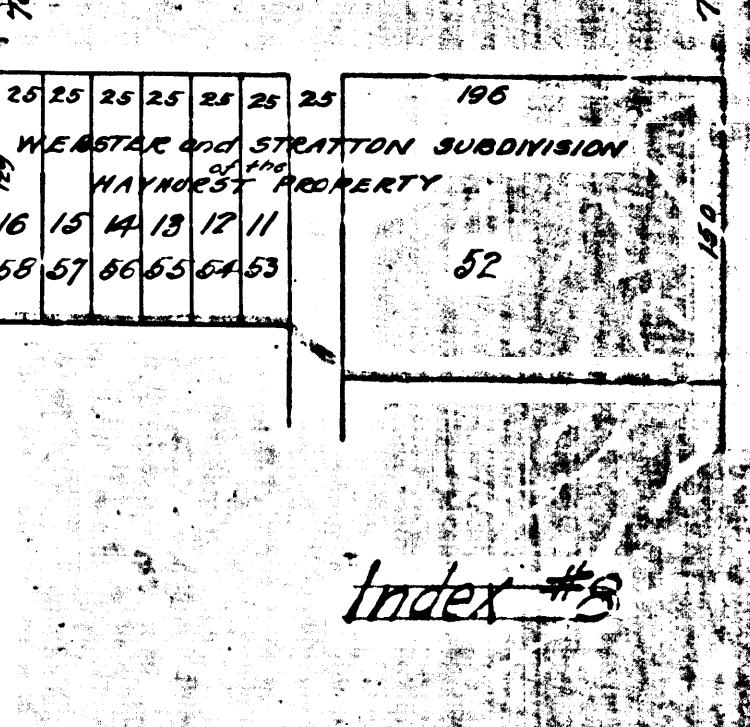
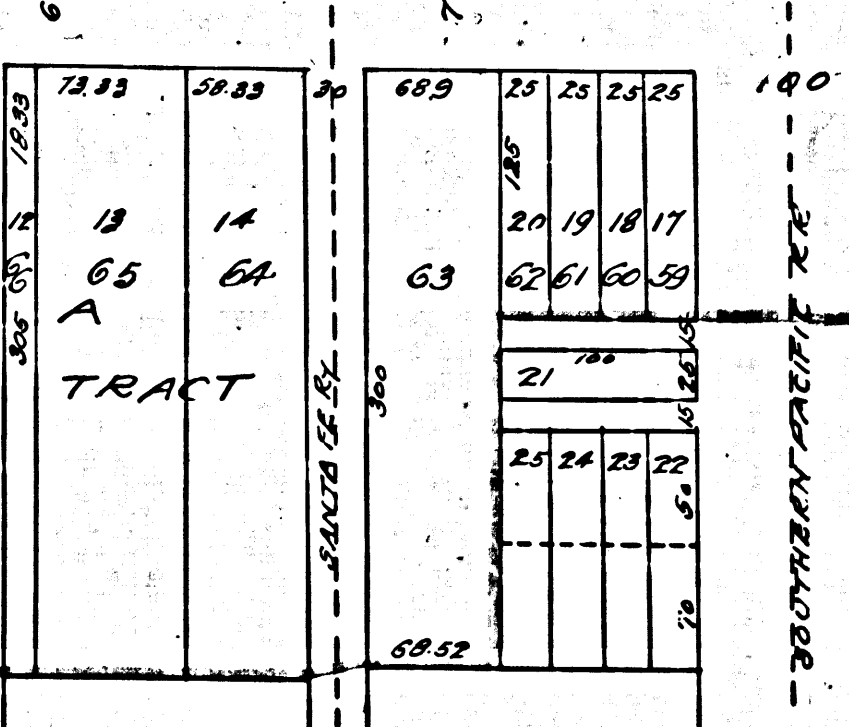
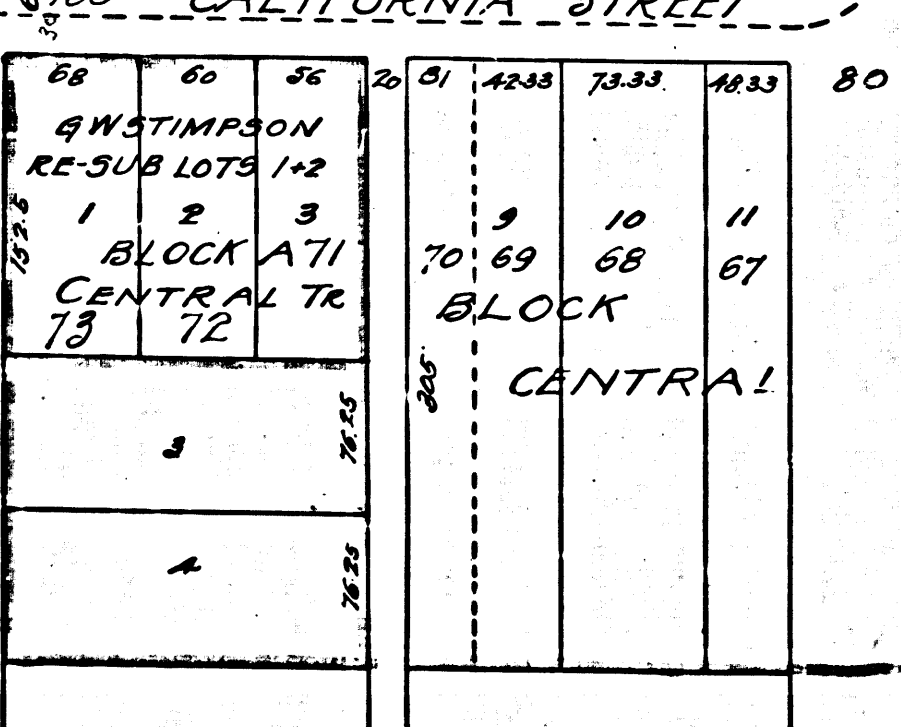
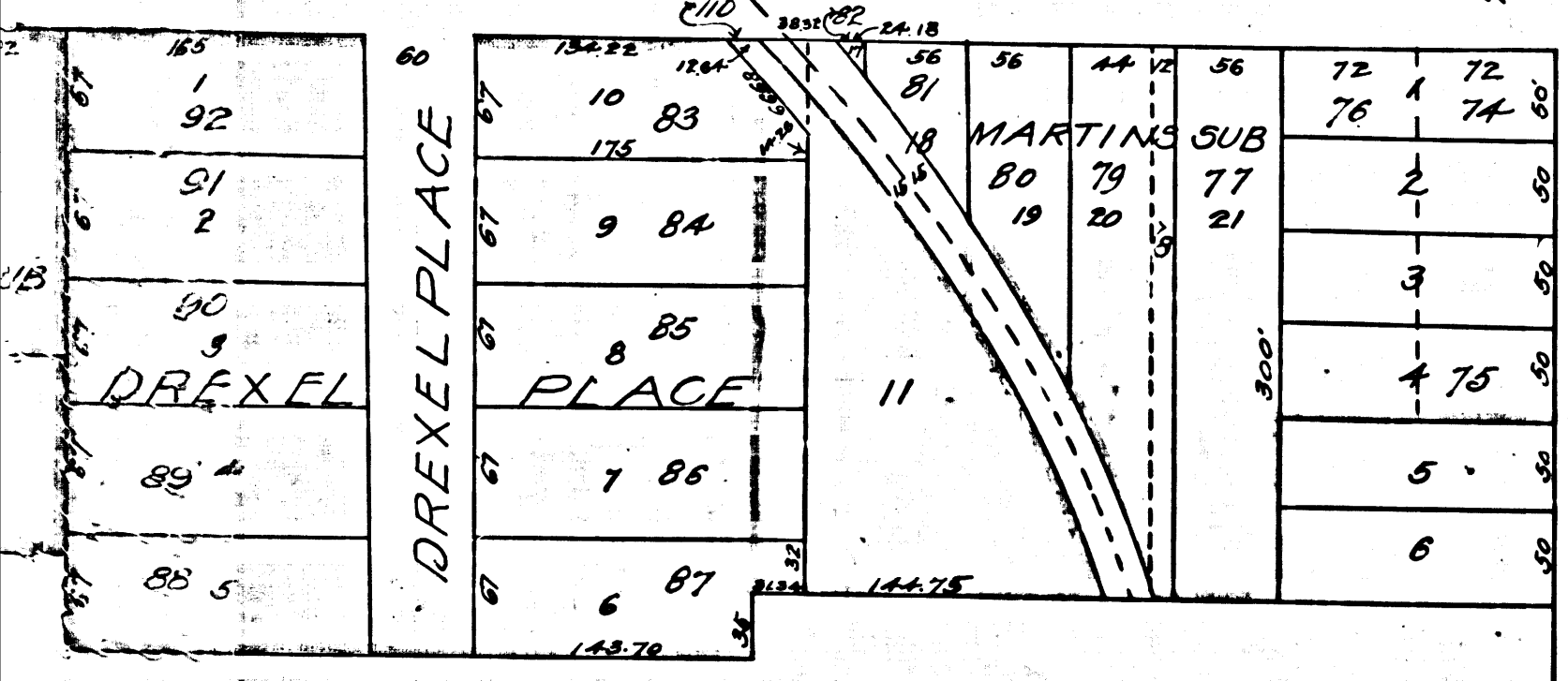
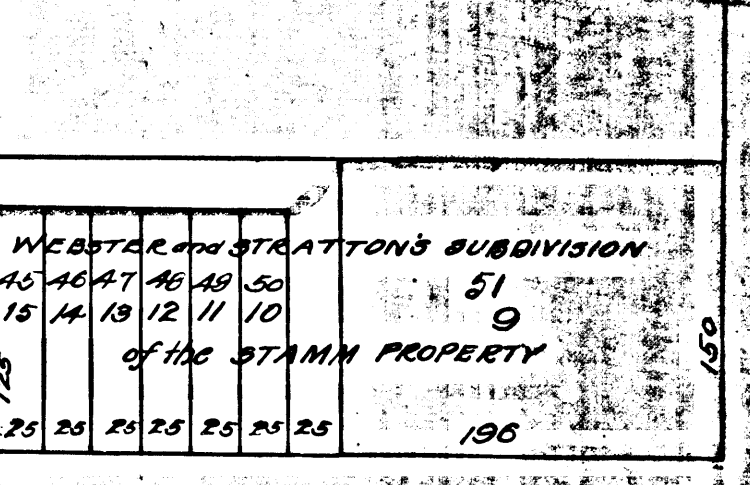
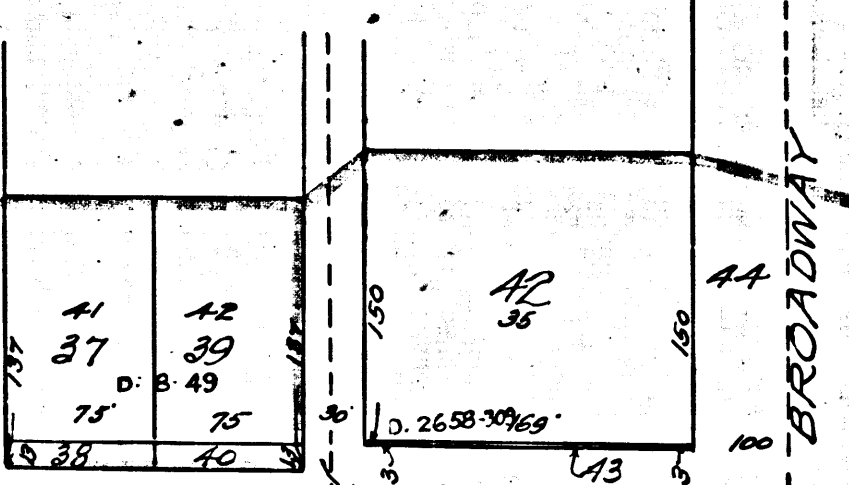
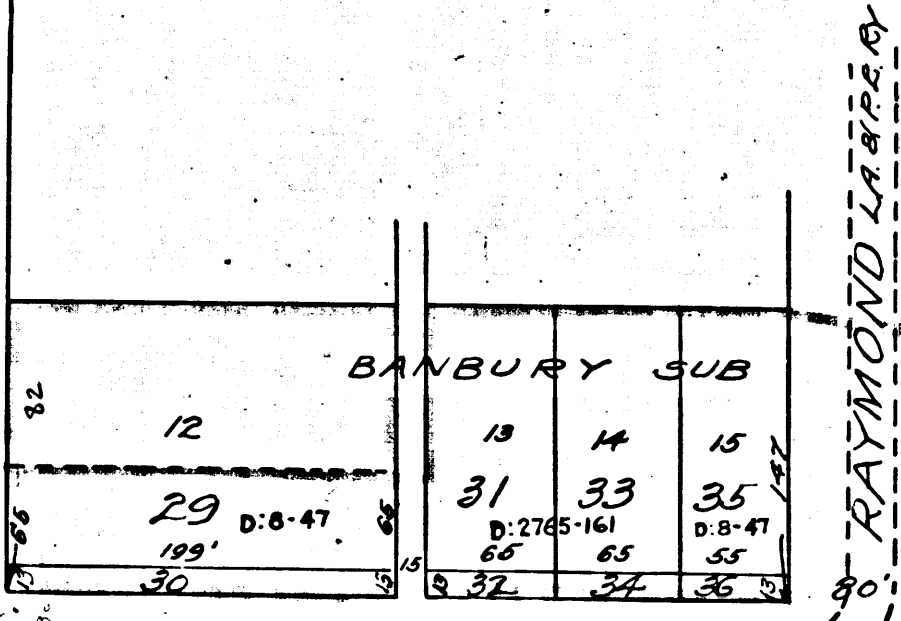
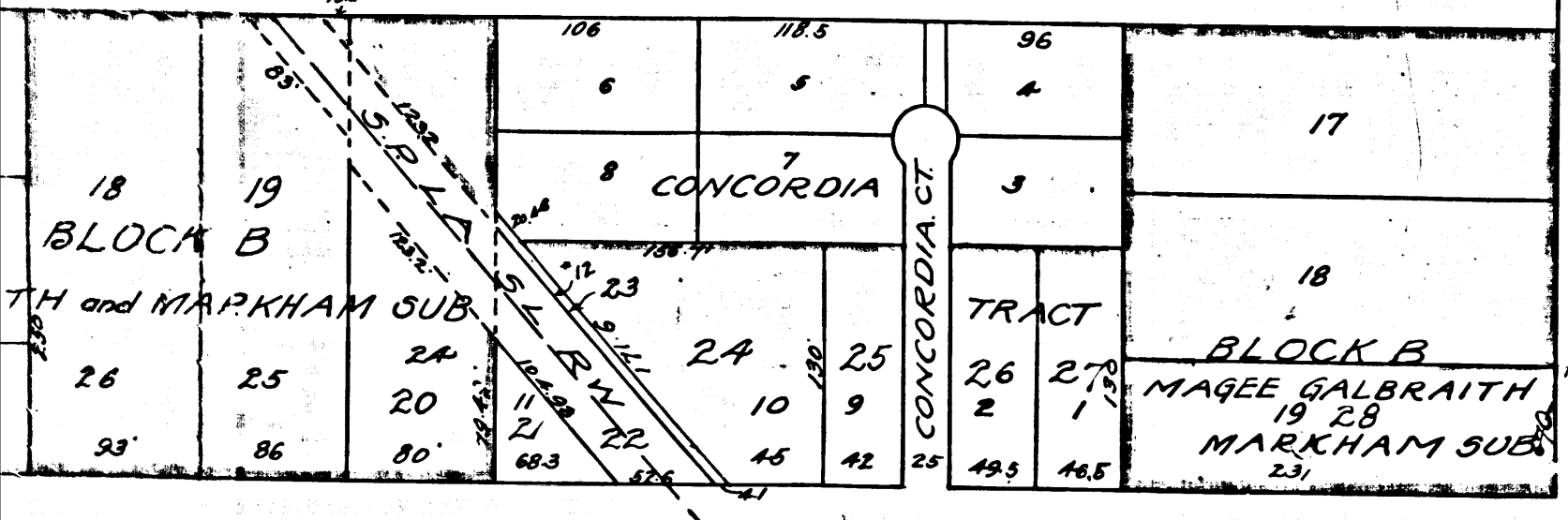
Thomas Dyer
City Clerk

S.F. PEARSON
CITY ENGINEER

R.F.	237	
A 1	OF	A 2

6-309

86-44



#237

Filed March 28 1906

R.F. 237
A 2 OF A 2

Index #8