

MAP
OF
THE NORTHERN PORTION OF
THE EX MISSION DE
SAN FERNANDO

CONTAINING 55.276 ACRES THE PROPERTY OF
THE HON CHARLES MACLAY
 SHOWING THE LOCATION OF SAN FERNANDO

CITY

THE SOUTHERN PACIFIC RAILROAD DEPOT
 AND THE ADJACENT 40 ACRE
FARMING TRACTS

SURVEYED BY W.P. REYNOLDS
 MAY AND JUNE 1874

SCALE 20 CHS TO 1 INCH
 Var. 15° 40' East.

For D.C.C. No. 1526 see C.F. 896.

Section Lines colored Red
 Township - Black
 1/4 Section - Blue
 40 Acre Tracts - Yellow

Filed October 10 1874.

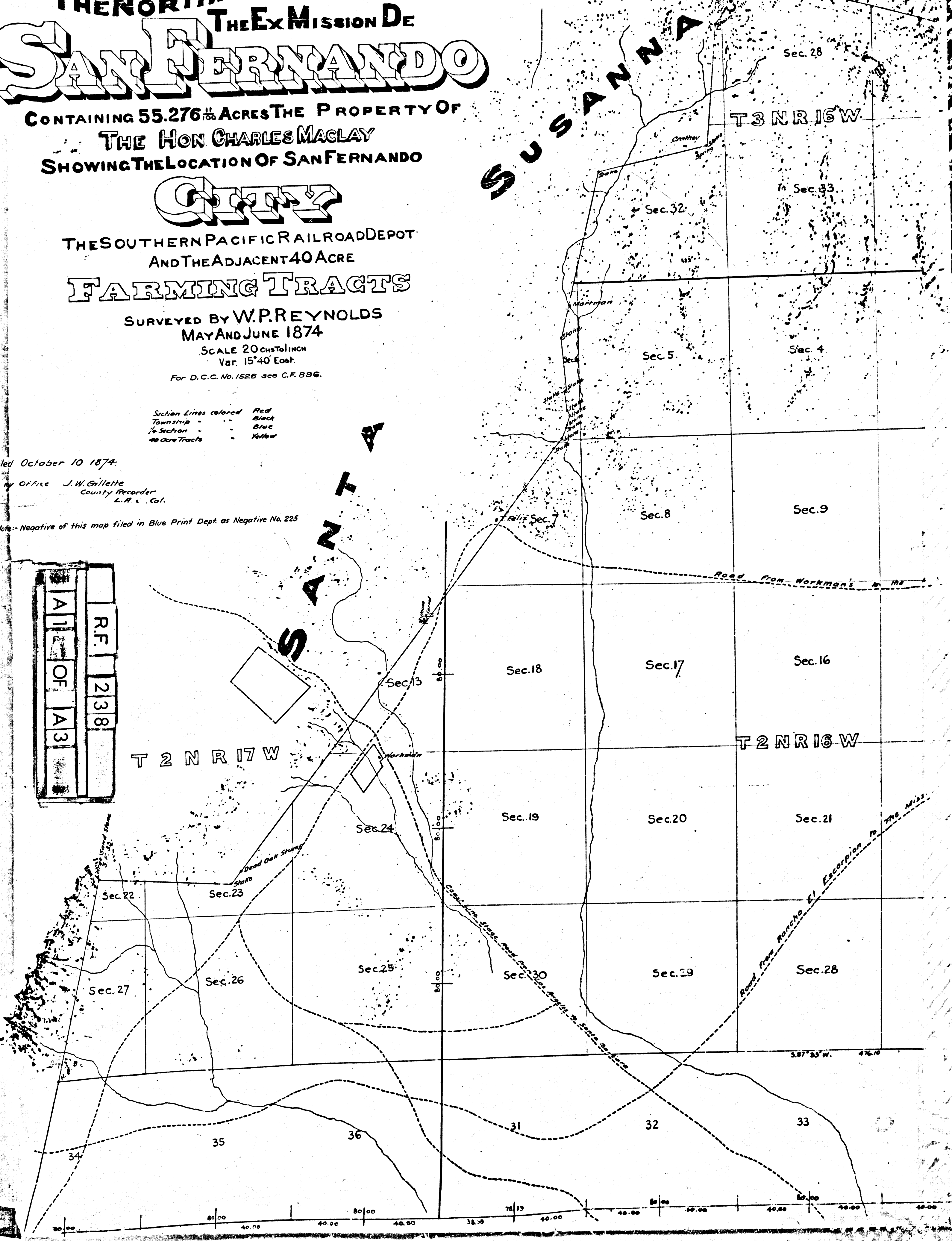
in my Office J.W. Gillette
 County Recorder
 L.A. & Cal.

Note: Negative of this map filed in Blue Print Dept. as Negative No. 225

1	R.F.
2	238
3	
4	
5	
6	
7	
8	
9	
10	
11	
12	
13	
14	
15	
16	
17	
18	
19	
20	
21	
22	
23	
24	
25	
26	
27	
28	
29	
30	
31	
32	
33	
34	
35	
36	

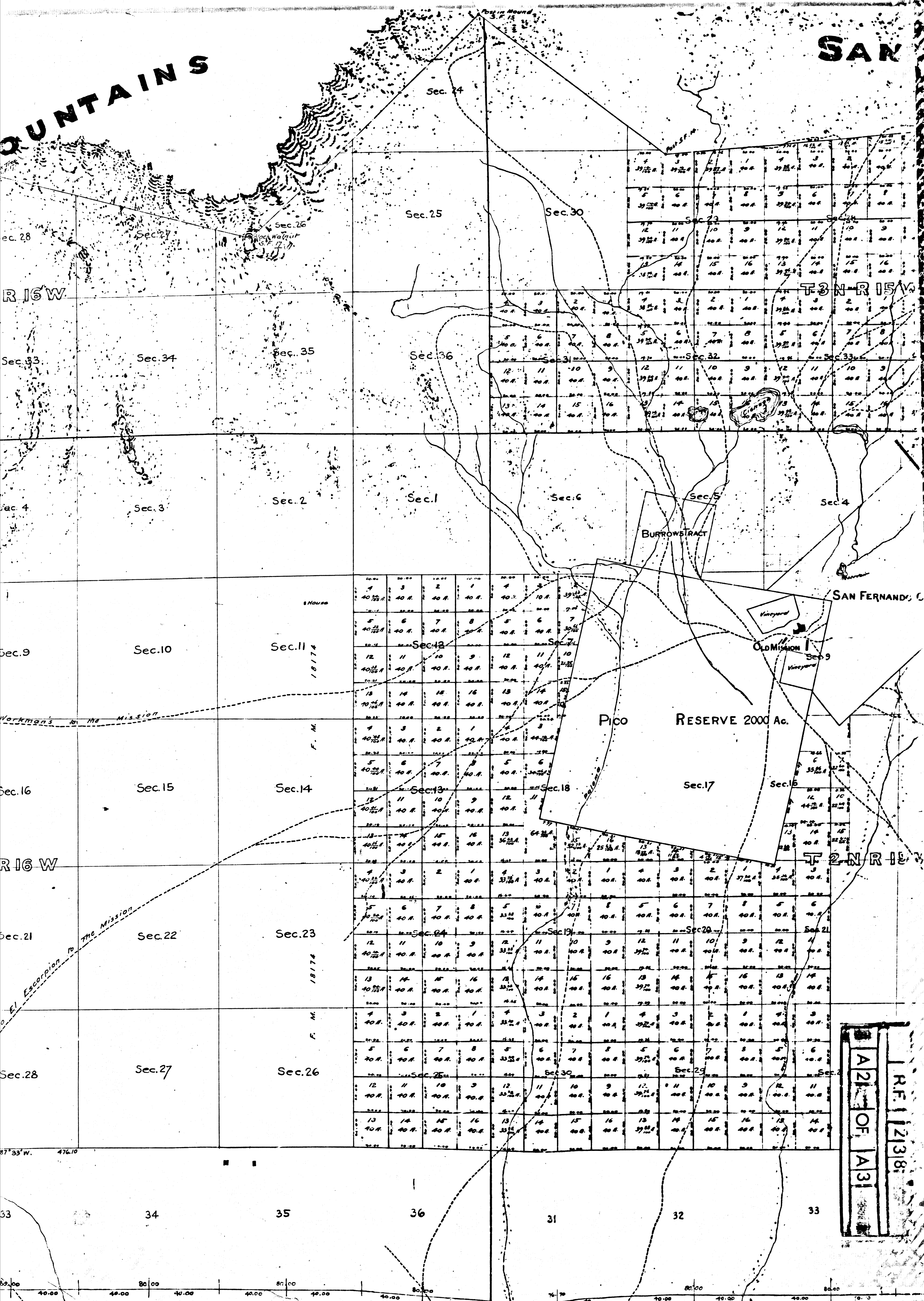
SUSANNA MOUNTAIN

SANTA



MOUNTAINS

SAN



RF 12138
 A21 OF A31



SAN FERNANDO

MOUNTAINS

R.F. 238
A3 OF A3

