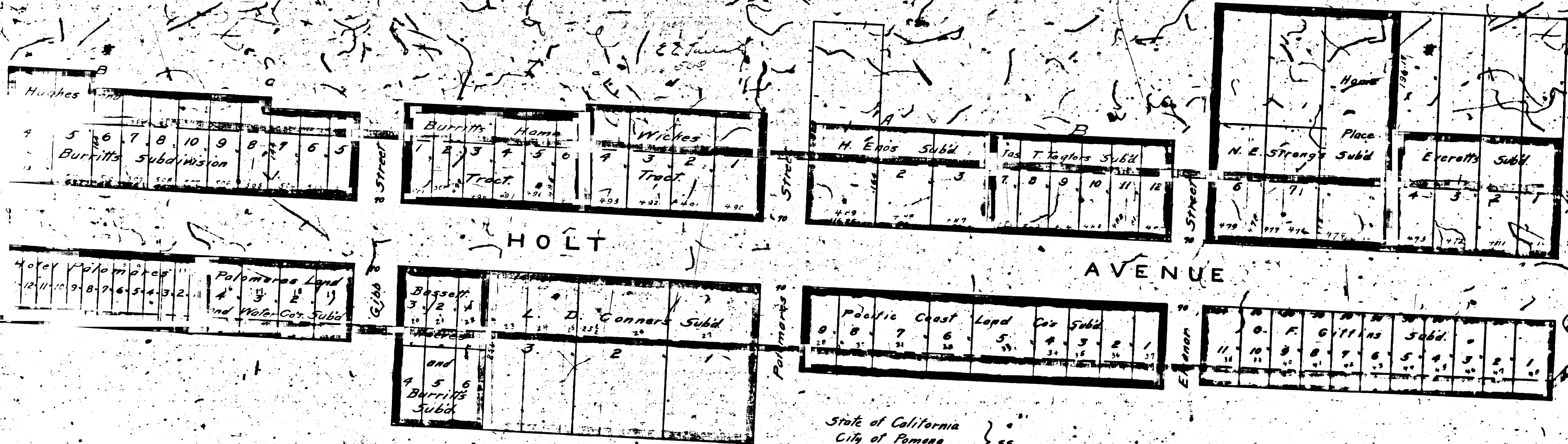


MAP
 Showing the
 ASSESSMENT DISTRICT
 for the opening of
 HOLT AVENUE
 through Blocks 199 and 200 of Pomona Tract
 CITY of POMONA, CAL.
 in accordance with Resolution of Intention No. 177

Note: Green bolden line indicates Assessment District.

Scale 1 inch = 100 ft.

Filed
 Dec 12 1907
 47

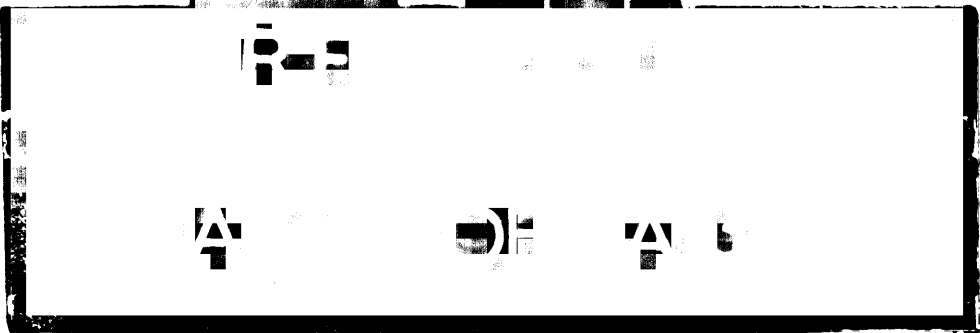


State of California }
 City of Pomona } 55
 County of Los Angeles }

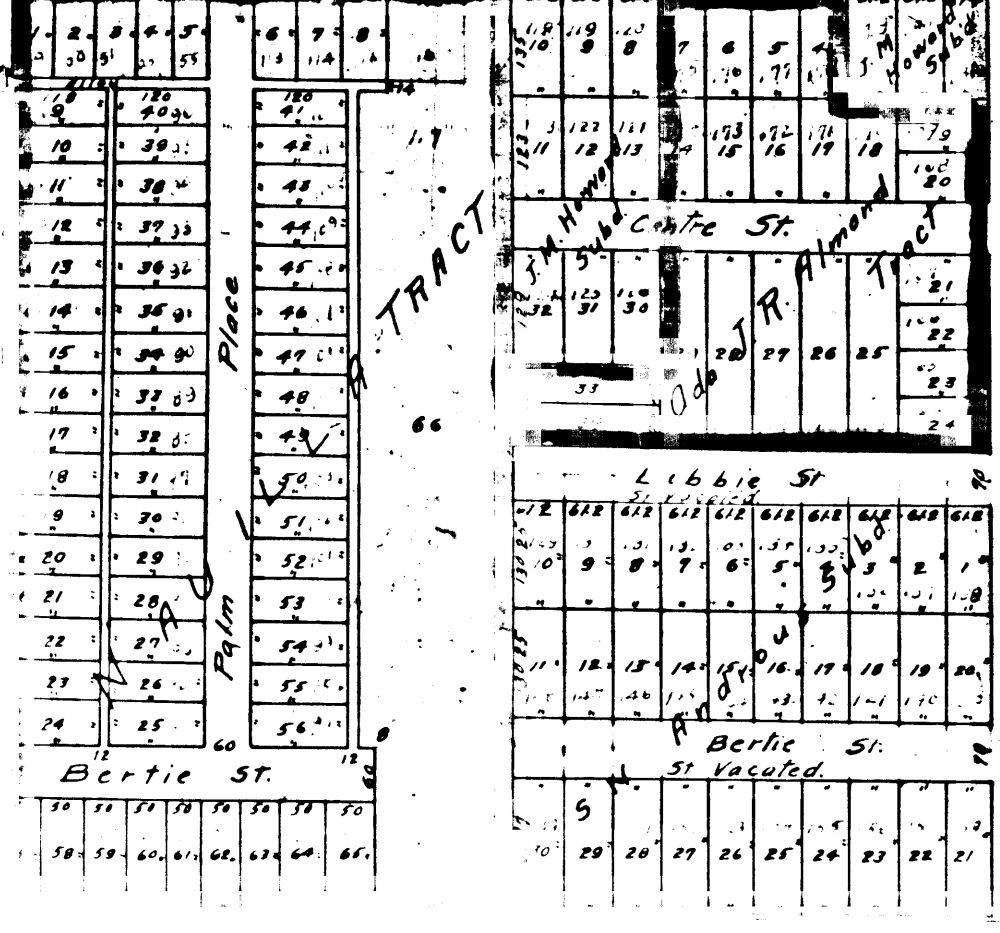
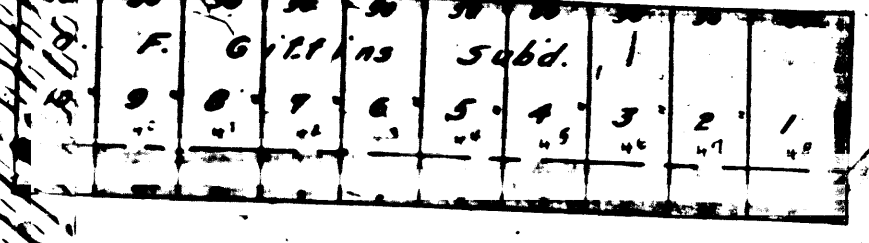
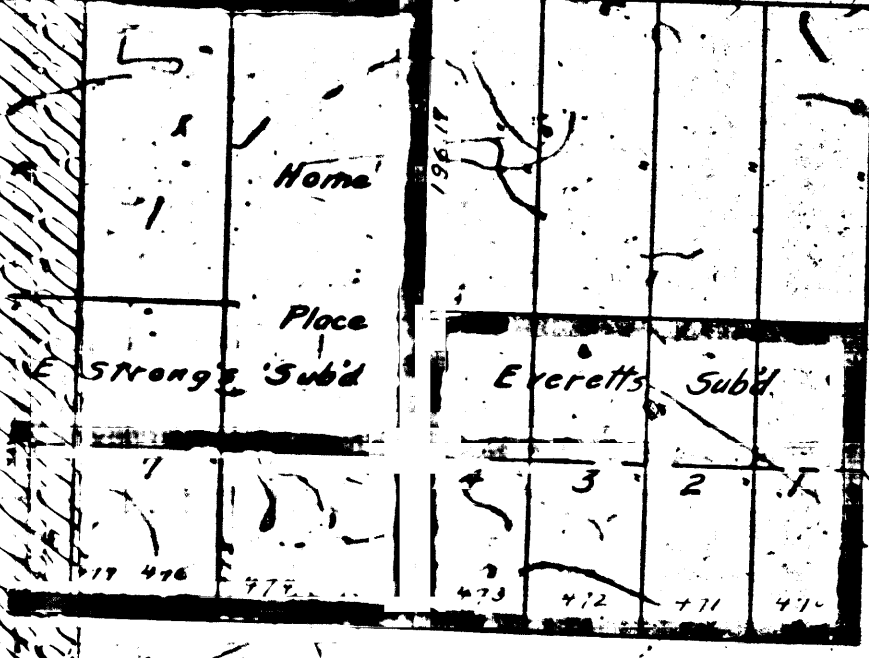
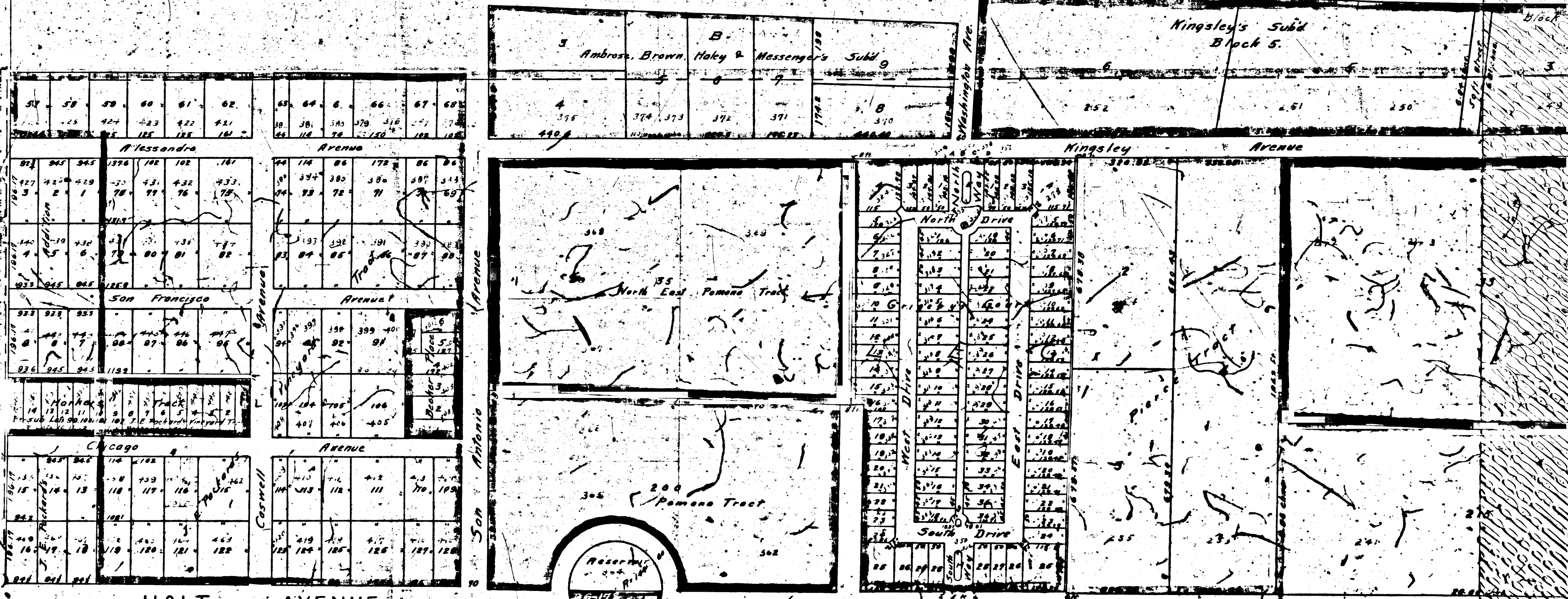
I, Thomas R. Trotter, City Clerk of the City of Pomona, do hereby certify the foregoing to be a full, true and correct copy of the plat made and filed by the commissioners appointed by the Board of Trustees of the City of Pomona, Los Angeles County, California, to assess the benefits and damages, and to have general supervision of the proposed work of opening and extending Holt Avenue to a width of seventy (70) feet, through that portion of Blocks 199 and 200, of the Pomona Tract, in the City of Pomona, now occupied by the Holt Avenue reservoir and necessary for the straightening of said Avenue; as finally confirmed and adopted by said Board, November 5, 1907.

In Testimony whereof, I have hereunto set my hand and affixed the corporate seal of said City, at my office, this 25th day of November, 1907.

Thomas R. Trotter
 City Clerk of the City of Pomona

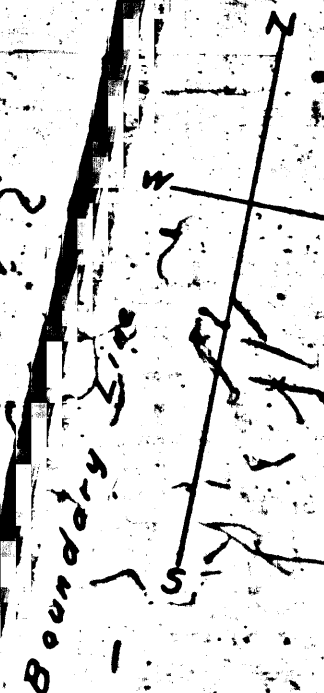
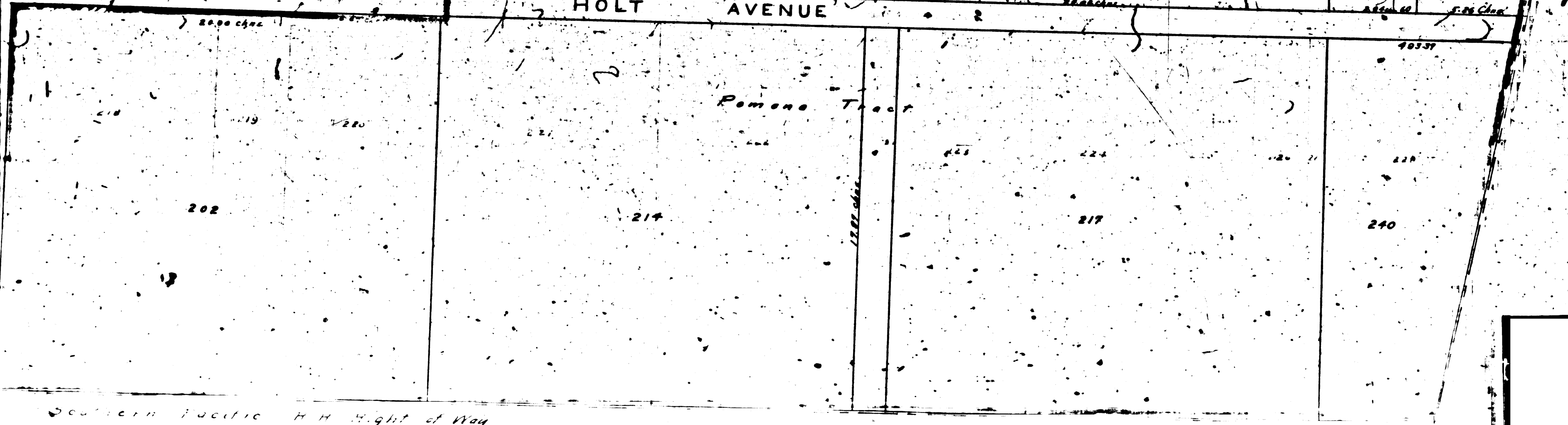
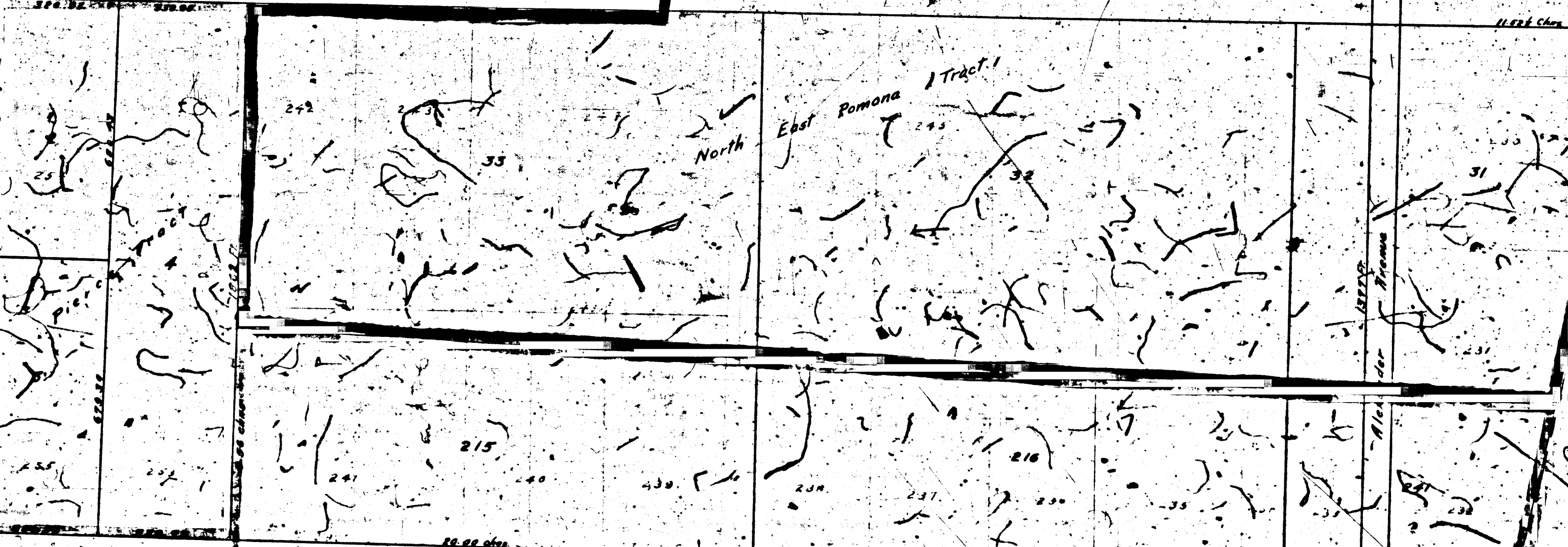
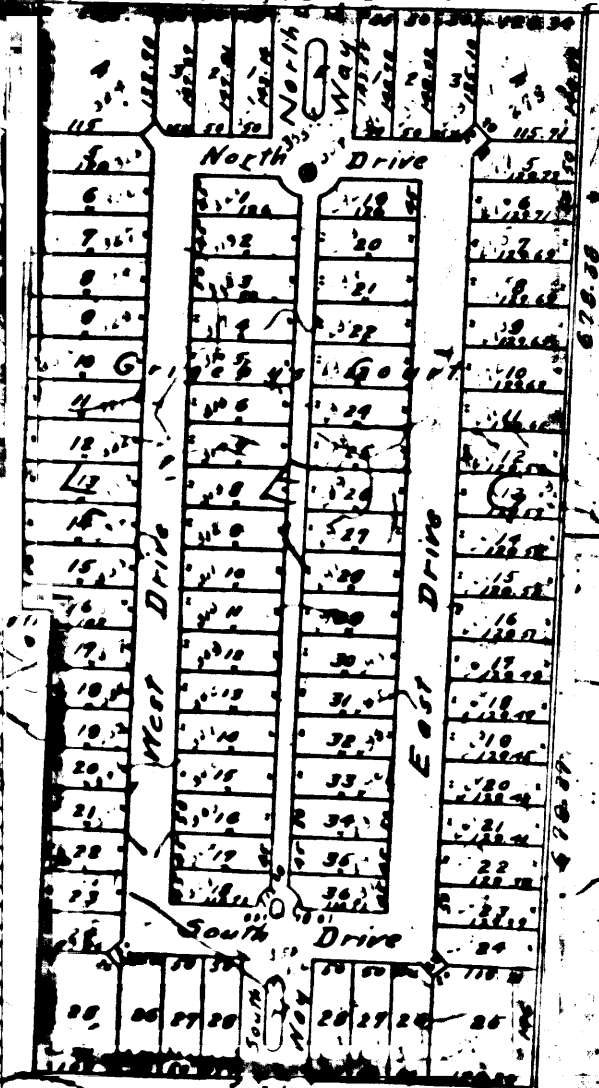
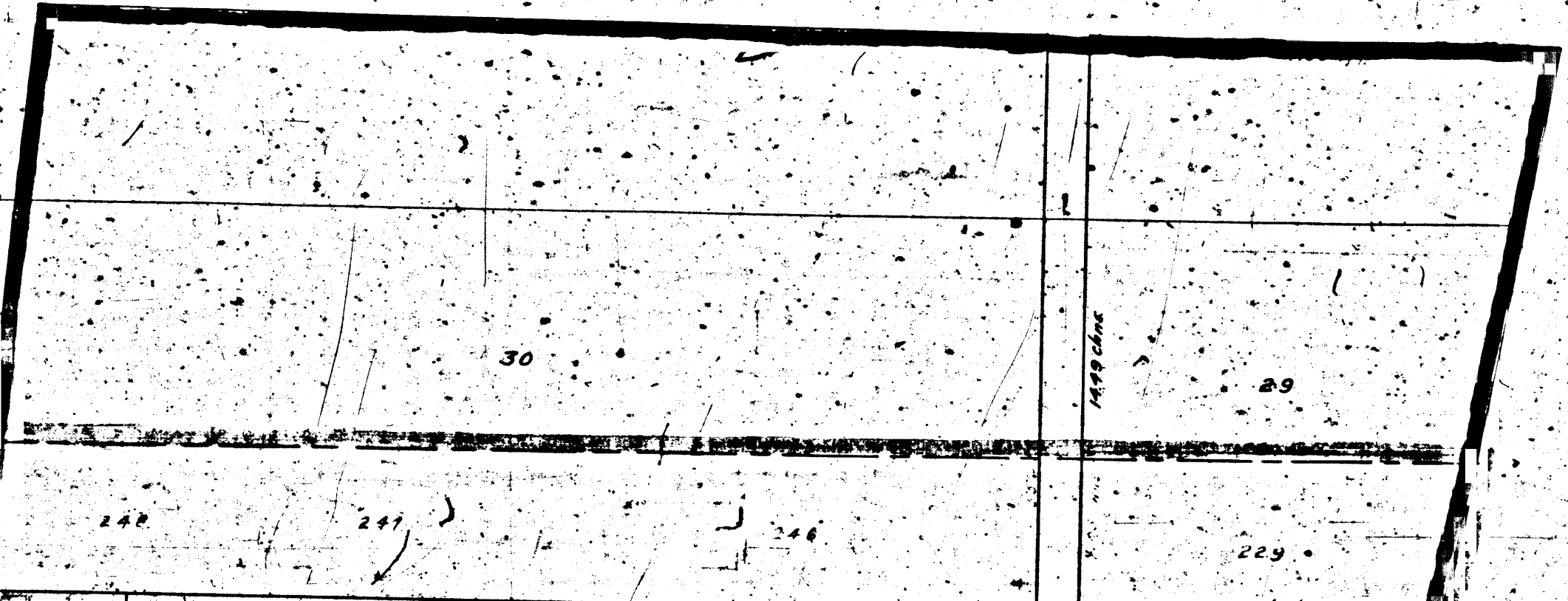
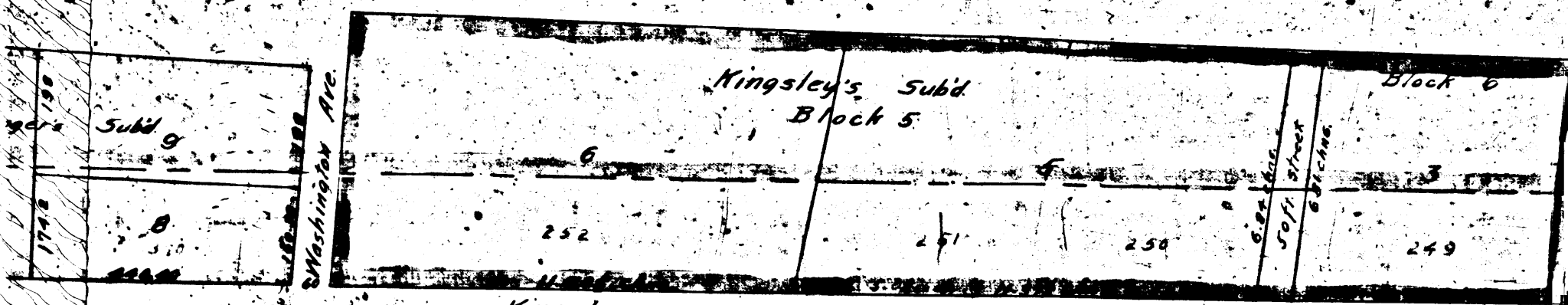


Scale 1 inch = 200 ft



I, [Name], do hereby certify the foregoing plat filled by the commissioners of Angeles County, California, to a width of the proposed work of 100 feet, through that portion of Pomona, now occupied by the [Name] of said Avenue, as finally con- and attested the corporate number, 1907

Scale 1 inch = 200 ft



City Boundary Line

Southern Pacific H. H. Right of Way