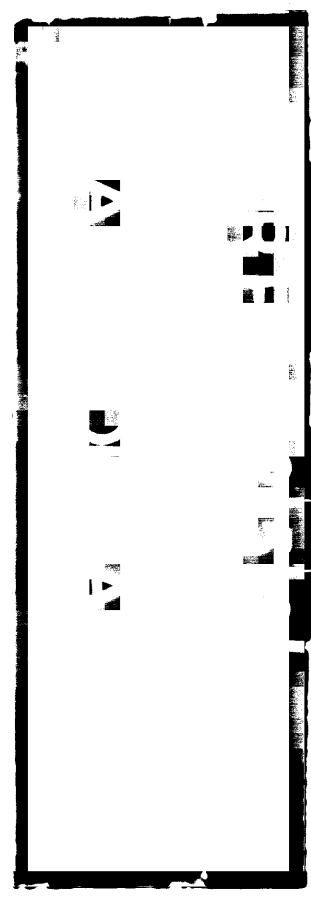


W B Co Lot 1, L W Giddings
Tract 1 MAR 5 1907

W B Co Mountain View
Cemetery MAR 5 1907



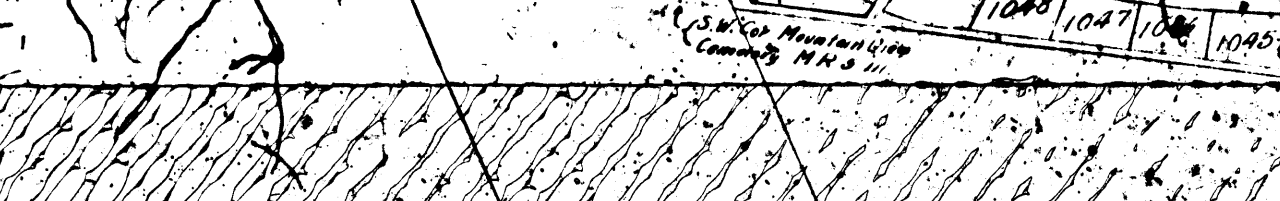
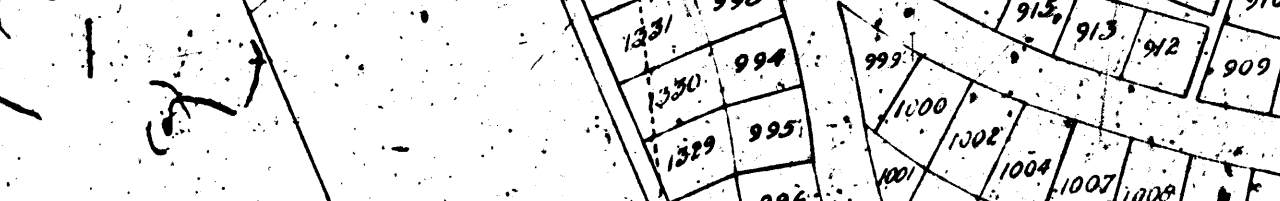
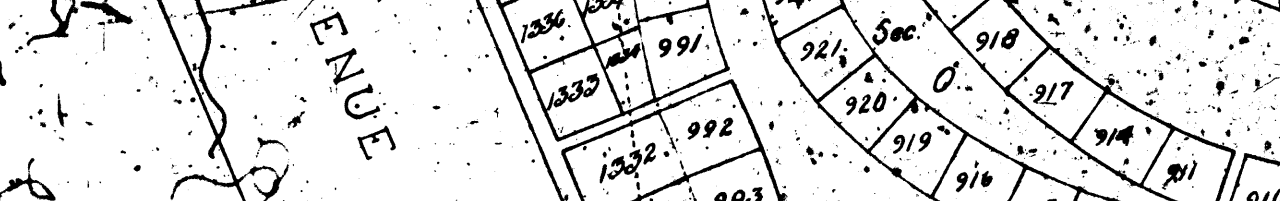
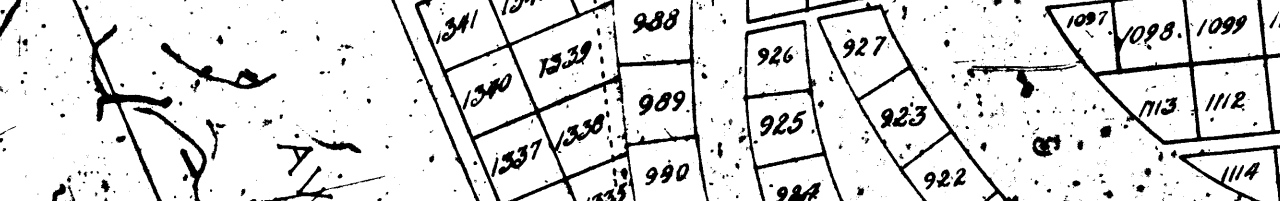
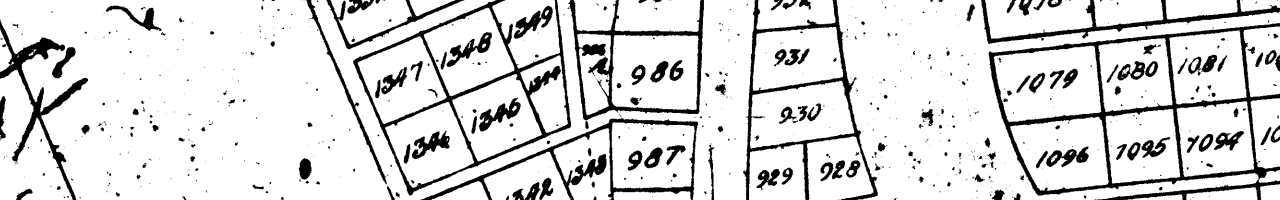
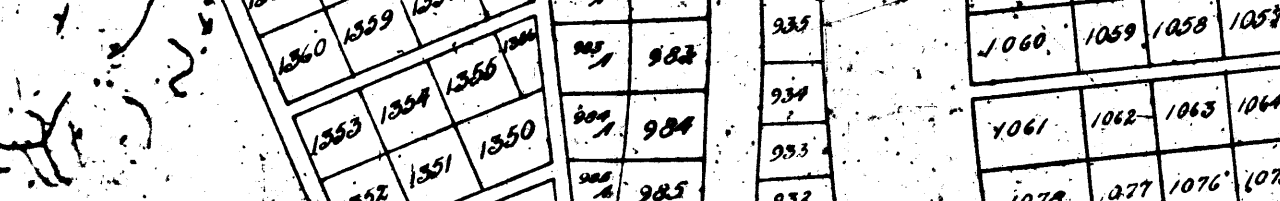
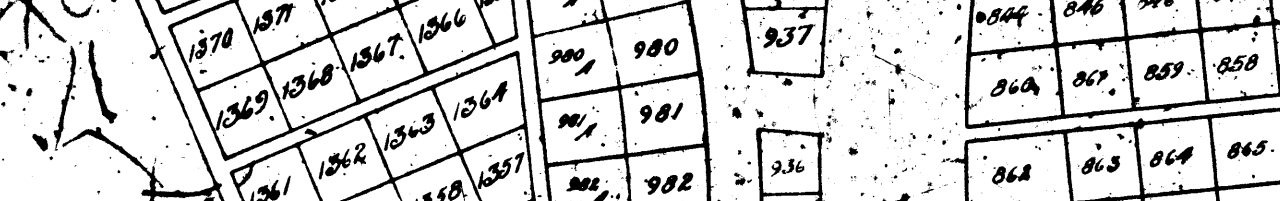
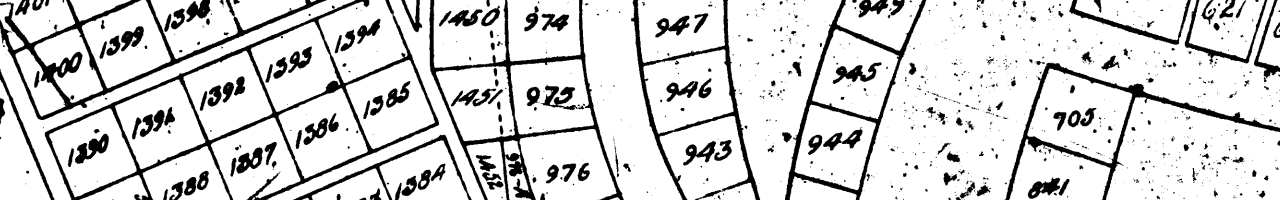
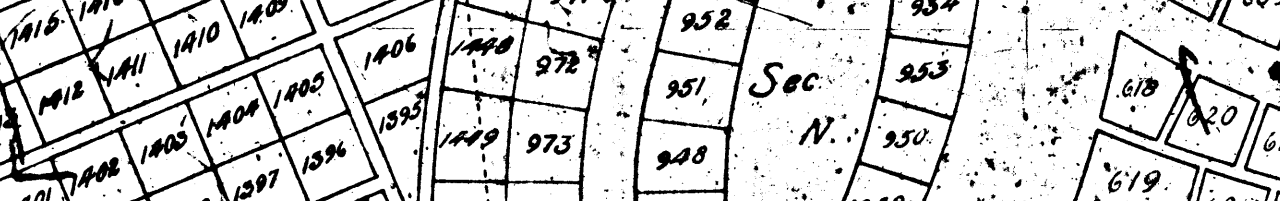
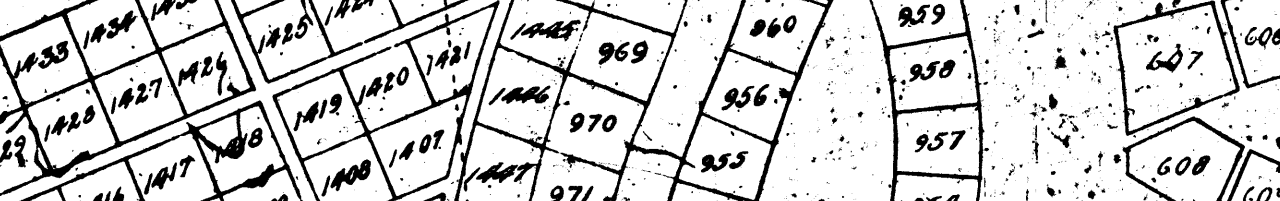
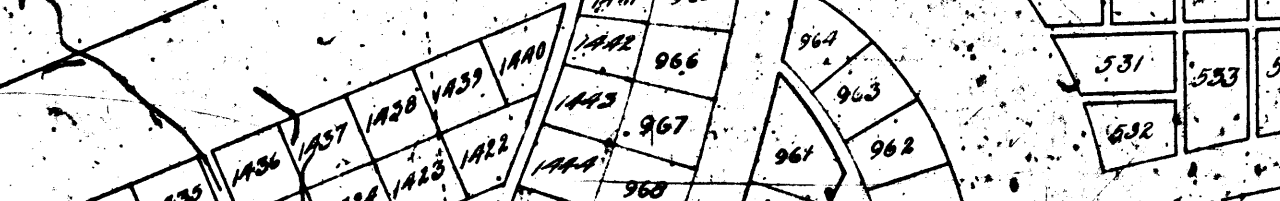
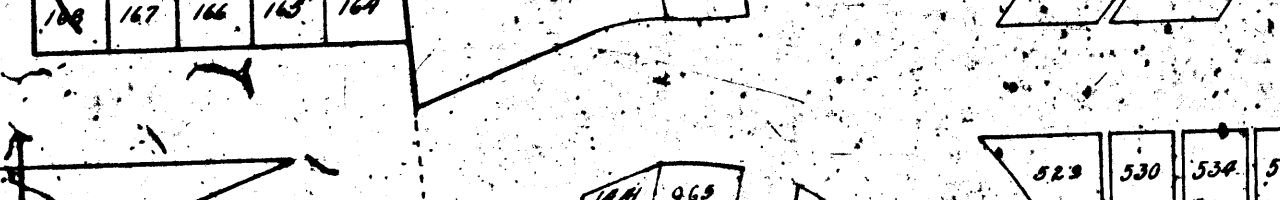
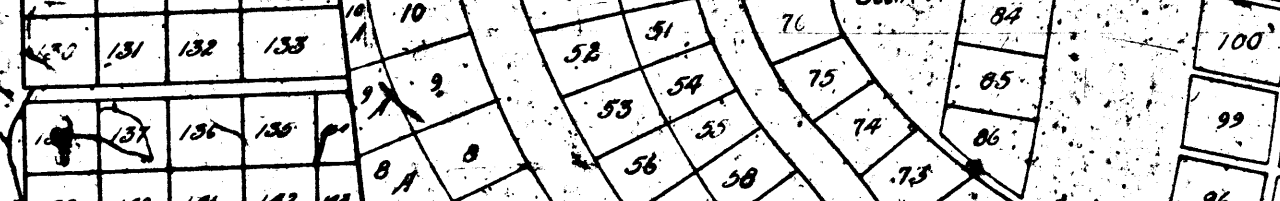
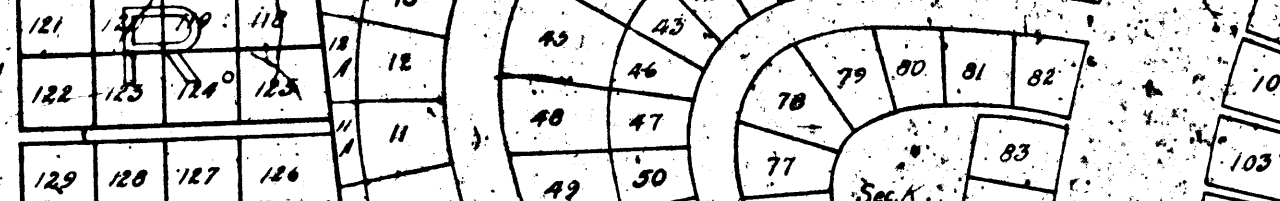
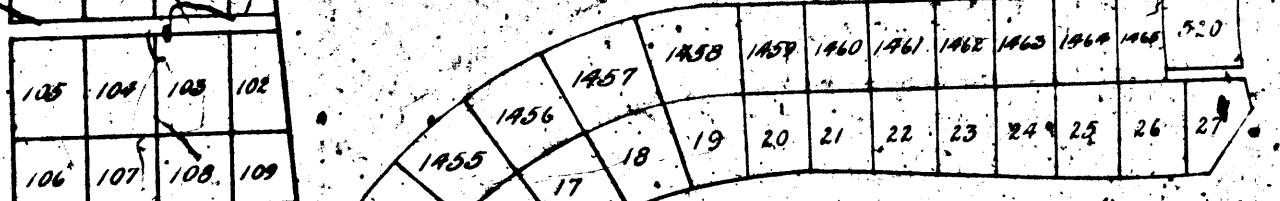
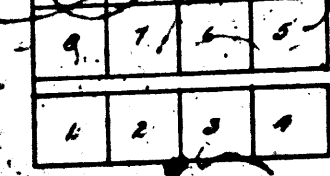
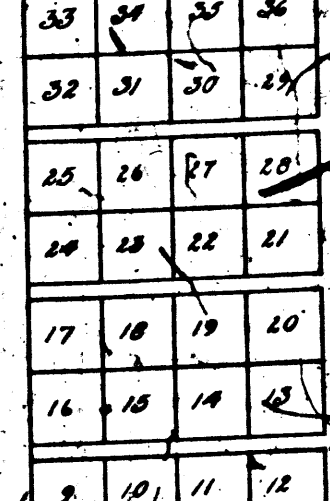
SEC. J

SEC. K

FAIR

MOUNTAIN VIEW AVENUE S

80



MOUNTAIN VIEW CEMETERY RE-PLAT

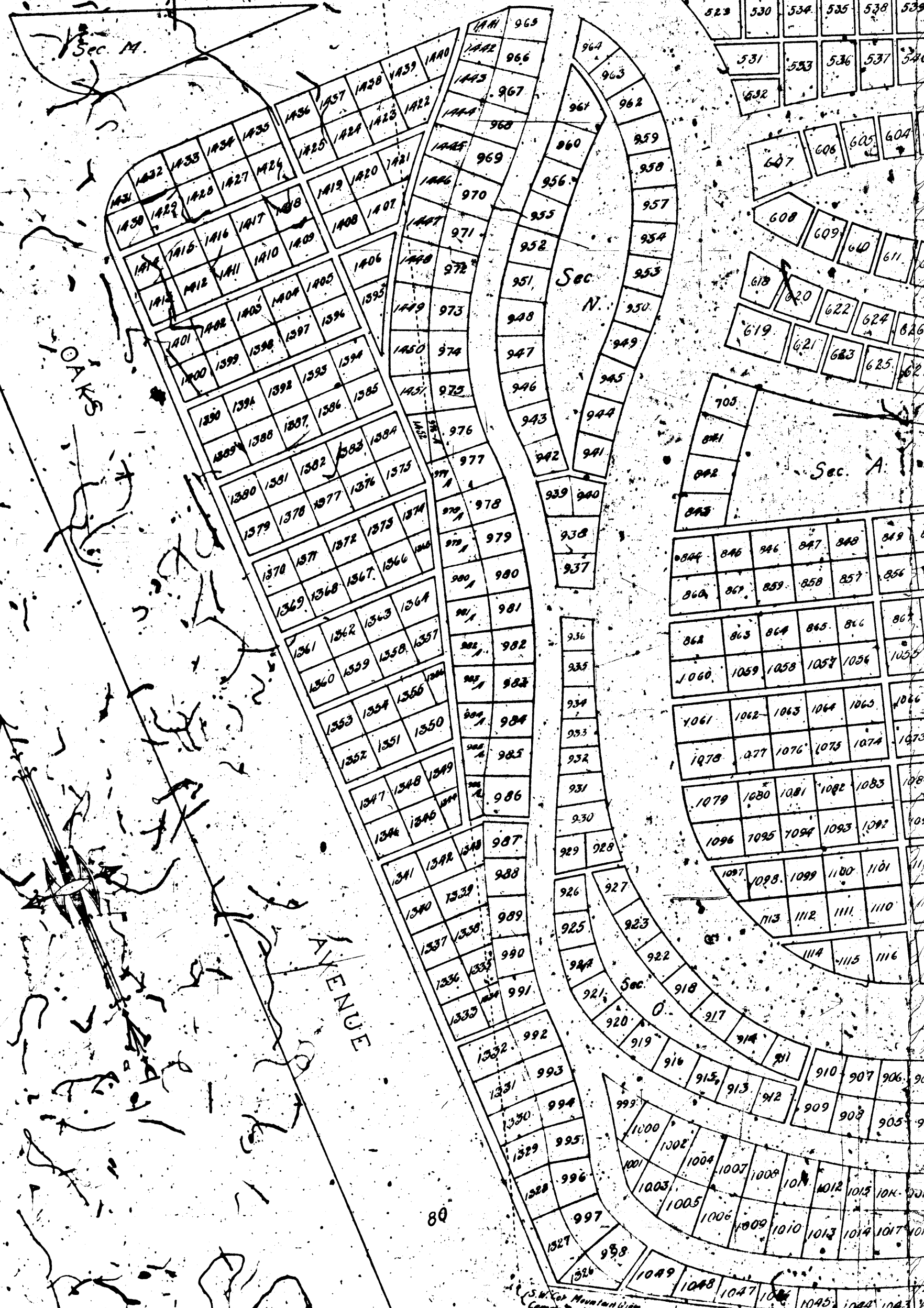
BEING A RE-PLAT OF MOUNTAIN VIEW CEMETERY, AS RECORDED IN BOOK 5, PAGE 111, MISCELLANEOUS RECORDS OF LOS ANGELES COUNTY, AND AN ADDITION TO SAID CEMETERY OF A PORTION OF LOT 1, OF THE L. W. GIDDINGS TRACT AS RECORDED IN BOOK 5, PAGES 106-7, MISCELLANEOUS RECORDS OF SAID COUNTY.

Re-Platted Portion & Addition.
Surveyed by **ALLIN BRIS** Dec. 1907

Note: Lots 1 to 50, inclusive, 51 to 100, inclusive, 101 to 150, inclusive, 151 to 200, inclusive, 201 to 250, inclusive, 251 to 300, inclusive, 301 to 350, inclusive, 351 to 400, inclusive, 401 to 450, inclusive, 451 to 500, inclusive, 501 to 550, inclusive, 551 to 600, inclusive, 601 to 650, inclusive, 651 to 700, inclusive, 701 to 750, inclusive, 751 to 800, inclusive, 801 to 850, inclusive, 851 to 900, inclusive, 901 to 950, inclusive, 951 to 1000, inclusive are identical in position and number (except lot 500) with the corresponding lot numbers on the original map of Mountain View Cemetery as recorded in Book 5, Page 111, Miscellaneous Records and are separated herein from the addition and from the Re-platted portions of the original Cemetery by Red tinting.



Scale - 1 inch = 40 feet



OAKS

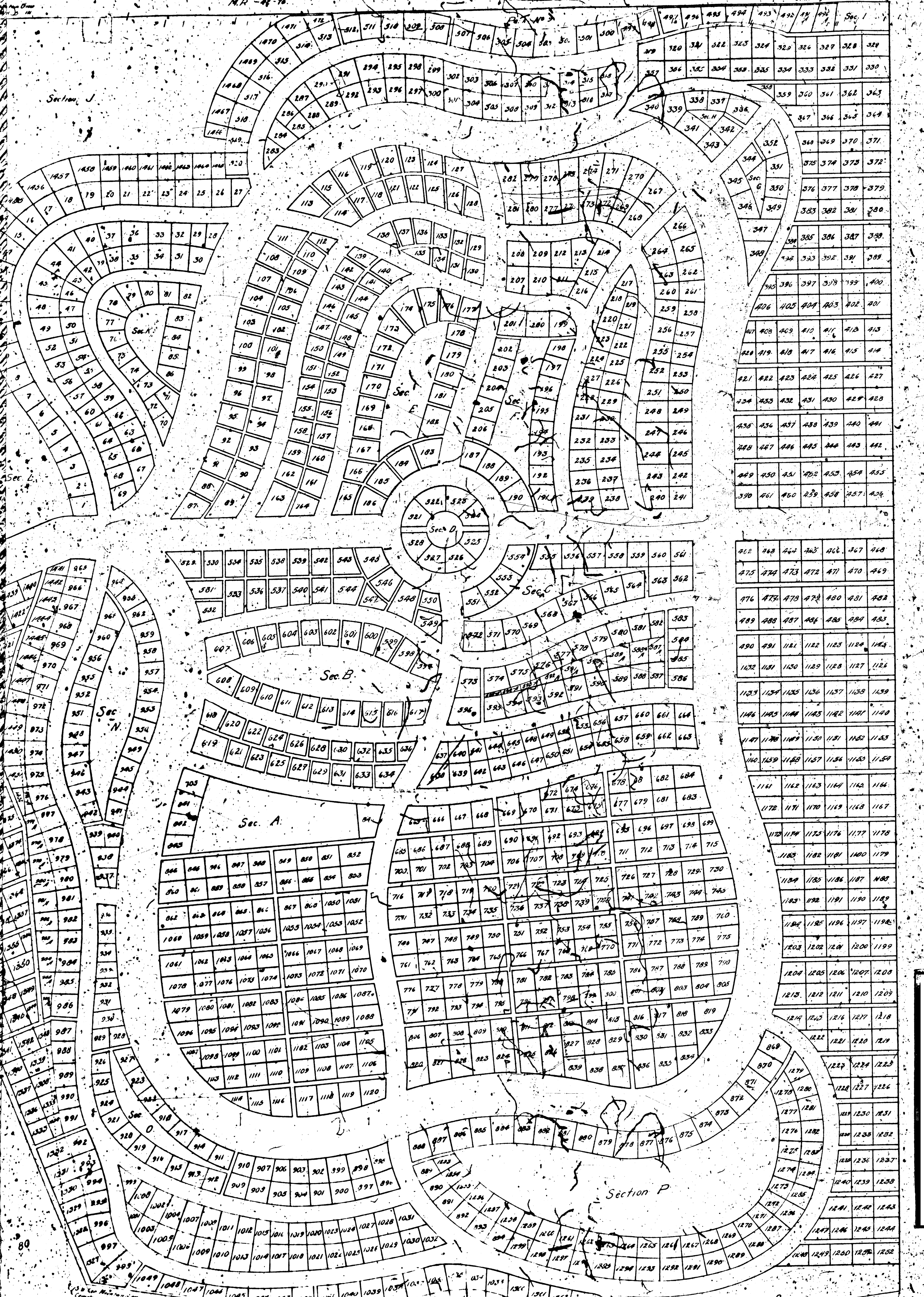
N

80

U.S. Nat. Mountain View Cemetery MAR 5 1907

ALTADENA MAP No. 2
N.H. - 44-76.

NE Cor. Mountain Div.
Gen. Inv. MA 5-111



Section J

Section L

Section N

Section O

Section K

Section E

Section B

Section A

Section C

Section D

Section F

Section P

Section G

Section H

Section I

Section M

Section S

Section T

Section U

Section V

Section W

Section X

Section Y

Section Z

Section AA

Section AB

Section AC

Section AD

Section AE

Section AF

Section AG

Section AH

Section AI

Section AJ

Section AK

Section AL

Section AM

Section AN

Section AO

Section AP

Section AQ

Section AR

Section AS

Section AT

Section AU

Section AV

Section AW

Section AX

Section AY

Section AZ

Section BA

Section BB

Section BC

Section BD

Section BE

Section BF

Section BG

Section BH

Section BI

Section BJ

Section BK

Section BL

Section BM

Section BN

Section BO

Section BP

Section BQ

Section BR

Section BS

Section BT

Section BU

Section BV

Section BW

Section BX

Section BY

Section BZ

Section CA

Section CB

Section CC

Section CD

Section CE

Section CF

Section CG

Section CH

Section CI

Section CJ

Section CK

Section CL

Section CM

Section CN

Section CO

Section CP

Section CQ

Section CR

Section CS

Section CT

Section CU

Section CV

Section CW

Section CX