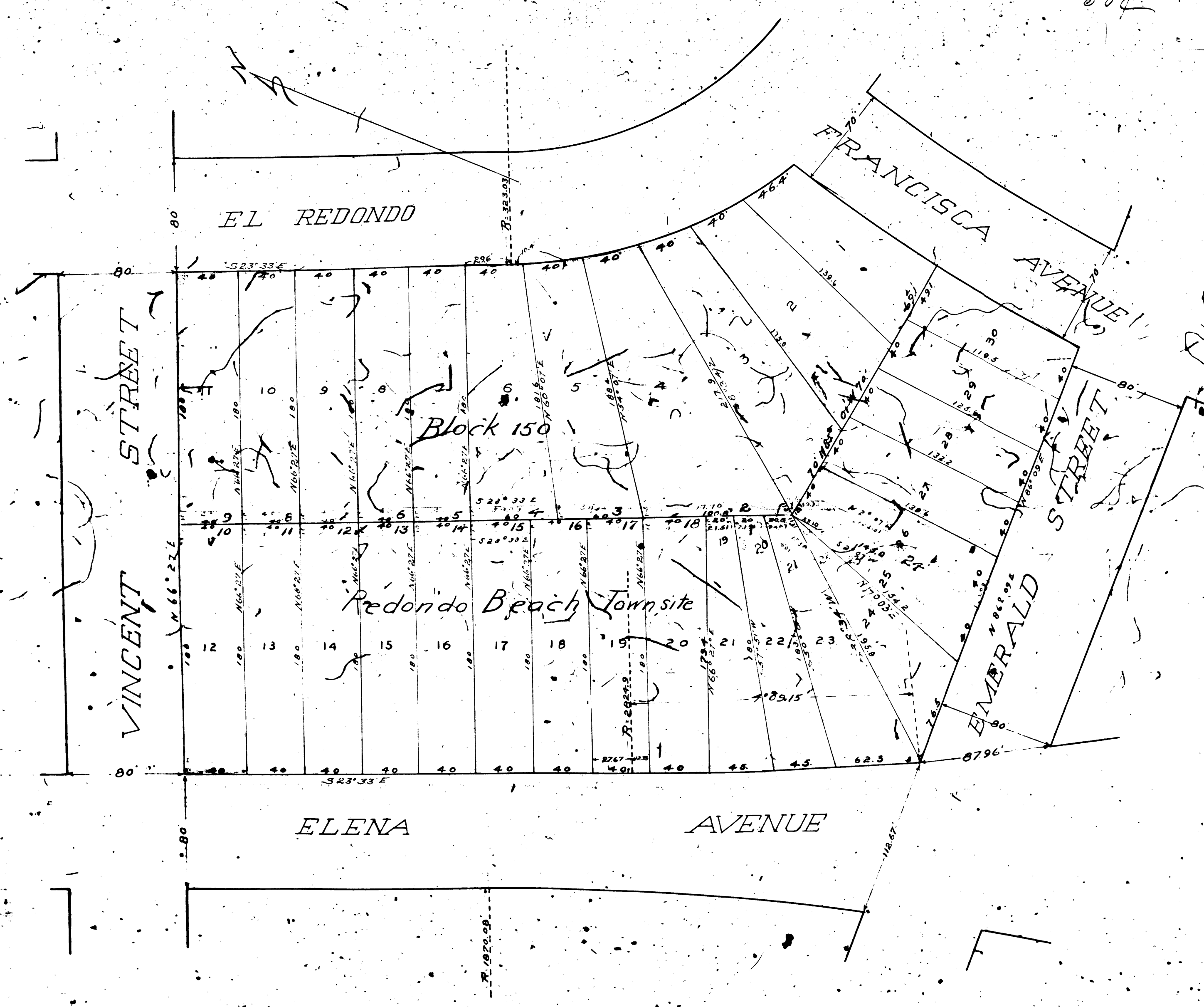


Filed  
S.D. Bartley  
Mar 2 1907  
9 2 PM

G.W. Taylor  
50¢



### DIAGRAM

Explaining the assessment district and the land to be taken for the opening of an alley in Block 150, Townsite of Redondo Beach. Each portion of lot or parcel of land and its dimensions. Each portion of lot taken or assessed is designated and described by numbers marked thereon in Red ink.

Here and figures in Black ink next to property lines show each the length of said line in feet. Other figures in Black ink show the numbers of lots.

Solid Black lines show original lot lines.

Red figures next to Red lines show length in feet of land taken.

Blue tinting show the land to be taken for the opening of said alley.

Yellow tinting show the boundary of the assessment district.

The diagram is drawn to the scale of 50 feet to 1 inch.

State of California } ss  
County of Los Angeles }  
City of Redondo Beach

I, S.D. Bartley, Clerk of the City of Redondo Beach, do hereby certify that this plat is a full, true, and correct copy of the plat of the commissioners in the following work to-wit:

To open an alley in the City of Redondo Beach Through Block 150 from the Southernly Line of Vincent Street to the Northernly line of Emerald Street of the uniform width of Twenty (20) feet as set forth in the resolution of intention No. 194

Said plat was adopted at a regular meeting of the Board of Trustees of the City of Redondo Beach on the 29th day of May 1905.

*S.D. Bartley*  
Clerk of the City of Redondo Beach

Recorded this day of 1907

City Engineer

