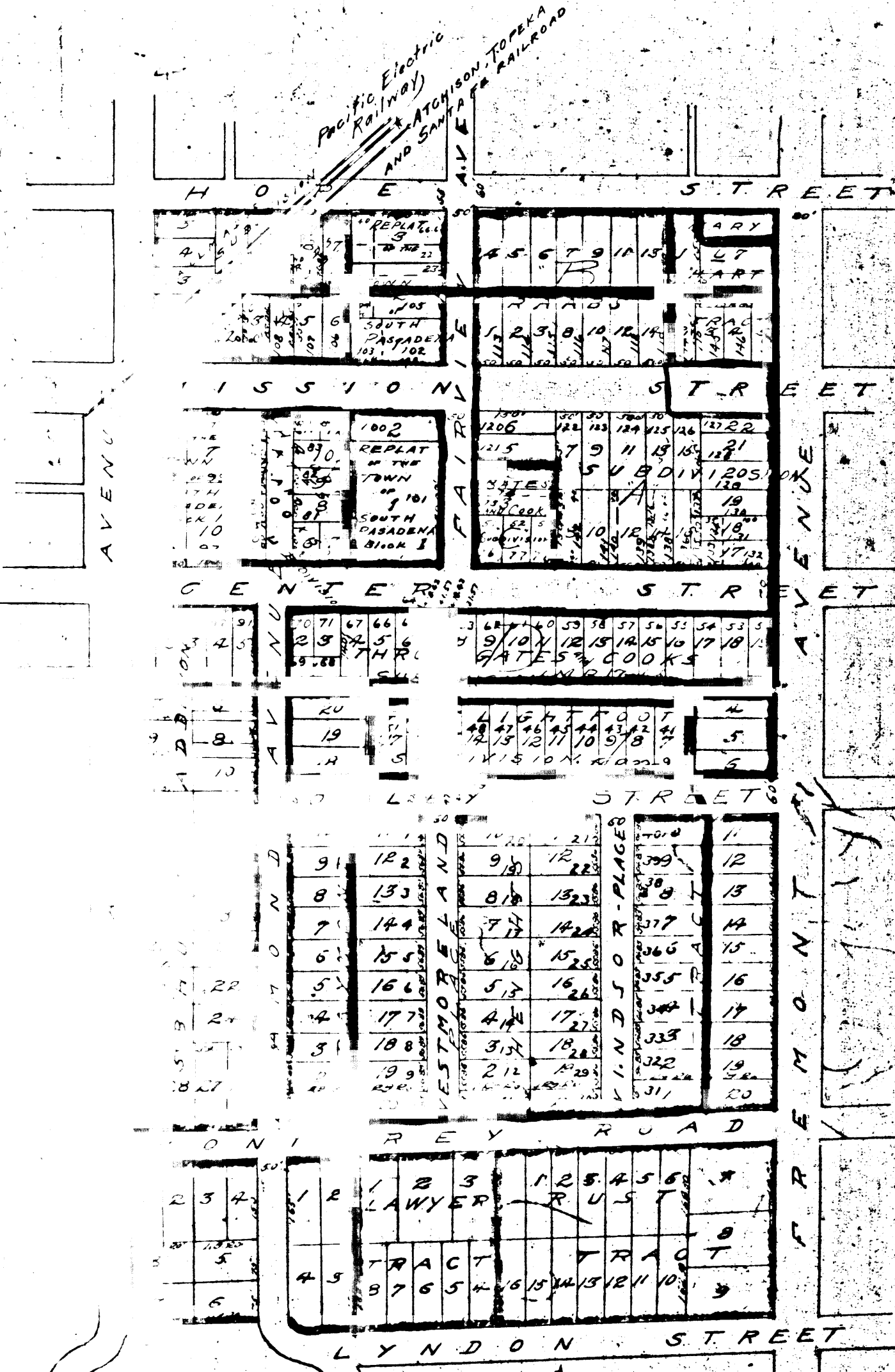


Index #8



MAP EXHIBITING  
 LANDS DEEMED NECESSARY TO BE TAKEN  
 TO CAUSE  
**WESTMORELAND PLACE**  
 TO BE OPENED AND EXTENDED  
 FROM OXLEY STREET TO CENTER STREET  
 AND EXHIBITING THE EXTERIOR BOUNDARIES OF THE DISTRICT OF  
 LANDS TO BE AFFECTED OR BENEFITED AND TO BE ASSESSED  
 TO PAY THE DAMAGES, COSTS AND EXPENSES THEREOF

Filed  
 T & T Co  
 Mar 31 1908  
 43 9 AM

G.W. Taylor  
 Secy

(23)

RED BOUNDARY LINES SHOW EXTERIOR BOUNDARIES OF ASSESSMENT DISTRICT.  
 RED FIGURES SHOW THE ASSESSMENT NUMBERS DESIGNATING EACH PARCEL OF  
 LAND AFFECTED OR BENEFITED OR TO BE ASSESSED.  
 YELLOW COLOR DESIGNATES LANDS TO BE TAKEN.  
 YELLOW FIGURES SHOW THE NUMBERS DESIGNATING THE PARCELS OF LAND  
 TO BE TAKEN.  
 THE SCALE OF THE DIAGRAM IS ONE INCH = 200 FEET.

I hereby certify that Resolution Number 100 declaring the intention to open Westmoreland Place as shown in the attached diagram was duly passed by the Board of Trustees of South Pasadena, at a regular meeting of said Board January 21, 1907. Witness my hand this 19th day of December 1907.

Clara W. Grunshaw - Clerk of the City of South Pasadena, California.

I hereby certify that Resolution Number 500 appointing as Commissioners, O.W. Croutt, R.D. List and W.A. Gillette to assess the benefits and damages for opening Westmoreland Place was duly passed by the Board of Trustees of South Pasadena, at a regular meeting of said Board April 1, 1907 and furthermore that the report of the above mentioned Commissioners was duly confirmed and approved by the Board of Trustees at a regular meeting of said Board - October 25th - 1907. Witness my hand this 13th day of December 1907.

Clara W. Grunshaw - Clerk of the City of South Pasadena, California.

This map finally confirmed and adopted by the Board of Trustees of South Pasadena, California was delivered to Frank R. Pierce, Street Superintendent of South Pasadena, California the 16th day of Dec - 1907.

Clara W. Grunshaw - Clerk of the City of South Pasadena, California.  
 Frank R. Pierce - Street Superintendent of South Pasadena, California.

Diagram or map showing the lands to be taken and extend Westmoreland Place and the lands benefited and to be assessed to pay the damages, costs and expenses thereof is hereby certified to be the one to accompany our report to the board of South Pasadena and to be a part of our official report.  
 O.W. Croutt } Commissioners for  
 W.A. Gillette } opening Westmoreland Place.

H. R. PIERCE, ONE OF THE BOARD OF THE CITY OF SOUTH PASADENA, CALIF.

