

Filed
Street Supt
Oct 16-1908
54

EE Jullard
536

DIAGRAM

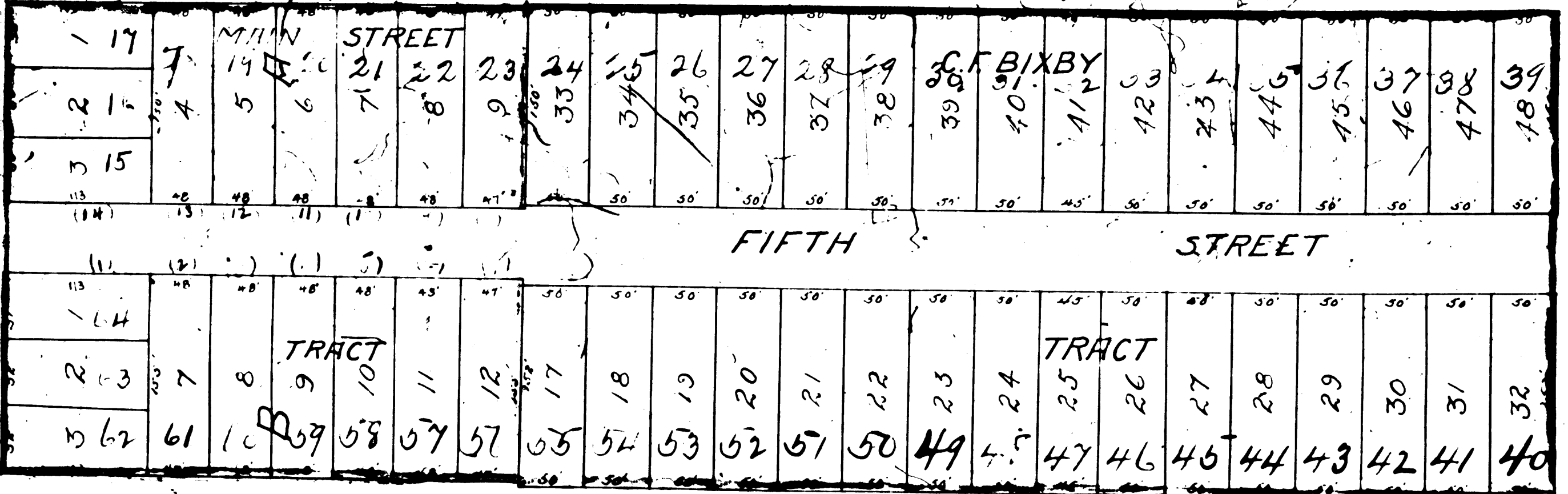
Showing the assessment district and the land to be taken for the opening and widening of Fifth Street in the City of Alhambra, California, from the Southerly line of Main Street to the Northerly line of Commonwealth Avenue, also showing the land assessed and the relative location of each district, block, lot, portion of lot, or parcel of land and their dimensions. Each district, block, lot, portion of lot, or parcel of land taken or assessed is designated and described by the number marked thereon in red ink.

Hereon the mark means feet. Figures in black ink next to property lines show each the length of said lines in feet, other figures in black ink show the numbers of the lots, solid black lines show lot lines, blue lines show land to be taken for the widening of said street, orange lining shows the boundaries of the assessment district, all other linings show the boundaries of subdivisions or portions of subdivisions named. The diagram is drawn to a scale of 100 feet to 1 inch.

I hereby certify that this plat was confirmed and adopted by the Board of Trustees of the City of Alhambra California in and by its resolution No. 117 adopted this 13th day of Oct 1908

MAIN STREET

COMMONWEALTH AVENUE



Vac 50' 5th St D. 30-149 Ord. 383
" " " " D. 36-77 O.R. 303-317

Index #8

RI 2162