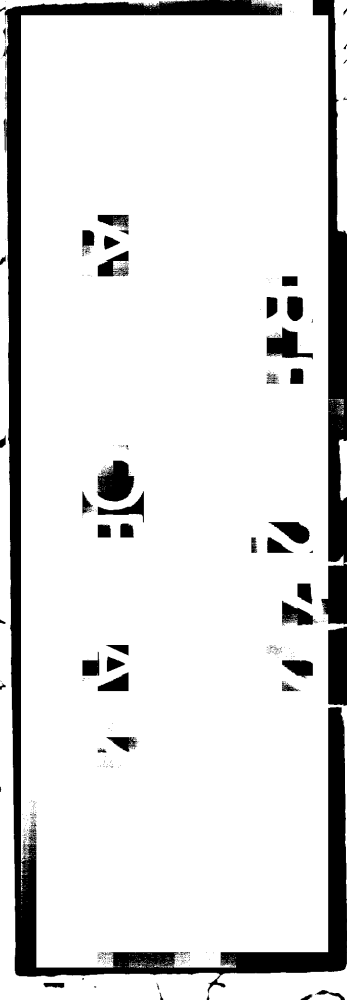


MAP showing SUBDIVISION

of a part of the
CITY of INGLEWOOD

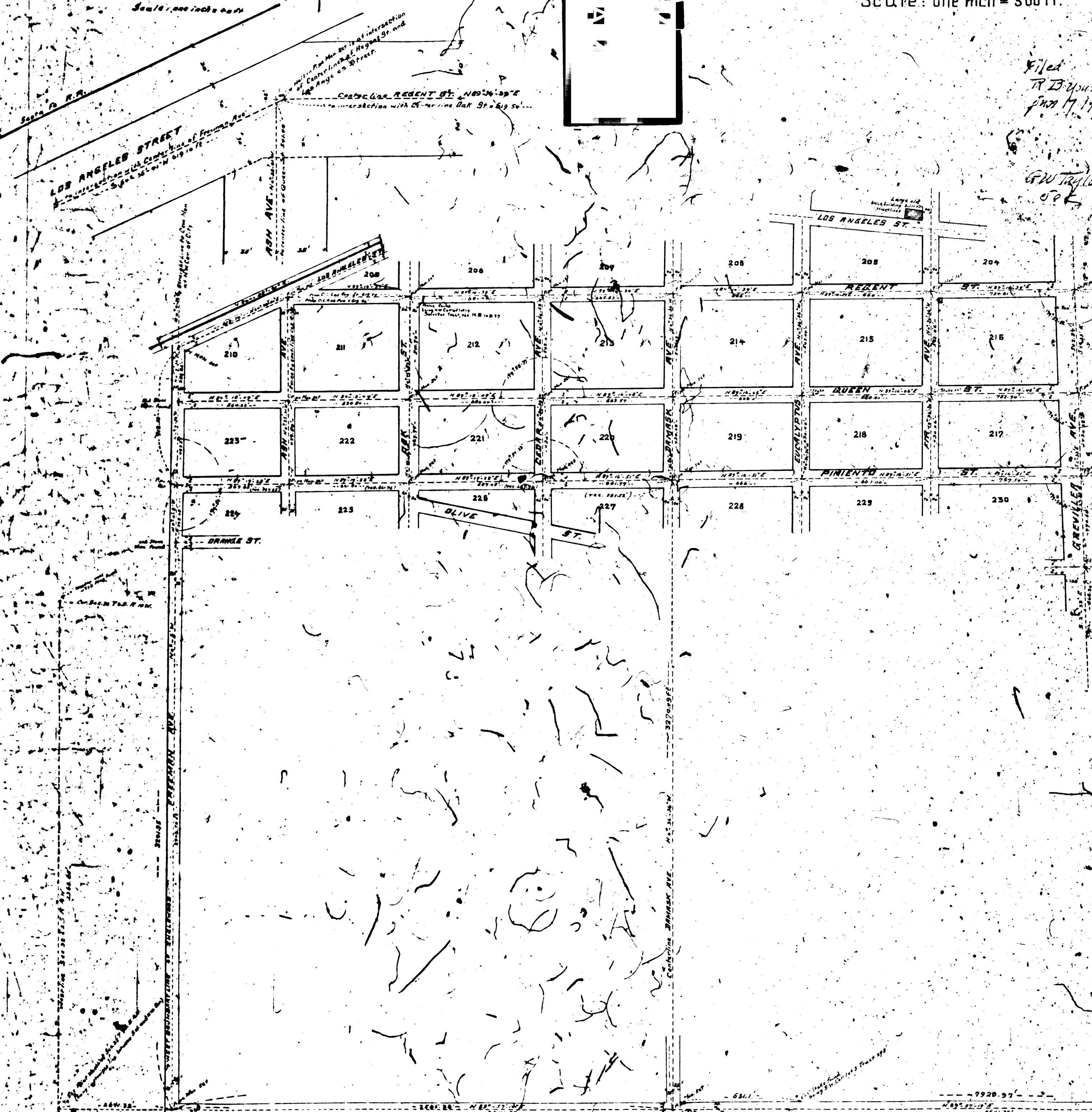
Scale: one inch = 300 ft.

Marginal Map No. 1
Scale: one inch = 300 ft.



Filed
R. D. Young
June 17, 1909

G. W. Taylor
City Clerk



Note: The bearings of all lines are based upon bearing of Eastline of Sec 33 T. 2 S. R. 11 E. which is recorded as being North.

State of California
County of Los Angeles
City of Inglewood S.S.

I hereby certify that the survey made of the lots of Greenville Ave. as shown by non-wealth signs indicated on the map hereto attached was made upon the direction of the Board of Trustees of the City of Inglewood and has been approved by them.

Given by the order of the Board of Trustees of the City of Inglewood, witness my hand and seal of the City of Inglewood this 17th day of June 1909.

[Signature]
City Clerk

State of California
County of Los Angeles
City of Inglewood S.S.

I hereby certify that this map showing the subdivision hereon was approved by the Board of Trustees of the City of Inglewood on the 17th day of June 1909 and is a true and correct copy of the same as shown on the City of Inglewood.

Witness my hand and seal of the City of Inglewood this 17th day of June 1909, done by order of the Board of Trustees.

[Signature]
City Clerk

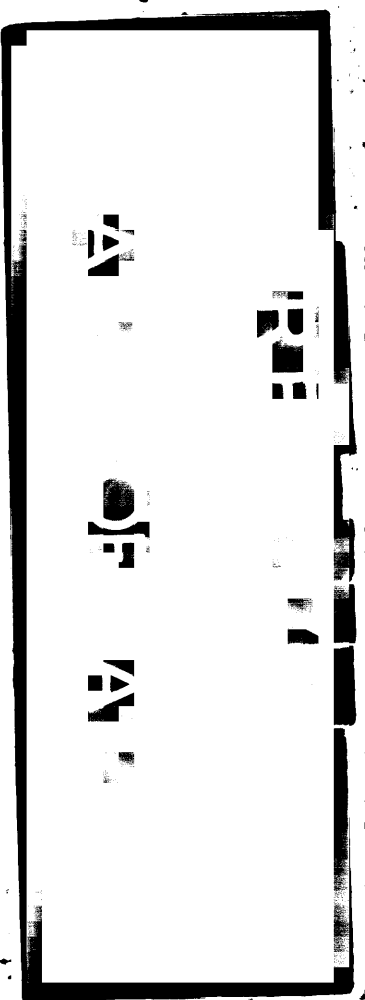
MAP showing SURVEY of a part of the CITY of INGLEWOOD, CAL.

Scale: one inch = 300ft.

Hermann Alder, City Engineer
June, 1909.

Filed
R.D. 2000-1
June 17, 1909
10 AM

G.W. Taylor
Soc.



State of California
County of Los Angeles
City of Inglewood S.S.

I hereby certify that this map showing the
lots and streets delineated thereon was approved by the Board of Trustees
of the City of Inglewood on the 12 day of June 1909
Witness my hand and seal of the City of Inglewood
this 12 day of June 1909, Mayor in order of Board of Trustees

[Signature]
City Clerk

Marginal Map No. 2
Scale: one inch = 400'

NUTWOOD ST. N 19-31-1/2 ST.

REDONDO ST.

NUTWOOD ST.