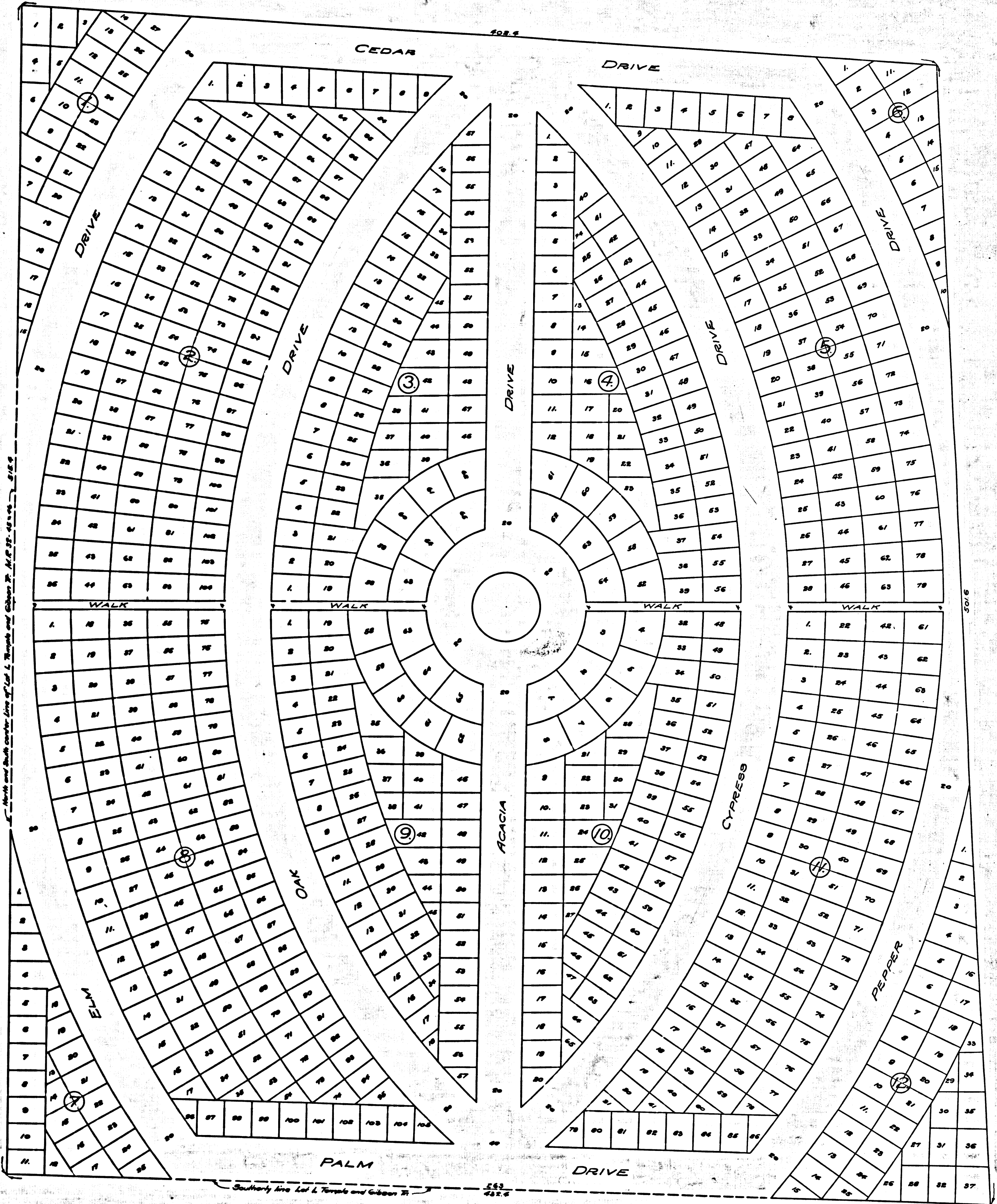


Woodlawn Cemetery

Being a Subdivision of the South West 5 Acres of the S.E. 1/4 of Lot L
of the Temple and Gibson Tract as recorded in Misc. Rec. Book 32 Page 45

Records of Los Angeles Co. Cal.

Surveyed Jan. 1909 By E.E. Hardman



R.F. 274

No 274
Filed in Recorder's Office
Aug 20 - 1909