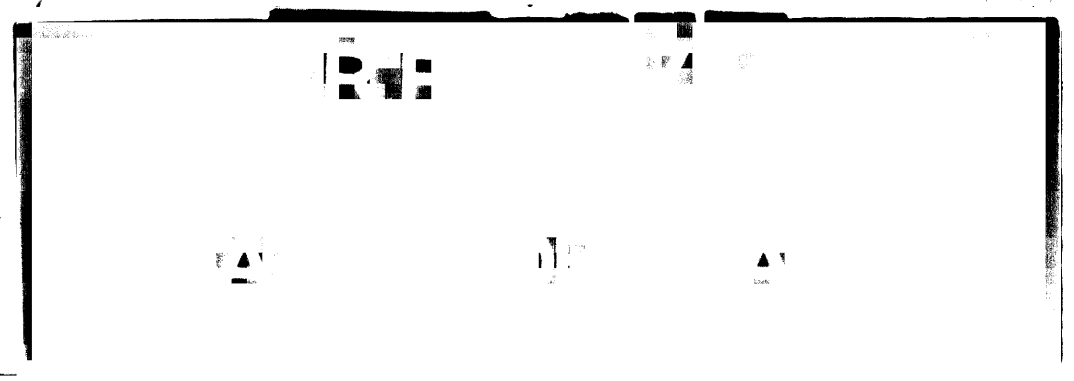
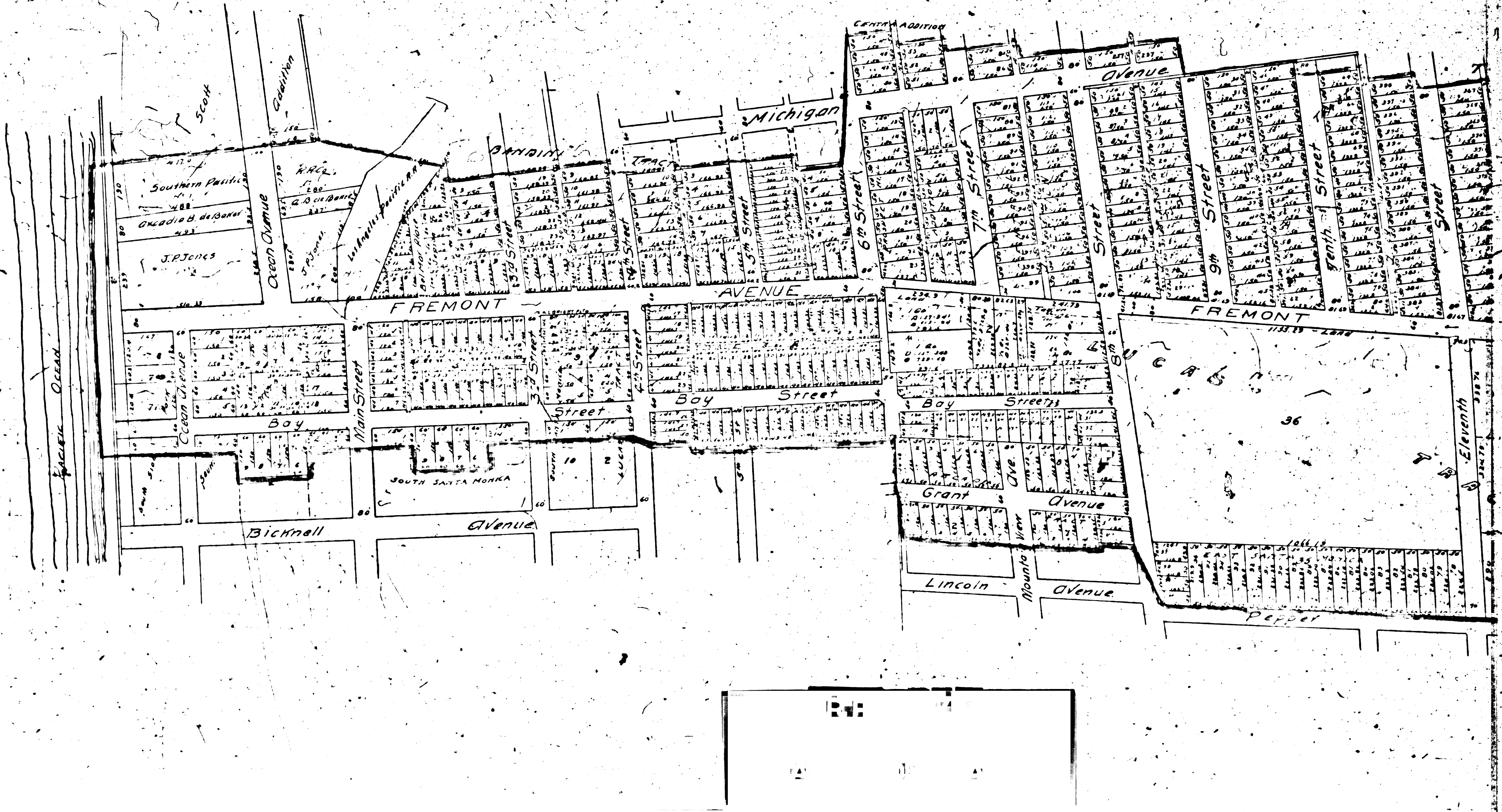


12	12	12	12	12	12	12	12	12	12
108	107	106	105	104	103	102	101	100	99

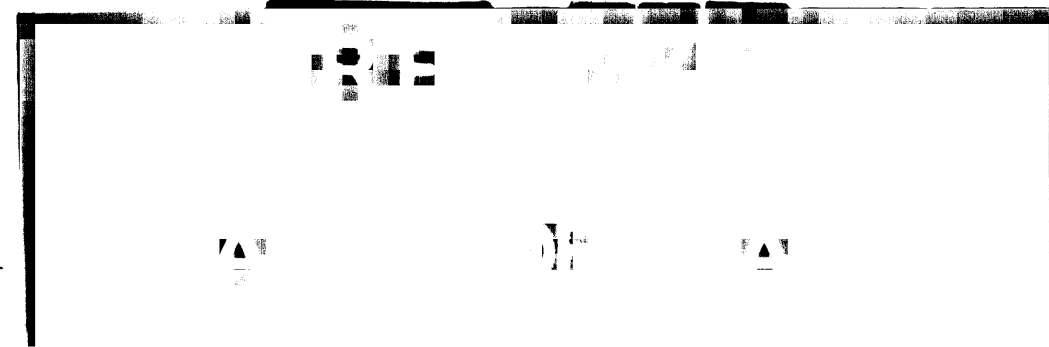
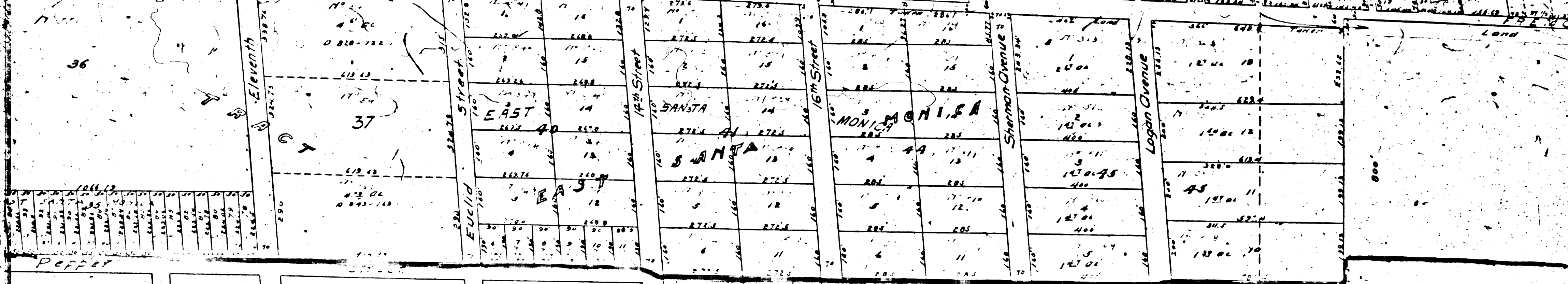


ENLARGED SCALE OF PORTION OF WOODLAWN CEMETERY FRONTING ON FREMONT AVENUE

100	101	102	103	104	105	106	107	108	109	110	111	112	113	114	115	116	117	118	119	120	121	122
12	12	12	12	12	12	12	12	12	12	12	12	12	12	12	12	12	12	12	12	12	12	12

123	124	125	126	127	128	129	130	131	132	133	134	135	136	137	138	139	140	141	142	143	144	145
12	12	12	12	12	12	12	12	12	12	12	12	12	12	12	12	12	12	12	12	12	12	12

146	147	148	149	150	151	152	153	154	155	156	157	158	159	160	161	162	163	164	165	166	167	168
12	12	12	12	12	12	12	12	12	12	12	12	12	12	12	12	12	12	12	12	12	12	12



State of California,
County of Los Angeles, } 33.
City of Santa Monica.

I, Wm. J. Taylor, City Clerk of the City of Santa Monica
do hereby certify this to be a true and correct copy of the
original Plat showing the Assessment District for the opening
and widening of Fremont Avenue, from Fourth Street to the
easterly city limits in said City, now on file in my office.
WITNESS my hand and official seal this 21st day of
January 1910.

Wm. J. Taylor
City Clerk

Filed
City Clerk of Santa Monica
Jan 26 1910
10am

INDEX 21
PLAT
SHOWING

Assessment District for the opening and widening of
FREMONT AVENUE
(formerly Front Street)
from 4th Street to the Easterly City Limits.
SANTA MONICA, CAL.

As ordered by special Ordinances 11th and showing the land taken for the opening and widening, and the land assessed, showing the relative location of each lot, portion of lot, and its dimensions as ascertained by the undersigned Commissioner. Each lot or part of lot, assessed is designated by a number, and corresponds with the list herewith annexed. Said lots are numbered in red ink to correspond with the red ink numbers in the assessment book. Figure 11th is used for the word number, for the word feet, and the mark "f" for the word feet. Figures in black ink next to the property list, show the length of said line in feet. Other figures in black ink show the number of the lot.

August 23rd 1909

Scale 1" = 200'

Thos. James
City Engineer



Aradia B. De Baker

J. J. Charnock

Ignacia Machado
386 053 100 Acre Tract
(Antonio Machado owner)

