

STATE OF CALIFORNIA
COUNTY OF LOS ANGELES
CITY OF SANTA MONICA

I, G.A. Murray, Clerk of City of Santa Monica, do hereby certify that this plat is a full, true and correct copy of the plat of the commissioners on the following public work to-wit: That Garfield Avenue in the City of Santa Monica, Calif., from the easterly line of Sixth Street to its present westerly terminus be opened and extended.
In testimony whereof I have hereunto set my hand and affixed the corporate seal of the City of Santa Monica this 23 day of January 1913.

Recorded this 14 day of December 1912

Street Superintendent

Filed
City Clerk of
Santa Monica
JAN 9 1913
2 PM

Wm Taylor
508

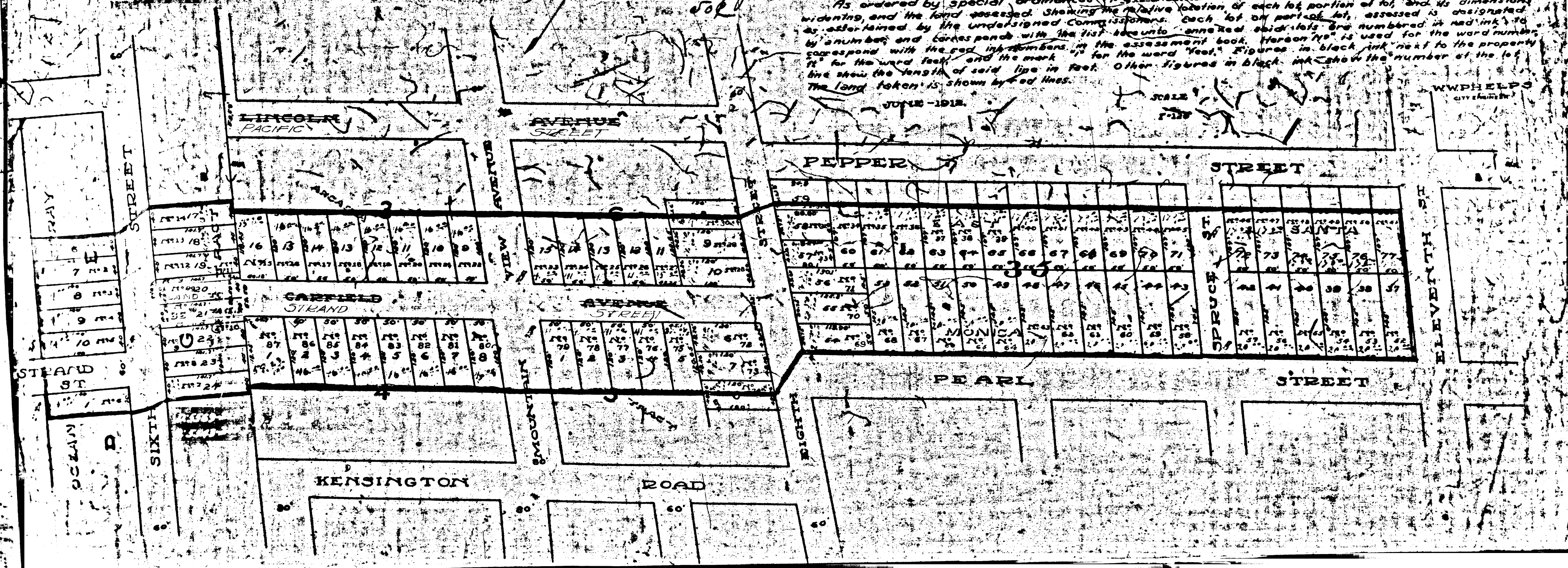
MAP OF DISTRICT TO BE ASSESSED FOR THE OPENING AND EXTENDING OF GARFIELD AVENUE FROM ITS PRESENT WESTERLY TERMINUS TO SIXTH STREET. SANTA MONICA, CAL.

As ordered by special ordinances no 212 and 223 showing the land taken for the opening and widening, and the land assessed. Showing the relative location of each lot portion of lot, and its dimensions as ascertained by the undersigned Commissioners. Each lot or portion of lot, assessed is designated by a number and carries ponds with the list hereunto annexed said lots are numbered in red ink to correspond with the red ink numbers in the assessment book. Hereon "fs" is used for the word number, "ft" for the word feet, and the mark "f" for the word feet. Figures in black ink next to the property line show the length of said line in feet. Other figures in black ink show the number of the lot. The land taken is shown by red lines.

JUNE 1912

SCALE

W.W. HELD
CITY ENGINEER



R.F 296