

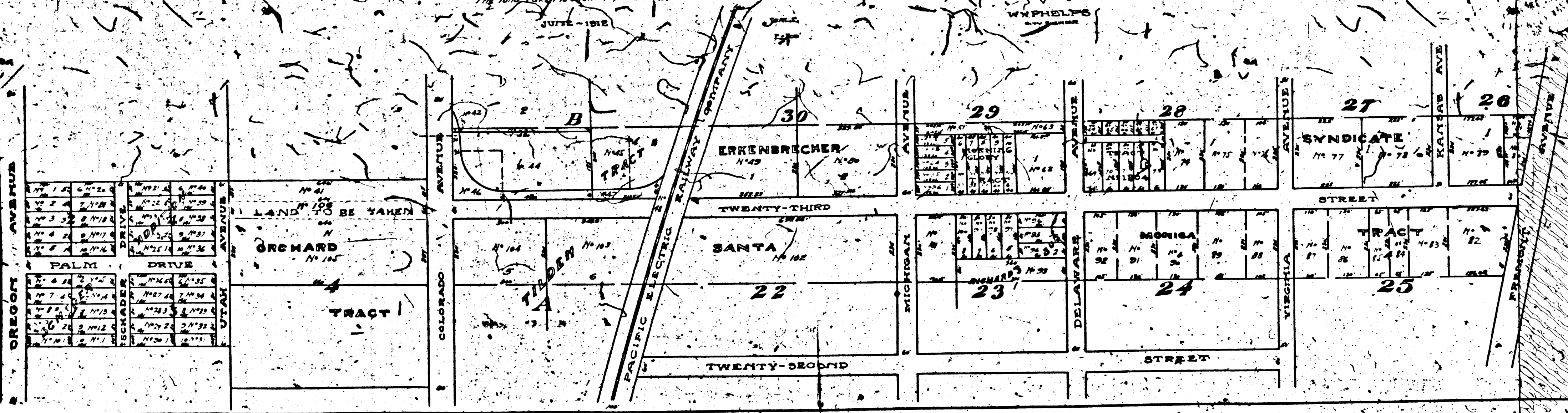
Filed
City Clerk of Santa Monica
JAN 15 1913
6 3827

DIAGRAM OF DISTRICT TO BE ASSESSED FOR THE OPENING AND EXTENDING OF TWENTY-THIRD STREET FROM THE NORTHERLY LINE OF COLORADO AVENUE TO THE SOUTHERLY LINE OF UTAH AVENUE SANTA MONICA, CALIFORNIA

STATE OF CALIFORNIA
COUNTY OF LOS ANGELES } 53.
CITY OF SANTA MONICA

I, G. A. Murray, Clerk of the City of Santa Monica do hereby certify that this plan is a full, true and correct copy of the plan of the commissioners on the subject public work herein. That Treaty, Deed Street in the City of Santa Monica, California, from the northerly line of Colorado Avenue to the southerly line of Utah Avenue, be opened and extended. In testimony whereof, I have hereunto set my hand and official seal at the corporate seat of the City of Santa Monica, this 11th day of June, 1913.

As ordered by special ordinances Nos. 224 and 305 opening land to be taken for the opening and extending, and the land assessed. Showing the relative location of each lot portion of lot, and its dimensions as ascertained by the undersigned Commissioners. Each lot or part of lot assessed, is designated by a number, and corresponds with the list hereunto annexed. Said lots are numbered in red ink to correspond with the red ink numbers in the assessment book. Hereon "F.S." is used for the word "feet", "L." for the word "line", and the mark "L." for the word "line". Figures in black ink next to the property line show the length of said line in feet. Other figures in black ink show the number of the lot. The land taken is shown by red lines.



1913