

Filed
City Clerk - Santa Monica
MAR 3 1913
9 A.M.

Wm Taylor
50¢

DIAGRAM

ASSESSMENT DISTRICT FOR THE OPENING AND WIDENING OF

SIXTH STREET

FROM THE SOUTHERLY LINE OF THE WAVE CREST TRACT TO THE SOUTHERLY LINE OF BAY STREET. ALSO FROM THE NORTHERLY LINE OF BAY STREET TO THE SOUTHERLY LINE OF FREMONT AVENUE.

OCTOBER 1912 SANTA MONICA, CAL.

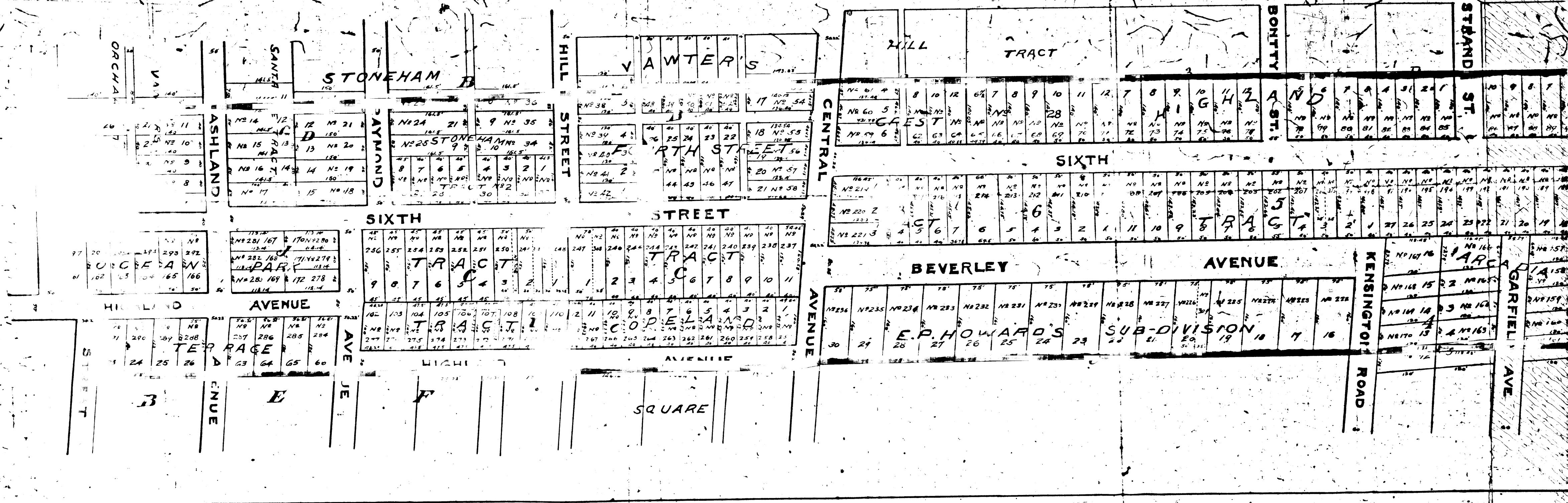
W. W. PHELPS
City Engineer

Scale - 1/2" = 120'

As ordered by special ordinances 1705 290 and 315, showing land to be taken for the opening and extending and the land assessed. Showing the relative location of each lot, portion of lot, and its dimensions as ascertained by the undersigned Commissioners. Each lot or part of lot assessed, is designated by a number, and corresponds with the list hereunto annexed. Said lots are numbered in red ink to correspond with the red ink numbers in the assessment book. Hereon 'NB' is used for the word number 'H' for the word feet, and the mark 'f' for the word feet. Figures in black ink next to the property line show the length of said line in feet. Other figures in black ink show the number of the lot. The land taken is shown by red lines.

J. C. Ford W. H. Potter C. W. Brown

I hereby certify the copy of Map for City as returned by the



I hereby certify the within to be a true and correct copy of Map for Opening and Widening Sixth Street as returned by the Commissioners.

R. Murray
City Clerk.

DIAGRAM

ASSESSMENT DISTRICT FOR THE OPENING AND WIDENING OF

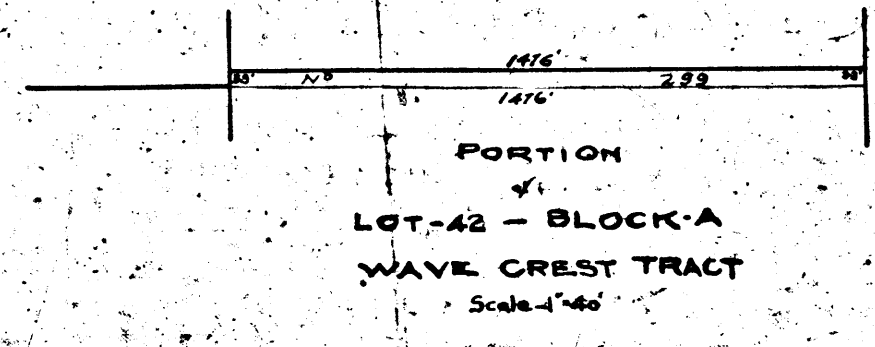
SIXTH STREET

FROM THE SOUTHERLY LINE OF THE WAVE CREST TRACT TO THE SOUTHERLY LINE OF BAY STREET. ALSO FROM THE NORTHERLY LINE OF BAY STREET TO THE SOUTHERLY LINE OF FREMONT AVENUE.

OCTOBER 1912 SANTA MONICA, CAL.

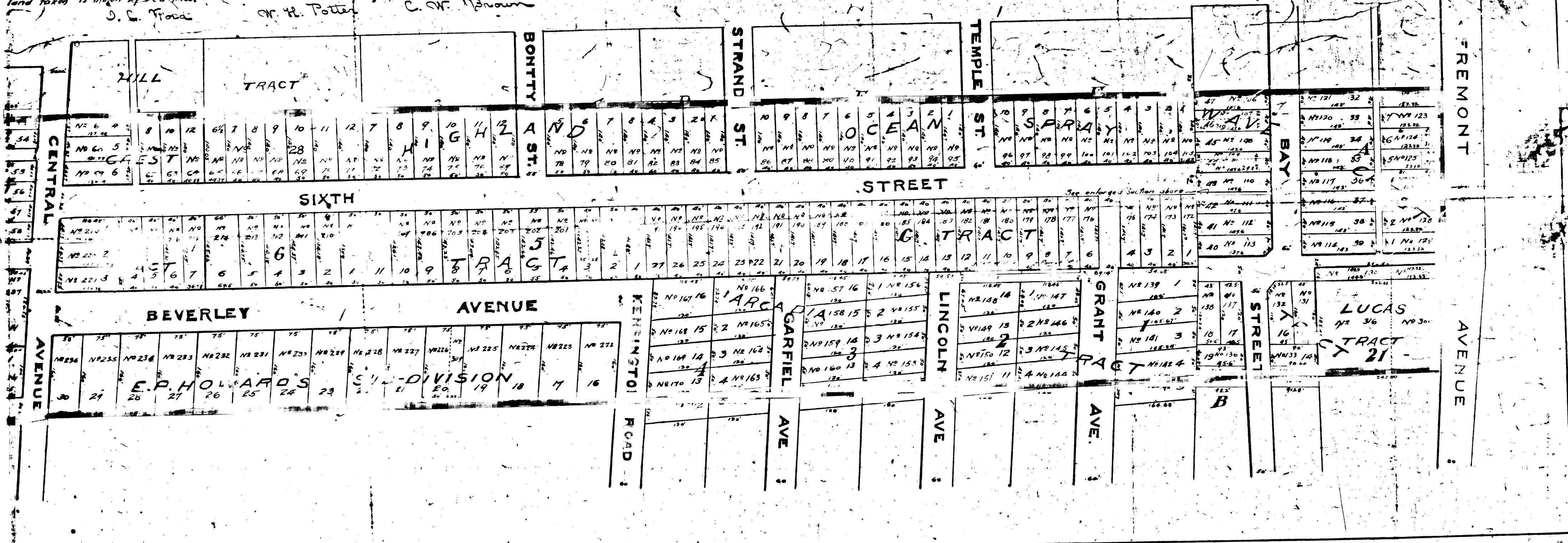
W. W. PHELPS
City Engineer.

Scale - 1" = 120'



Ordered by special ordinances Nos 290 and 318 showing land to be taken for the opening and extending the land assessed. Showing the relative location of each lot, portion of lot, and its dimensions as ascertained by the undersigned Commissioners. Each lot or part of lot assessed is designated by a number and corresponds with the list hereunto. Said lots are numbered in red ink to correspond with the red ink numbers in the assessment book. Hereon 'NR' is used for the word 'number' and 'ft' for the word 'feet', and the mark 'f' for the word 'feet'. Figures in black ink next to the property line show the length of said line in feet. Other figures in black ink show the number of the lot. Land taken is shown by red lines.

J. S. Flood W. R. Potter C. W. Brown



CENTRAL AVENUE

HILL TRACT

BONTTY

STRAND ST.

TEMPLE ST.

OCEAN STREET

GRANT AVE.

LINCOLN AVE.

GARFIELD AVE.

KENNINGSTON ROAD

BEVERLY AVENUE

E. P. HOLARDS DIVISION

BAY STREET

FREMONT AVENUE

LUCAS STREET

WAVE CREST TRACT