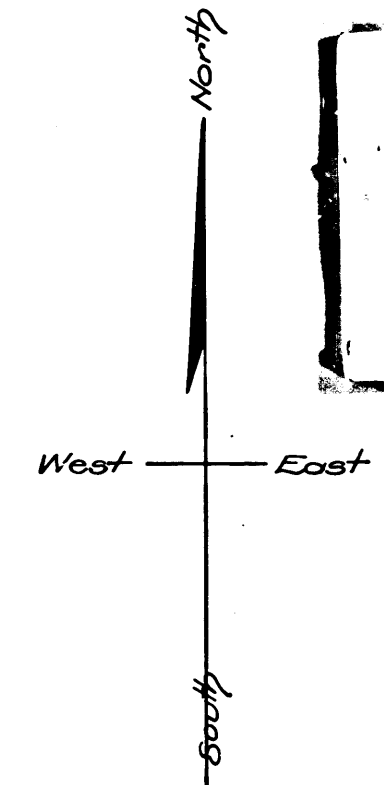


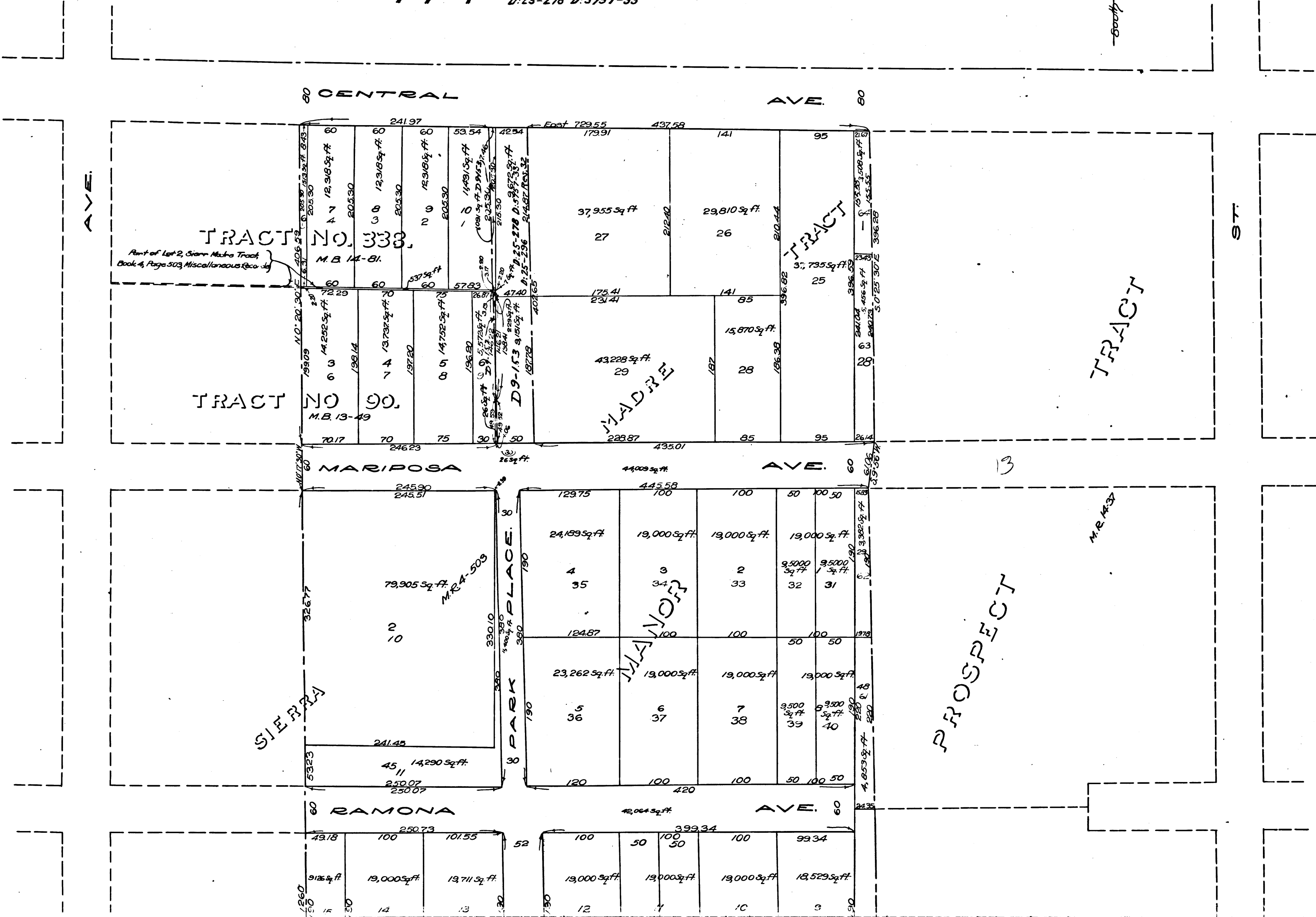
EXHIBIT 'A'

Plot showing lands to be taken for and district to be assessed to pay the expenses of opening Park Avenue in the City of Sierra Madre, California, between the Northernly line of Mariposa Avenue and the Southernly line of Central Avenue to a uniform width of fifty (50) feet; all as described in, and in accordance with Resolution of Intention No 30 of the Board of Trustees of said City of Sierra Madre, adopted October 24, 1912
 Wm. F. Bixby, C.E.
 City Engineer
 October 1912 Scale: 1 inch = 80 Feet

R.F. 307
 A1 OF A2



For deeds See D:5671-314 D:9-152
 D:5722-69 D:9-153
 D:5666-161 D:9-153
 Park Ave. opening- D:25-296 Res. 32
 " " " " D:25-278 D:5757-33



AVE.

ST

TRACT NO. 333
 M.B. 14-81

TRACT NO. 90
 M.B. 13-49

MADRE

TRACT

SIERRA

MADRONA

PROSPECT

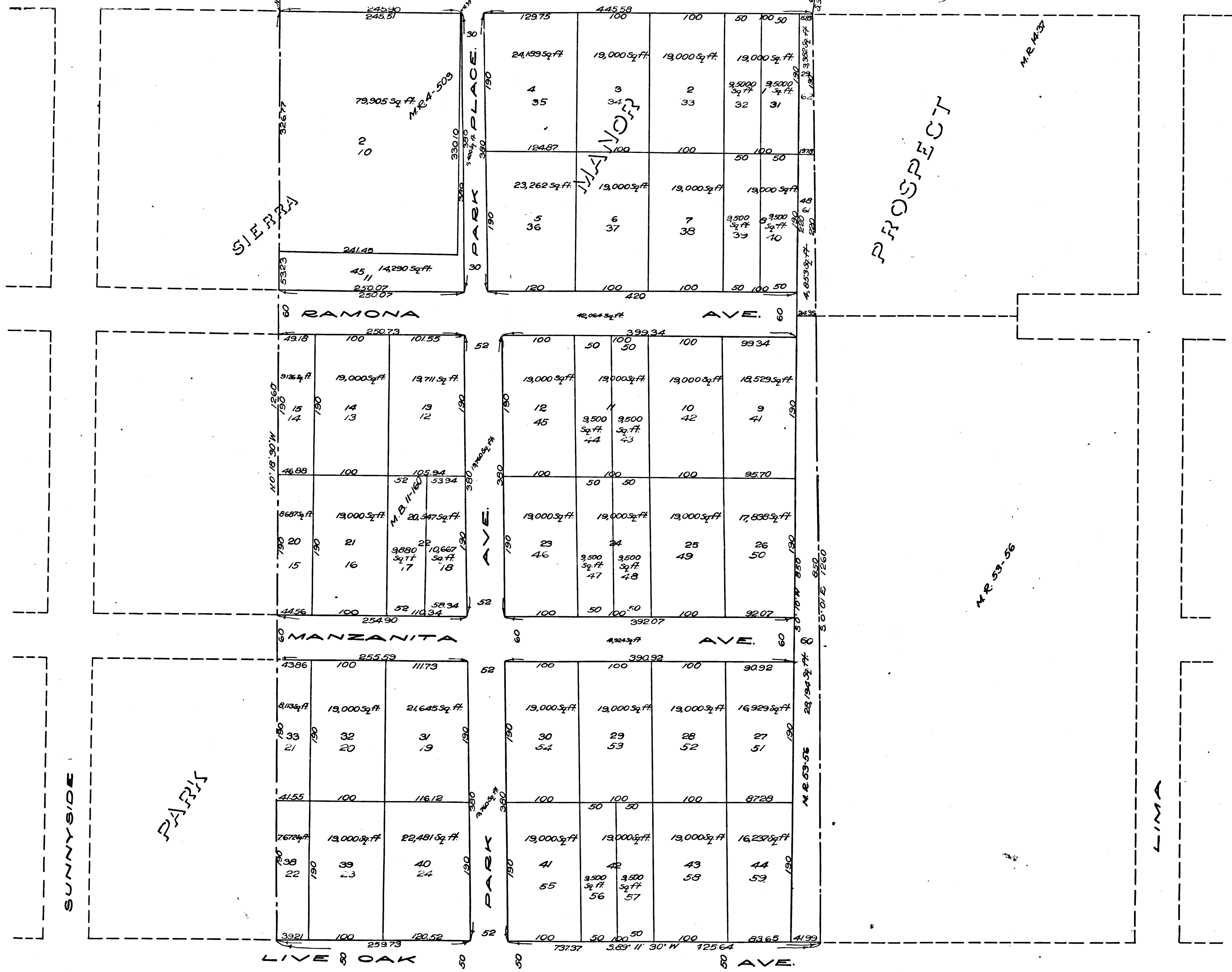
RAMONA AVE.

AVE.

PARK PLACE

1260
50

590



Filed Oct. 24 1913
 Recorder's Filed Map No 307

R.F. 307
 A2 OF A2