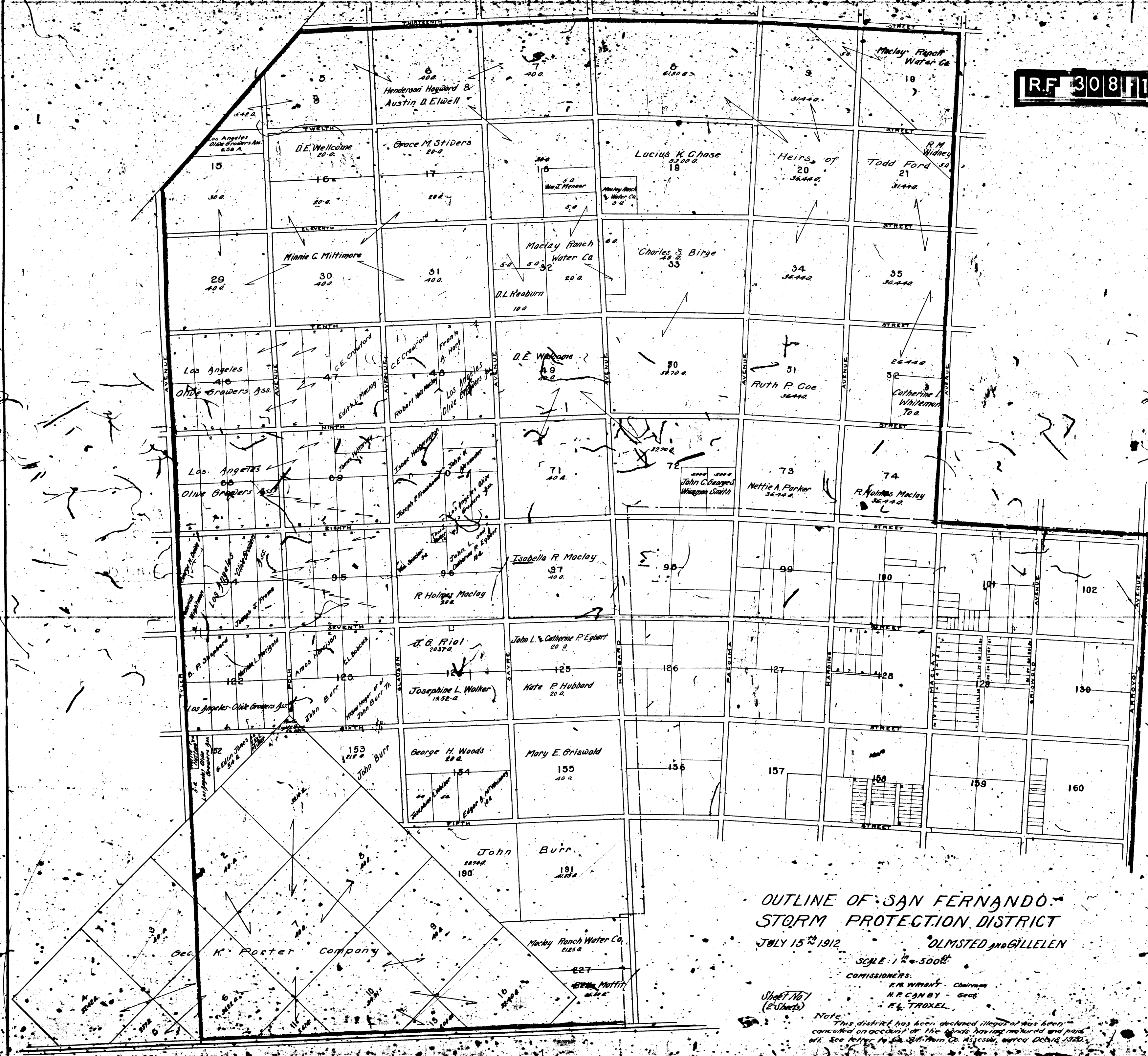


RF 30811



OUTLINE OF SAN FERNANDO
 STORM PROTECTION DISTRICT
 JULY 15th 1912

OLMSTED and GILLELEN
 SCALE 1" = 500'

COMMISSIONERS:
 R.M. WIMBY - Chairman
 H.R. CANBY - Secy
 F.L. TROXEL

Note: This district has been declared illegal and has been cancelled on account of the lands having matured and paid off. See letter to the San Fern. Co. Assessor, dated Oct. 16, 1920.

Sheet No. 1
 (2 Sheets)

R.F. 308-2

Note: This district was declared illegal as it was not levied on account of the bonds having matured and paid off. See letter to Co. Sur from Co. Assessor dated Dec. 16, 1910.

OUTLINE OF SAN FERNANDO STORM PROTECTION DISTRICT

JULY 15th 1912
DUNSTON & GILLEN
SCALE 1" = 200'
COMMISSIONERS
F. M. WRIGHT Chairman
H. R. CHASE Secy.
E. L. TRONDEL

Sheet No. 2
(2 Sheets)

Map 115

Map 115

