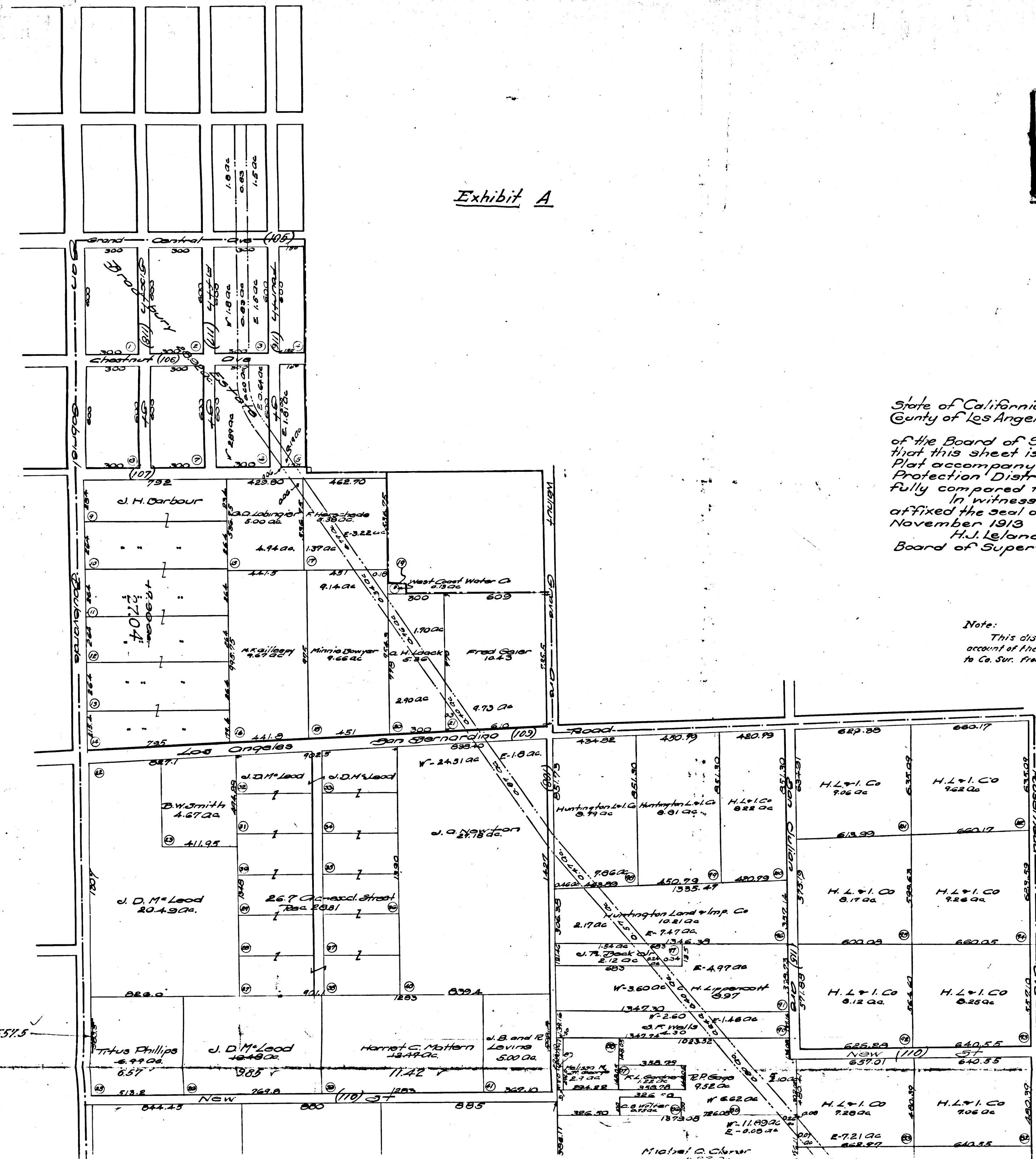


R.F. 310

A1 OF A2

Exhibit A



State of California }
County of Los Angeles }

I, H.J. LeJande, County Clerk and ex-officio Clerk of the Board of Supervisors of said County, do hereby certify that this sheet is a full, true and correct copy of the original Plat accompanying Report of Commissioners of San Gabriel Protection District on file in my office, and that I have carefully compared the same with the original.

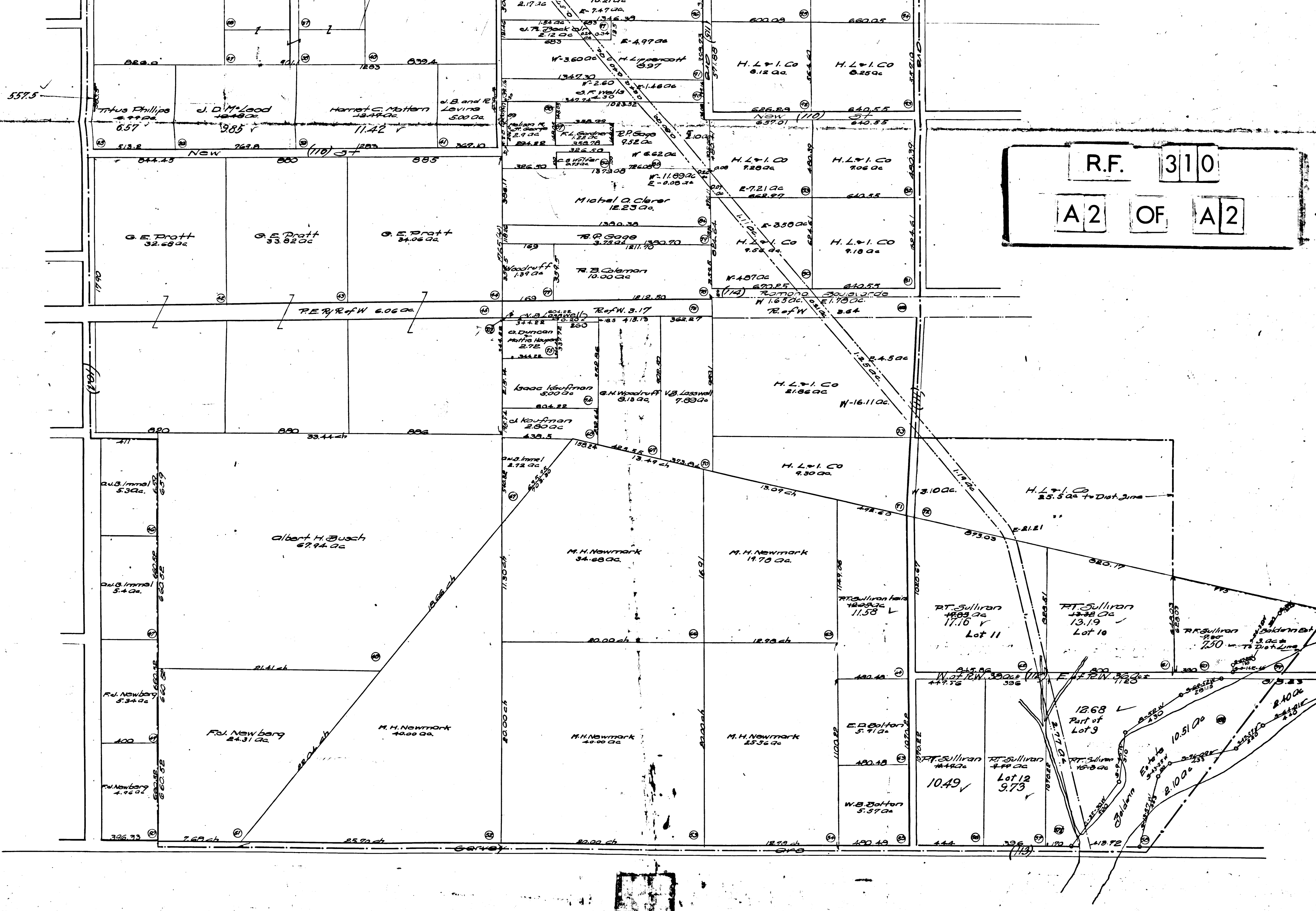
In witness whereof, I have hereunto set my hand and affixed the seal of the Board of Supervisors this 5th day of November 1913

H.J. LeJande, County Clerk and Ex-officio Clerk of the Board of Supervisors.
By A.M. McPherson, Deputy.

Note:
This district has been declared illegal or has been cancelled on account of the bonds having matured and paid off. See letter to Co. Sur. from Co. Assessor dated Dec. 18, 1920.

Surveyor's Note-- Right of way for Storm Drain is 60' wide. Data in blue copied from print on file in Recorder's Office.

R.F. 310
 A2 OF A2



Map of the San Gabriel District
 F.H. Almsted
 Scale 1/4" = 100'
 Recorder's File No. 310 1910