

# MAP SHOWING A PART OF HOLLYWOOD CEMETERY

Being a Re-Subdivision of Block 8  
per Filed Map N<sup>o</sup> 156 County Recorders Office

LOS ANGELES CO CALIFORNIA

BY  
DANIEL S HALLADAY C E

Scale: 1 in = 60 ft

JUNE  
1910

Map No. 317 Filed May 27 1914

*The Hollywood Cemetery Association & Corporation  
hereby declares that it is the owner of the lands shown on the  
surface of this map and that it consents to the subdivision & map  
as shown within the colored border line.*

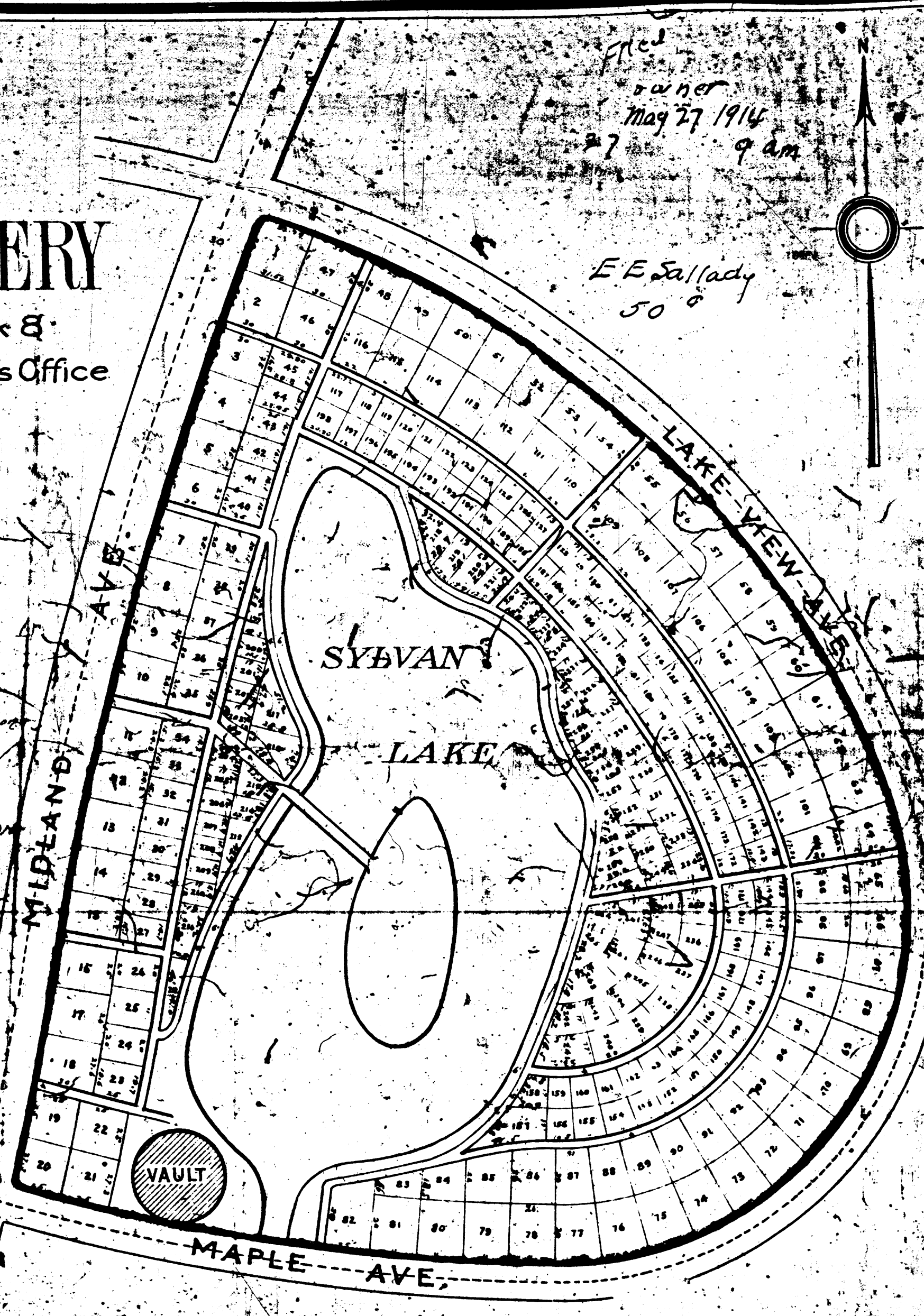
*THE HOLLYWOOD CEMETERY ASSOCIATION  
Harry H. Watson, President  
Harry H. Watson, Secy*

STATE OF CALIFORNIA,  
County of Los Angeles.

On this 26th day of May 1914  
before me, Paul Brantley  
Notary Public in and for said County of Los Angeles, State  
of California, residing therein, duly commissioned and  
qualified, personally appeared S. A. Wilson  
known to me to be the Vice-President  
of Hollywood Cemetery Association known to me  
to be the Secretary of

the Corporation that executed the within instrument, and  
declared to me that such Corporation executed the same  
In witness whereof, I have hereunto set my hand and  
affixed my official seal the day and year in this certificate  
expressed.

Paul Brantley  
Notary Public in and for Los Angeles County, State of California



INDEX

RF 317