

MAP OF A PORTION OF
ROSEDALE CEMETERY
BEING A RESUBDIVISION OF
A PORTION OF
BLOCK 2

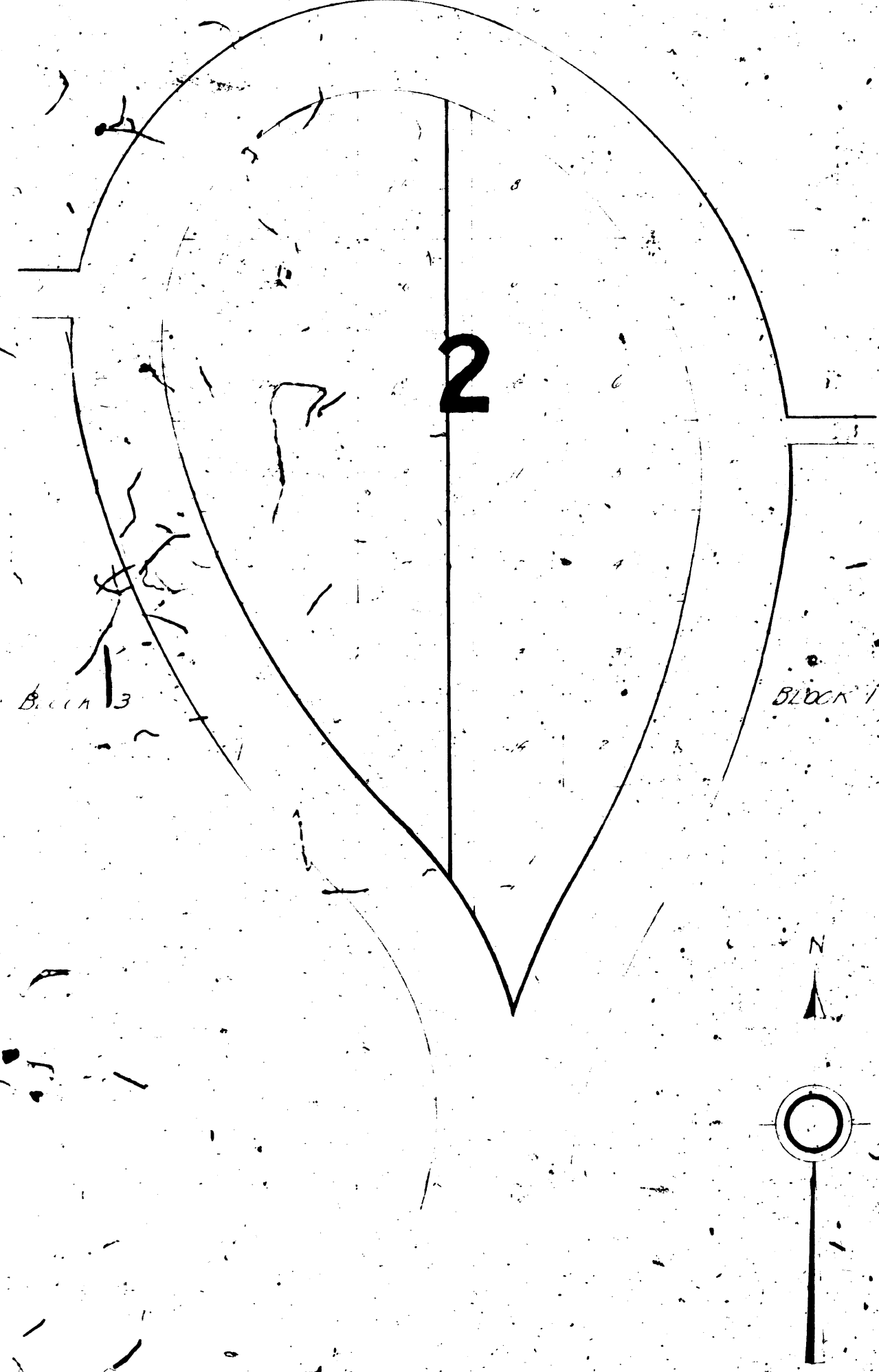
SMALL LOTS 30 FEET
AUGUST, 1904
DANIEL SHILLBURY
CITY ENGINEER

The Rosedale Cemetery Association, a corporation, hereby
declares that it is the owner of the lands shown on the annexed
map and that it caused said subdivision to be made as shown
within the colored border.

The Rosedale Cemetery Association.

John R. Haynes

Wm. H. H. [unclear]
Asst. Secretary



R.F. 319