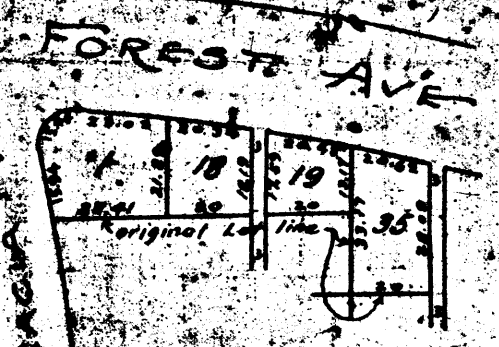
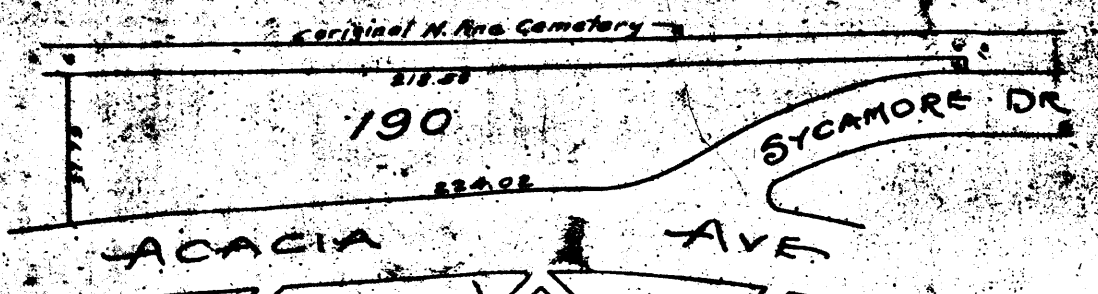


REPLAT PORTIONS
SECS A, C, D, K
FOREST LAWN

April 1915

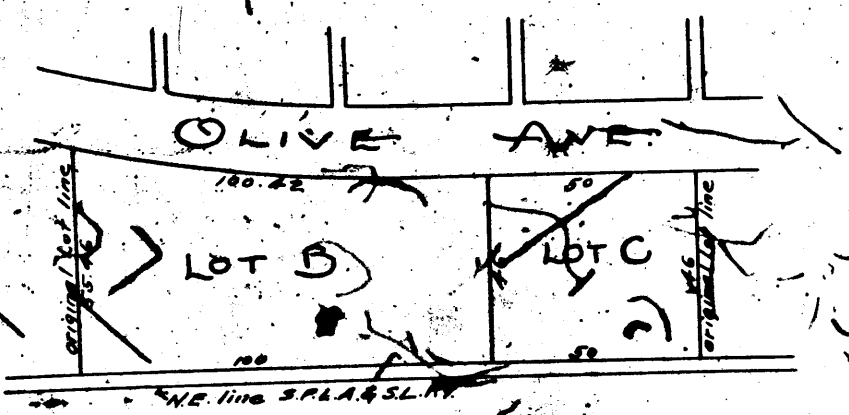


Replat of
LOTS 1, 18, 19, 35
SEC K

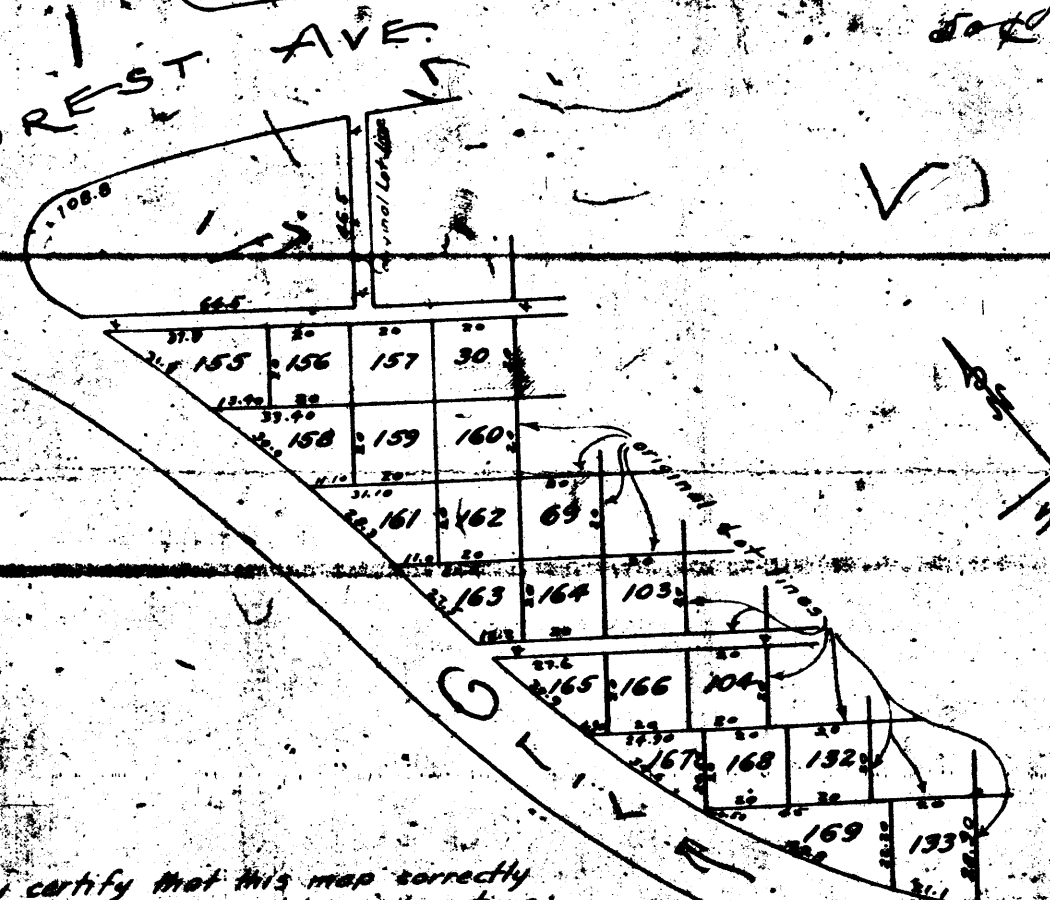


Replat of
LOT 190
SEC D

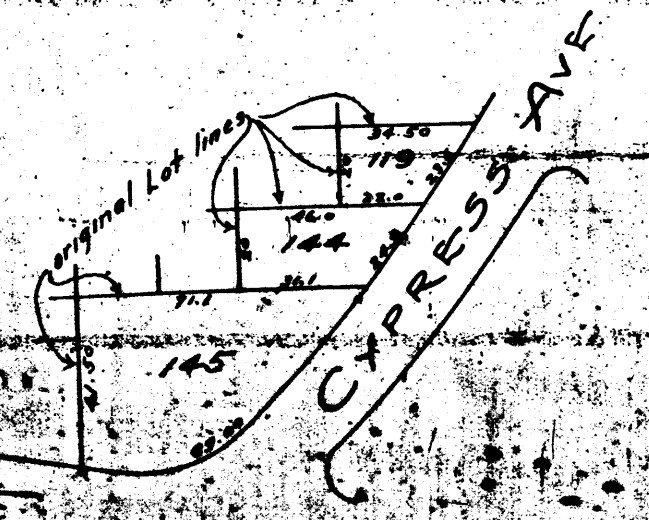
Filed
Forest Lawn Com. Dec
MAY 17 1915
22 10 AM
G.W. Taylor
Sec



Division of
LOTS B & C
SEC A



Replat of
LOTS 1, 30, 69, 103, 104
119, 132, 133, 144, 145
SEC C



"We hereby certify that this map correctly shows the streets of the several lots in the sections mentioned in the titles thereof, and that we caused such map and replat to be made, as and for portions of the Forest Lawn Cemetery Association that's property, used for Cemetery purposes."

FOREST LAWN CEMETERY ASSOCIATION
President
Secretary
May 17, 1915

Recorders

RF 328