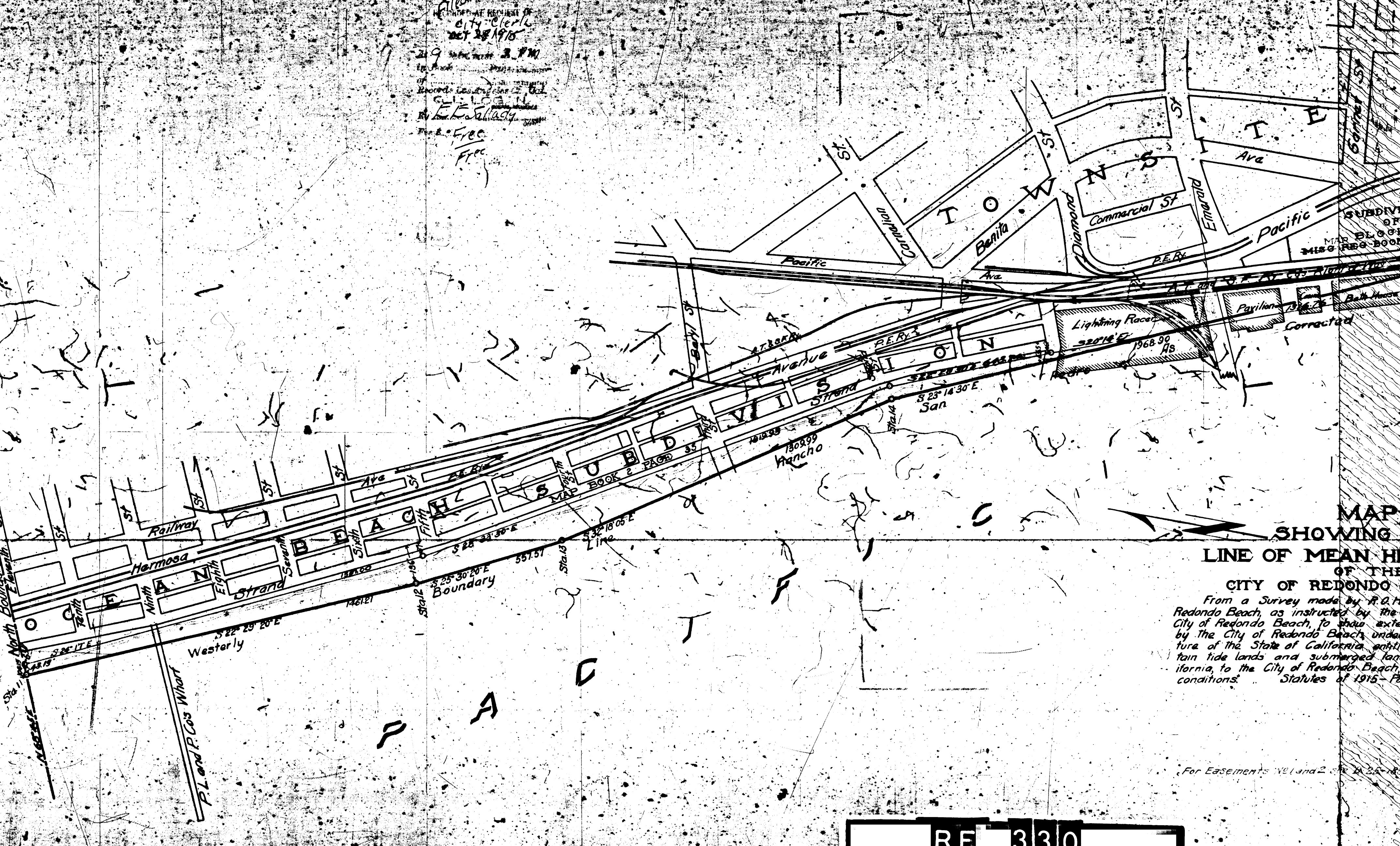


Filed
 COUNTY CLERK
 City of Redondo Beach
 OCT 28 1915
 2:19 P.M.
 By E. E. Salady
 Fee \$.00
 Free

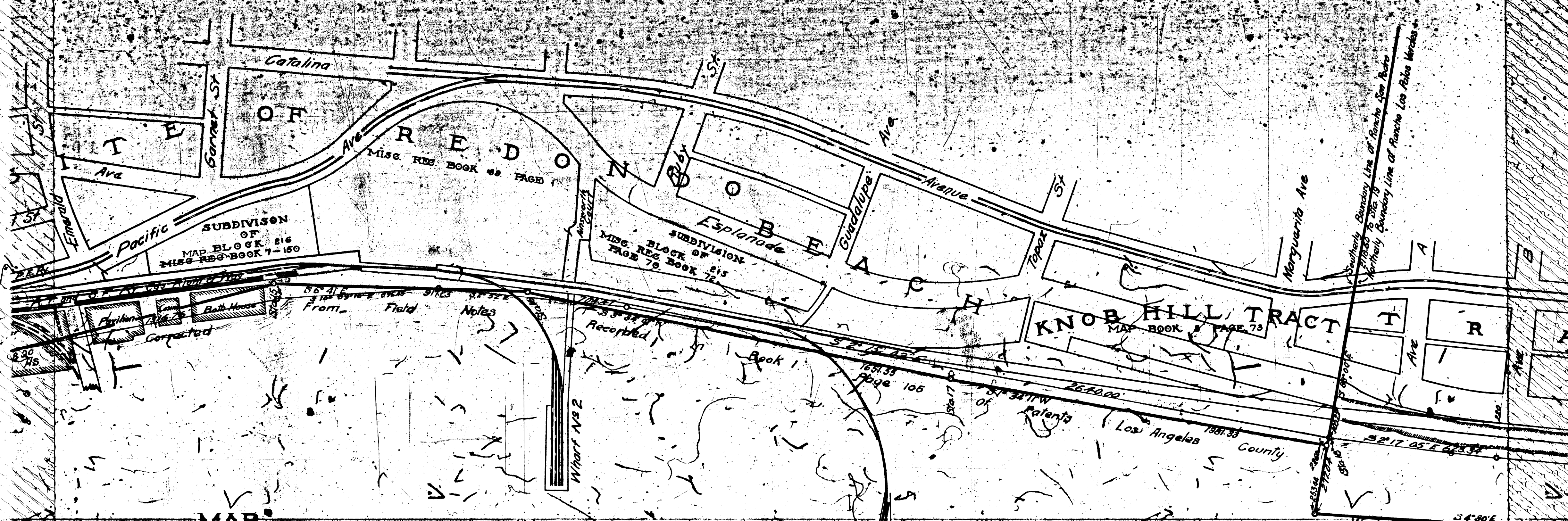
North Boundary Line of City of Redondo Beach
 San Pedro
 Boundary Line of Rancho



MAP
SHOWING
LINE OF MEAN HIGH
OF THE
CITY OF REDONDO
 From a Survey made by R. D. Mc
 Redondo Beach, as instructed by the
 City of Redondo Beach, to show extent
 by the City of Redondo Beach under
 ture of the State of California, while
 tide lands and submerged lands
 California, to the City of Redondo Beach,
 conditions. Statutes of 1915- Pa

R.F. 330
 A1 OF A3

For Easements No. 1 and 2, see p. 25-26



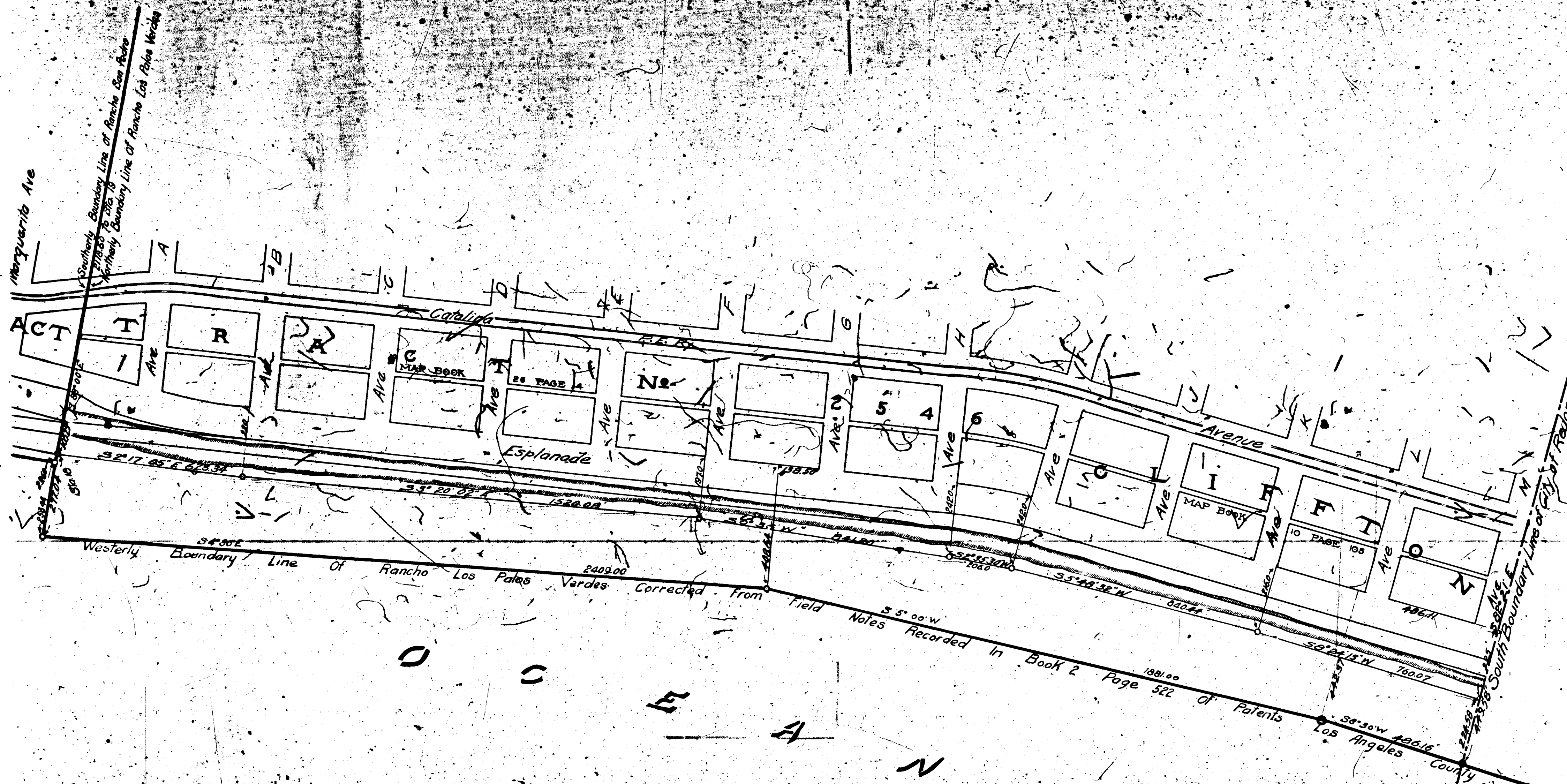
MAP
SHOWING THE
LINE OF MEAN HIGH WATER
OF THE
CITY OF REDONDO BEACH CAL

From a Survey made by R.O. Hanson City Engineer of Redondo Beach, as instructed by the Board of Trustees of said City of Redondo Beach, to show extent of tide land acquired by the City of Redondo Beach, under an Act of the Legislature of the State of California entitled, "An Act granting certain tide lands and submerged lands, of the State of California, to the City of Redondo Beach, upon certain trusts and conditions." Statutes of 1915 - Page 62.

Note — Line indicates the westerly Boundary line of Ranches San Pedro and Los Palos Verdes
 — Line indicates an average line of Mean High Water July 1915

For Easements No 1 and 2 see D:25-188 D: 6764-91 D.M. 6764-94

R.F. 330
A2 OF A3



R.F. 330
A3 OF A3