

MAN MILL

ROAD

LOT C

MYRTLE

ROSE

ROSE

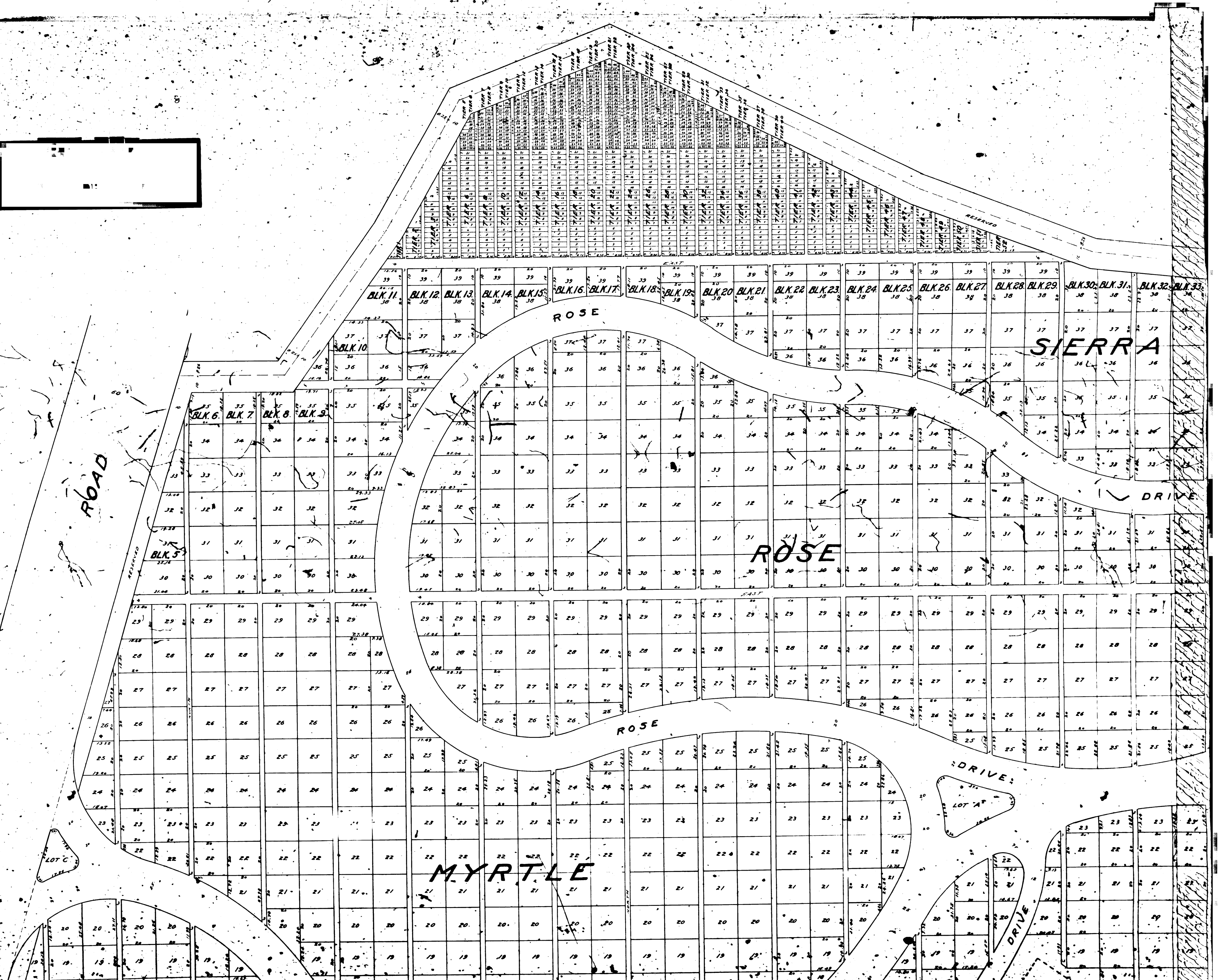
SIERRA

DRIVE

DRIVE

LOT A

DRIVE



WORKMAN MILL

LOT C

LOT A

ROSE

MYRTLE

IVY

MAUSOLEUM SITE

SUNSET

DRIVE

HELIOTROPE

SUNSET

BLK. 1

BLK. 2

BLK. 3

BLK. 4

BLK. 5

BLK. 6

BLK. 7

BLK. 8

BLK. 9

BLK. 10

BLK. 11

BLK. 12

BLK. 13

BLK. 14

BLK. 15

BLK. 16

BLK. 17

BLK. 18

BLK. 19

BLK. 20

BLK. 21

BLK. 22

BLK. 23

BLK. 24

BLK. 25

BLK. 26

BLK. 27

BLK. 28

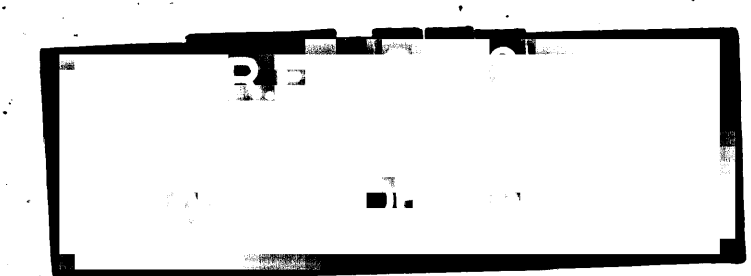
BLK. 29

BLK. 30

BLK. 31

BLK. 32

BLK. 33



BLK. 34	BLK. 35	BLK. 36	BLK. 37	BLK. 38	BLK. 39
37	37	37	37	37	37
36	36	36	36	36	36
35	35	35	35	35	35
34	34	34	34	34	34
33	33	33	33	33	33
32	32	32	32	32	32
31	31	31	31	31	31
30	30	30	30	30	30
29	29	29	29	29	29
28	28	28	28	28	28
27	27	27	27	27	27
26	26	26	26	26	26
25	25	25	25	25	25
24	24	24	24	24	24
23	23	23	23	23	23
22	22	22	22	22	22
21	21	21	21	21	21
20	20	20	20	20	20
19	19	19	19	19	19
18	18	18	18	18	18
17	17	17	17	17	17
16	16	16	16	16	16

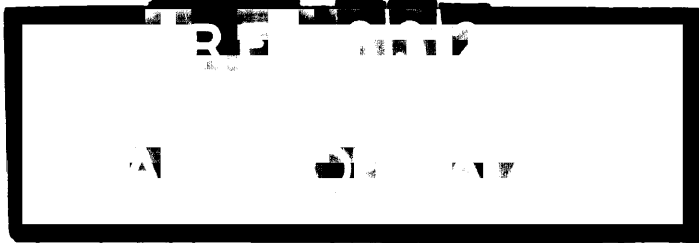
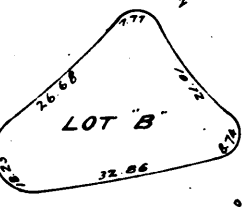
MOUNTAIN VIEW

GRAND VIEW

SUNSET

DRIVE

DRIVE



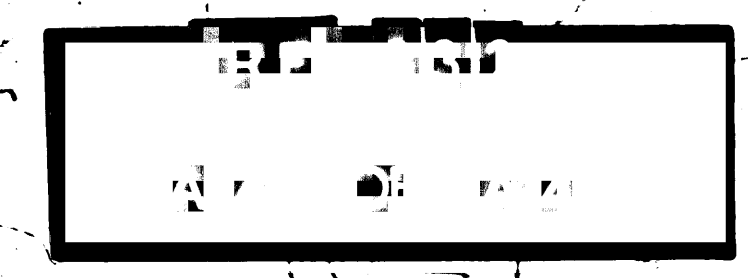
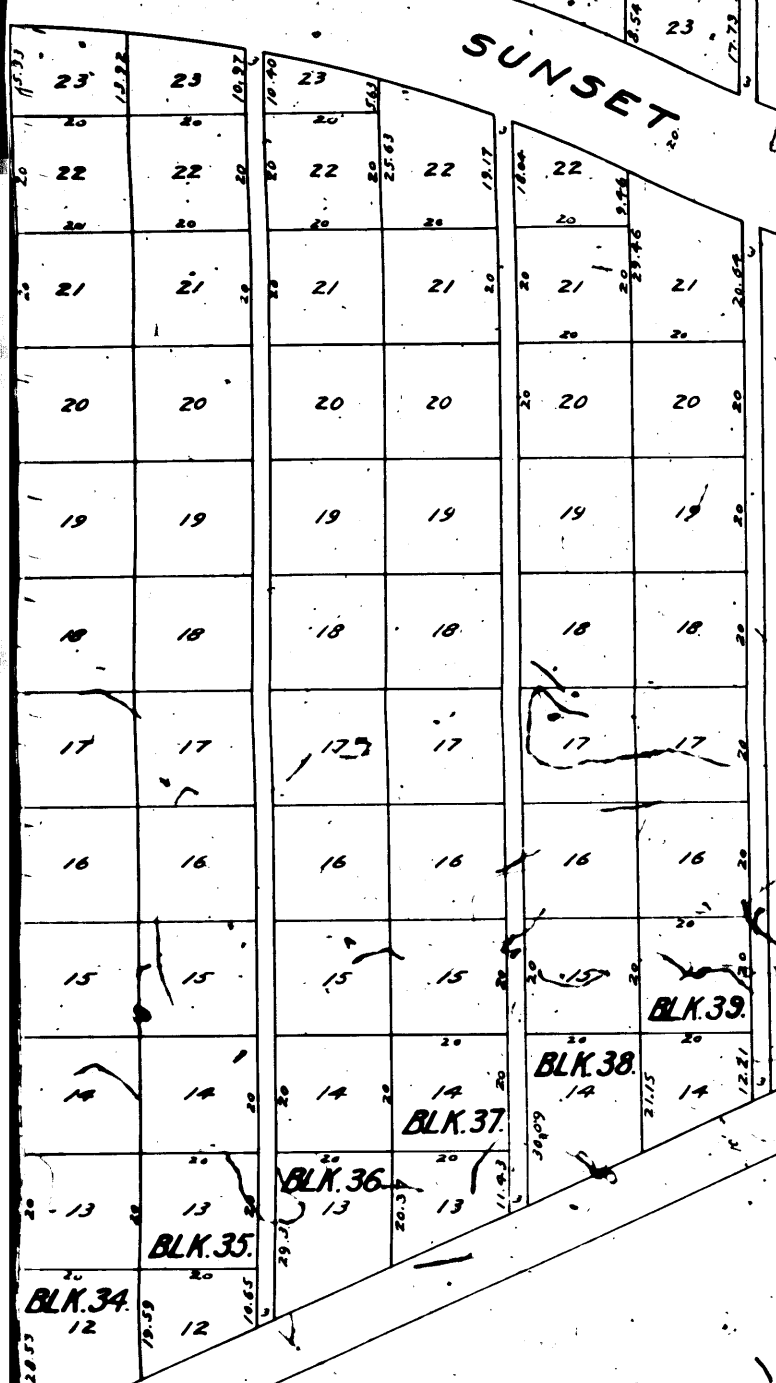
GRAND-VIEW

SUNSET

DRIVE

LOT B

SUNSET



MAP OF

WHITTIER HEIGHTS CEMETERY

LOS ANGELES COUNTY

Whittier Heights Cemetery is a subdivision of Sections Sierra, Rose, Myrtle, Ivy, and part of Sunset, lots 21 & C of Whittier Heights Cemetery as shown on Recorder's Filed Map No. 331.

W. M. JONSON - SURVEYOR
F. B. GIBSON - LANDSCAPE ENGINEER

SCALE 1" = 20'

Recorder's Filed Map No. 332

A. H. Gregg - Owner