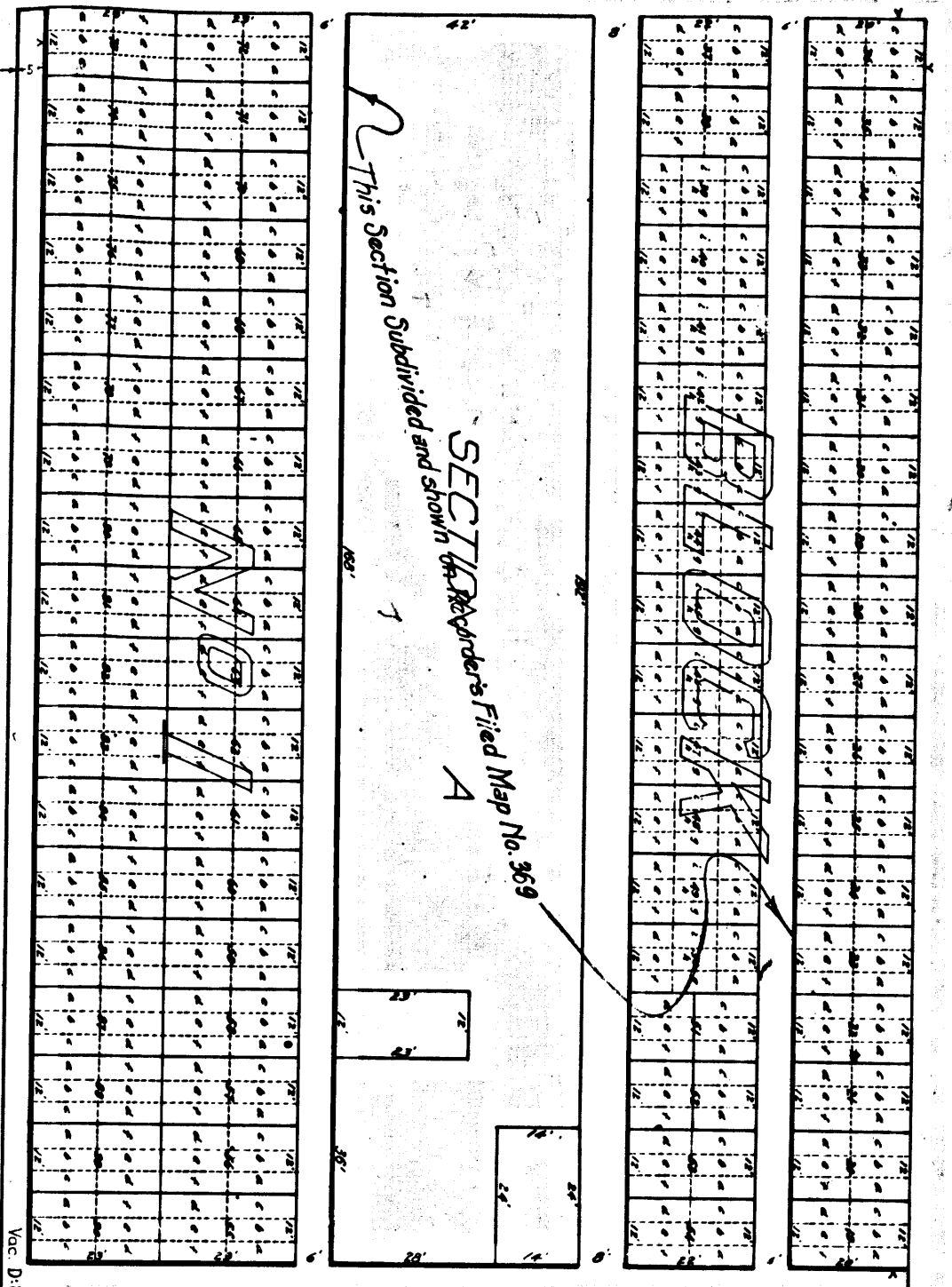
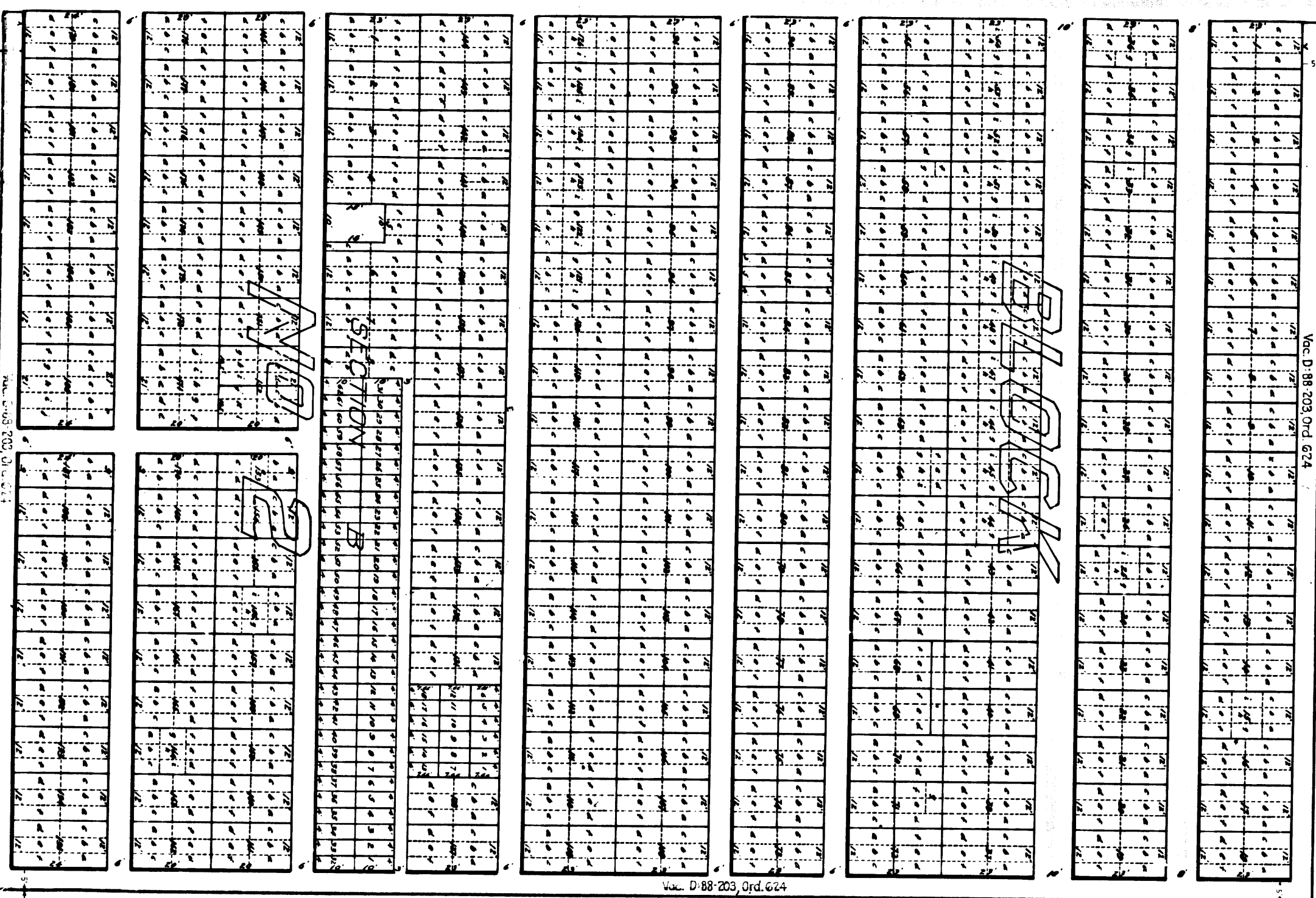


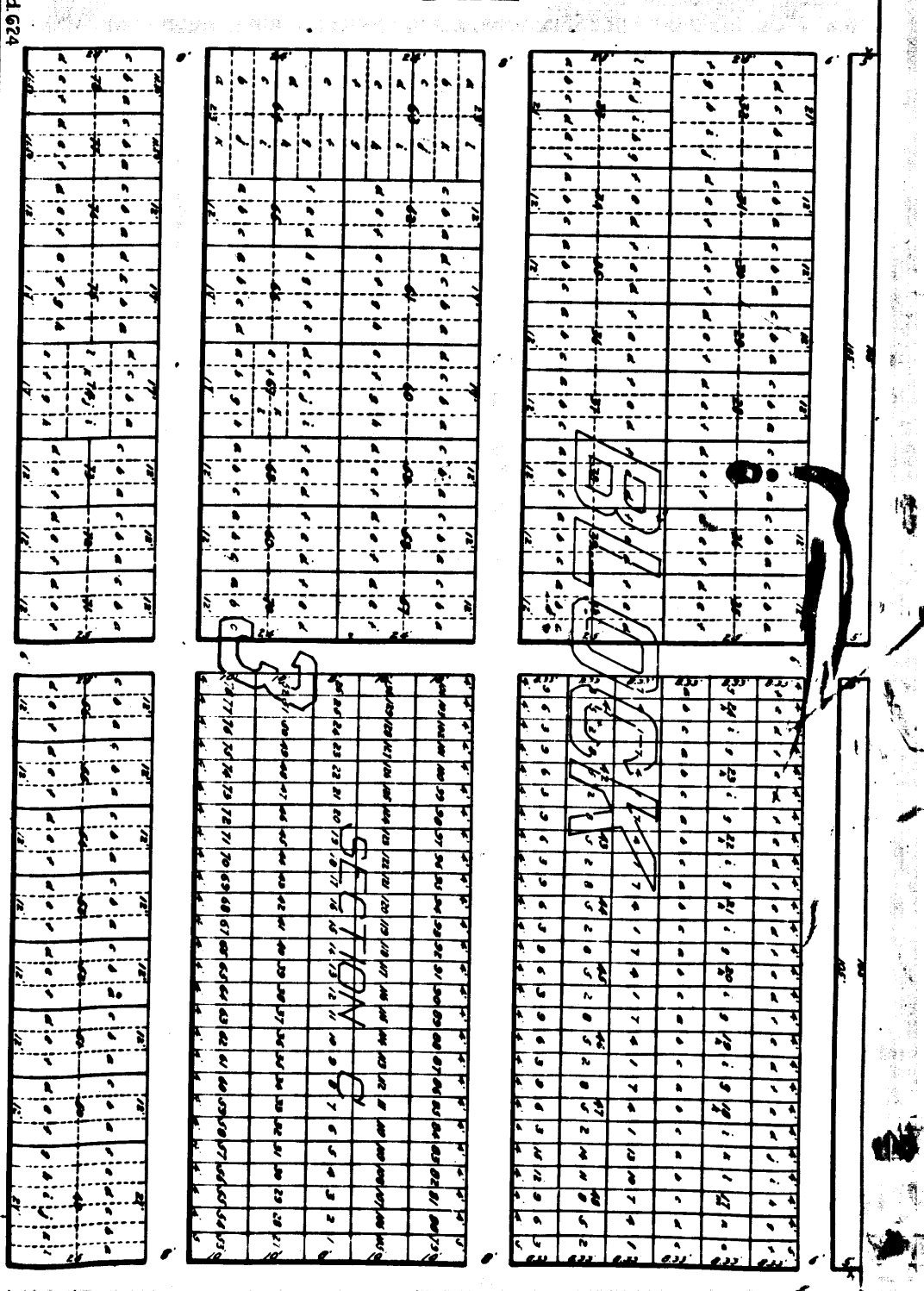
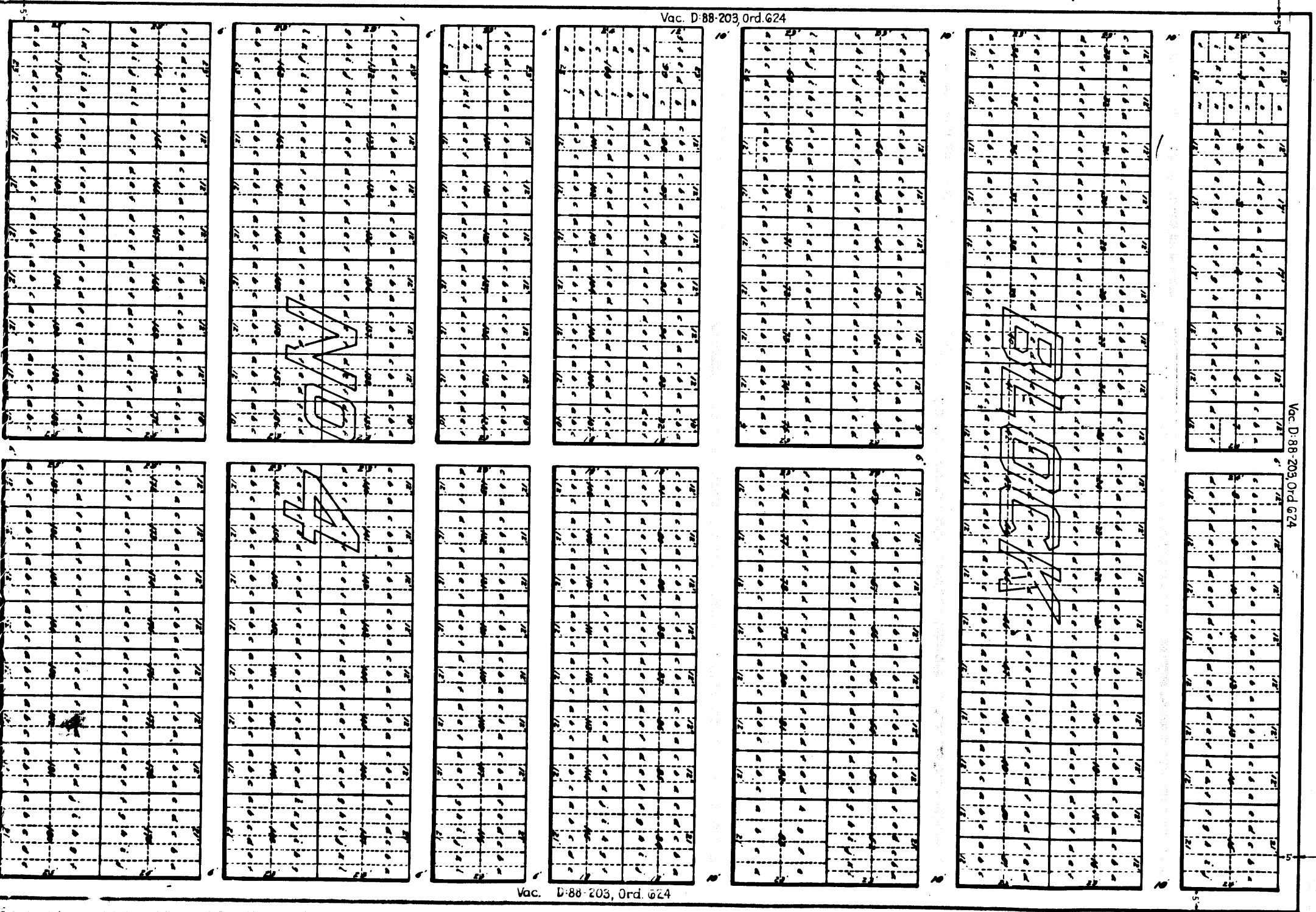
FOURTEENTH

STREET

87



This Section Subdivided and shown  
 SECTION 1  
 Applicant's Filed Map No. 369  
 A



MYRTLE AVENUE

MYRTLE

MYRTLE AVENUE

R.F. 335  
 A1 OF A4

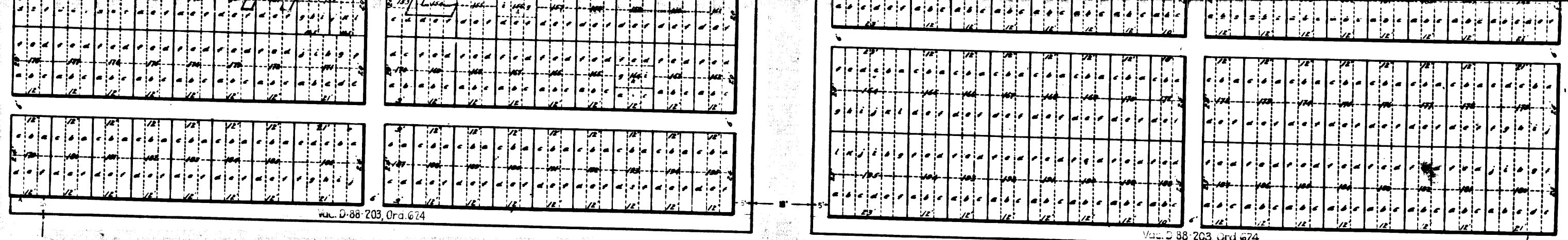
8  
 BLOCK

D-89-1, OR 12388-40  
 City of Santa Monica to  
 R. M. Greary

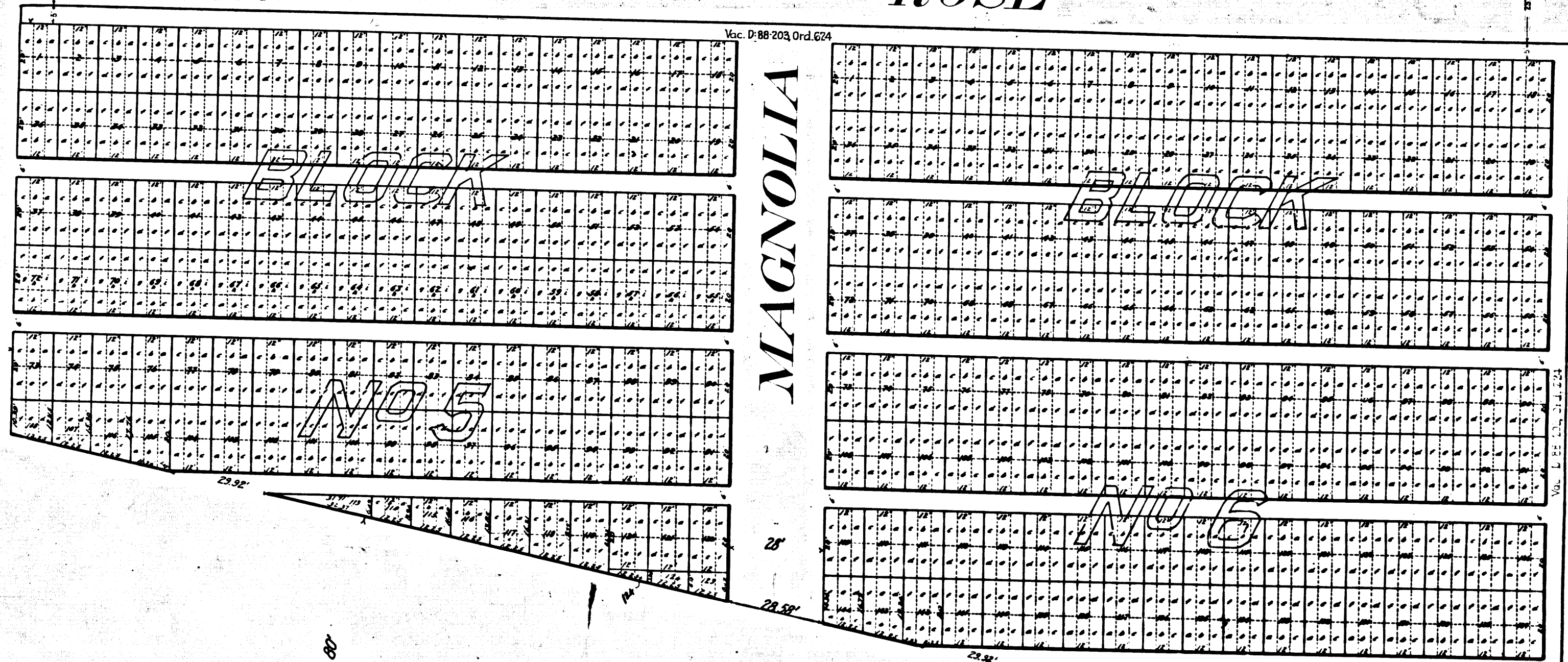
Vac. D-88-203, Ord. 624

D-88-203, Ord. 624

FOUR



ROSE



MAGNOLIA

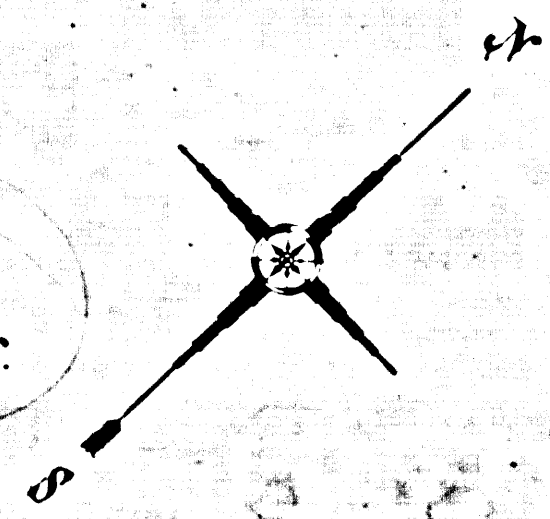
PALM

PICO

MAP OF  
**WOODLAWN**

BEING  
 THE MUNICIPAL CEMETERY  
 OF THE CITY OF  
**SANTA MONICA**  
 CALIFORNIA

Recorders No 335  
 Filed Sept. 23, 1916.



R.F. 335  
 A2 OF A4

WILLIAM H. CARTER.

SCALE 1 IN. = 20 FT.

JOHN A. MORTON.

BLOCK  
No 9

BLOCK  
No 10

BLOCK  
No 15

STREET

Never dedicated

AVENUE

Never dedicated

BLOCK  
No 8

BLOCK

BLOCK  
No 14

BLOCK  
ELK'S REST  
No 16

BLOCK  
No 11

Never dedicated

Never dedicated

E-14-216, Ord. 628 (Street Name)

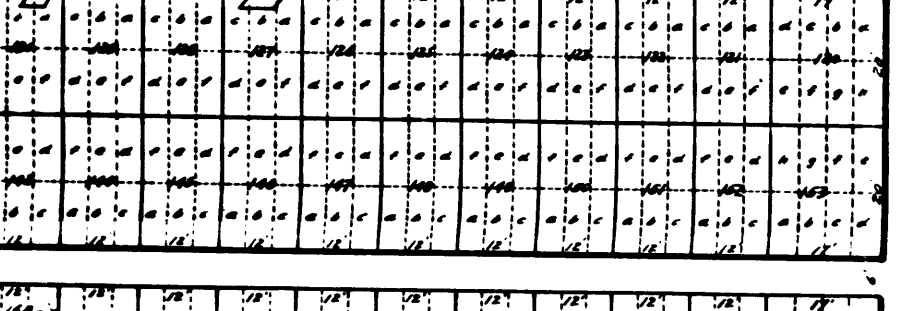
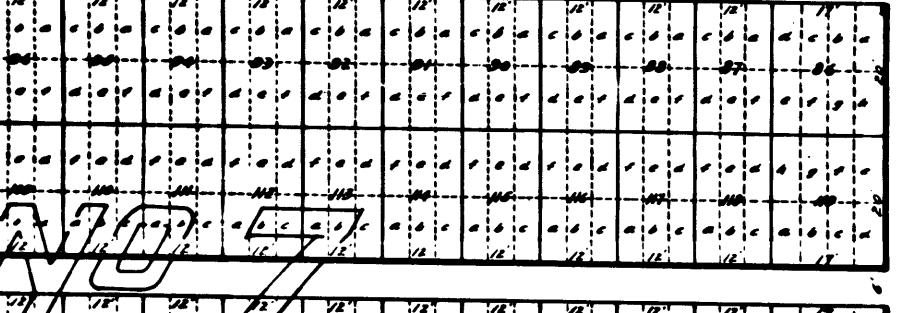
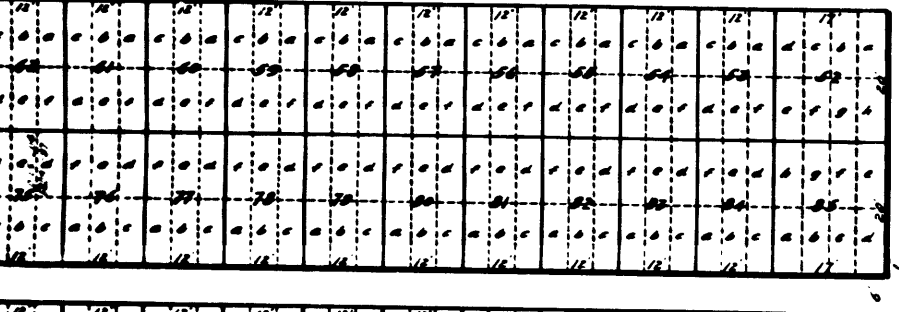
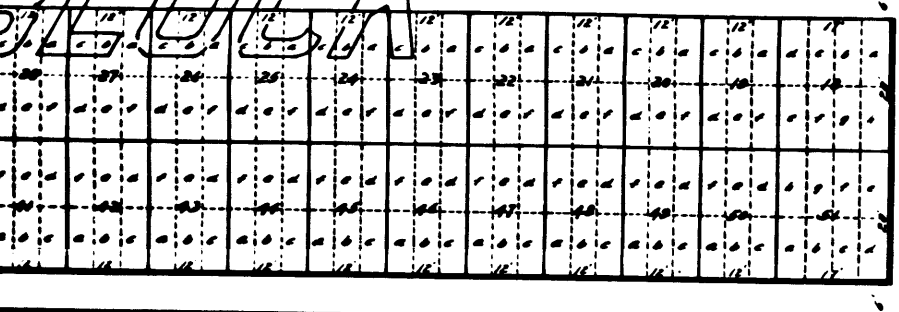
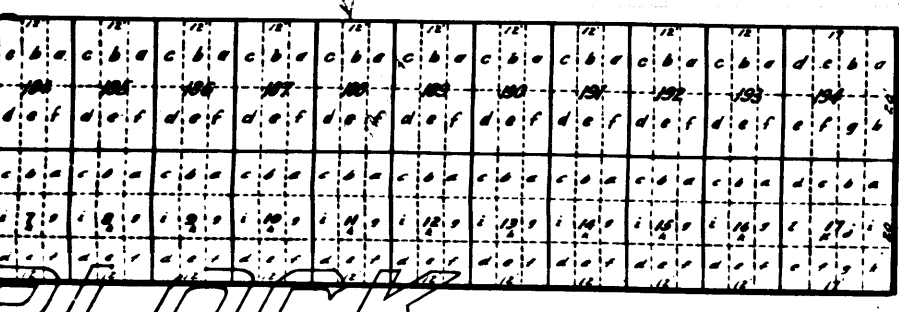
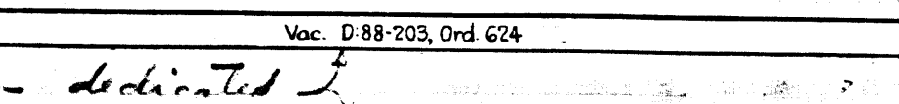
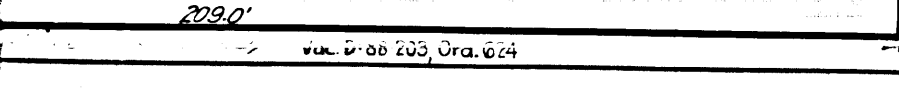
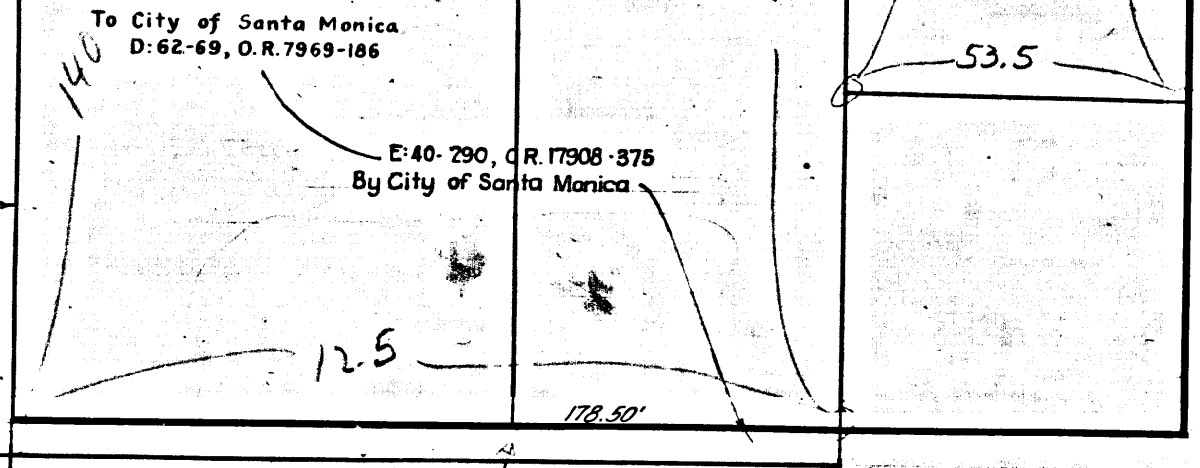
E-72-195, O.R. 22964-367  
By City of Santa Monica

To City of Santa Monica  
D: 62-69, O.R. 7969-186

E-40-290, O.R. 17908-375  
By City of Santa Monica

REF	335	
A3	OF	A4

No 16

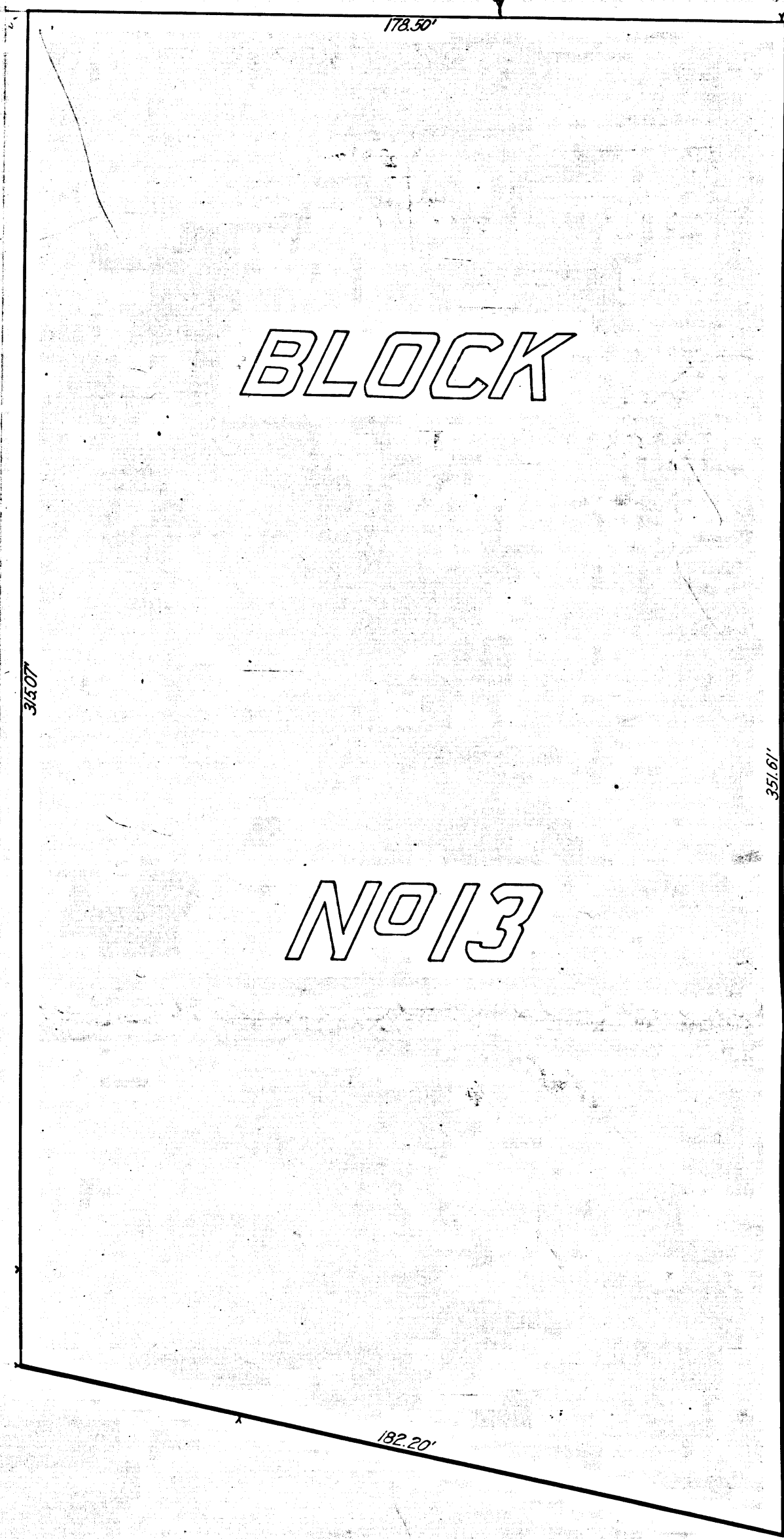
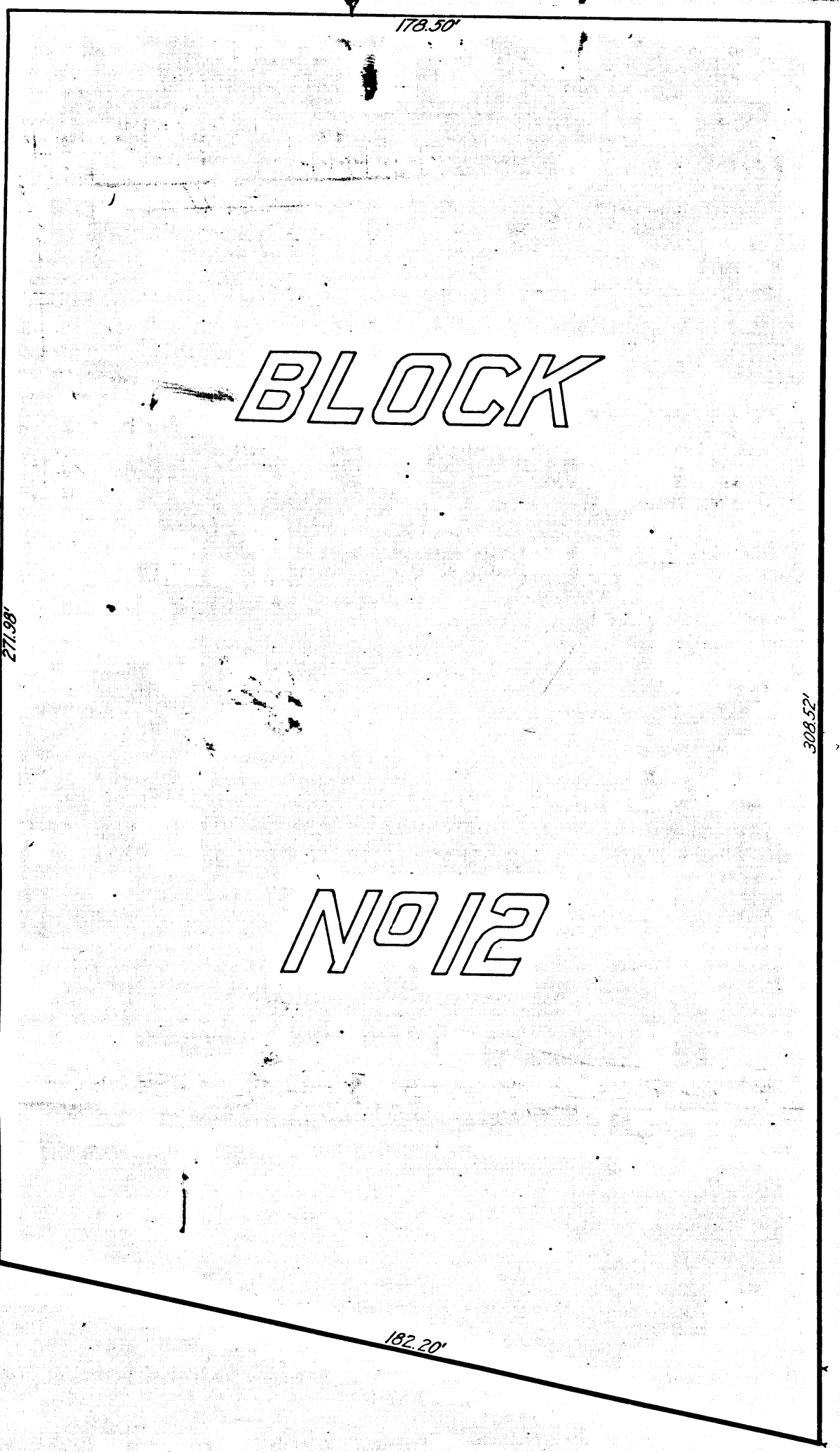


MAPLE

dedicated

dedicated AVENUE

dedicated



IVY

SEVENTEENTH

E:14-216, Ord. 628 (Street Series)

R.F. 335

A4 OF A4

BOULEVARD