

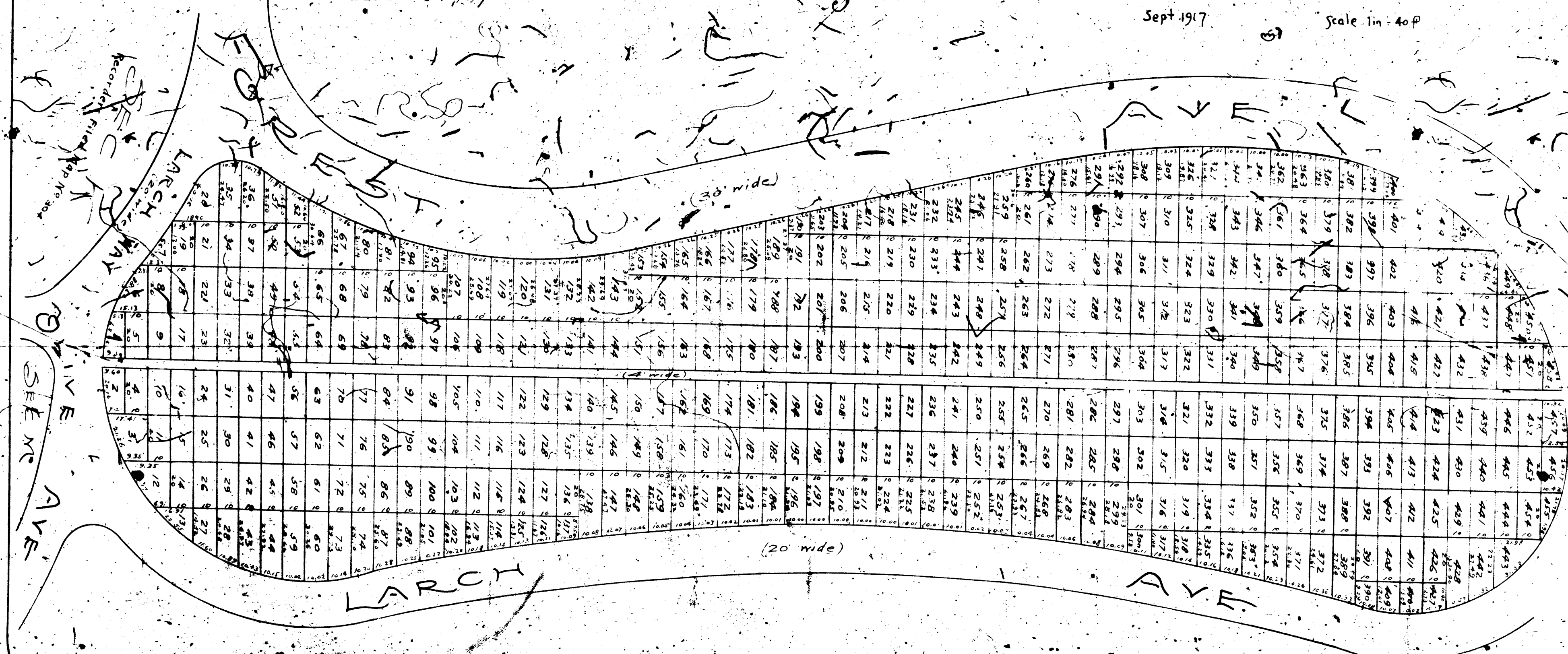
Filed
 Owner
 OCT 22 1917
 4 PM

We hereby certify that this map correctly shows the subdivision of that section which is mentioned in the title thereof, and that we caused such map and subdivision to be made, as and for an addition to the portion of the Forest Lawn Cemetery Association's property, used for cemetery purposes.

FOREST LAWN CEMETERY ASSOCIATION
 by *Walter H. Hill* President
Ed. Peters Secretary

Dated October 22, 1917

Map of Amended
SEC. L
 FOREST LAWN
 TROPICO, CAL.
 Sept. 1917 Scale 1 in = 40 ft



Filed Oct. 22, 1917

RF 375