

Exhibit "A"

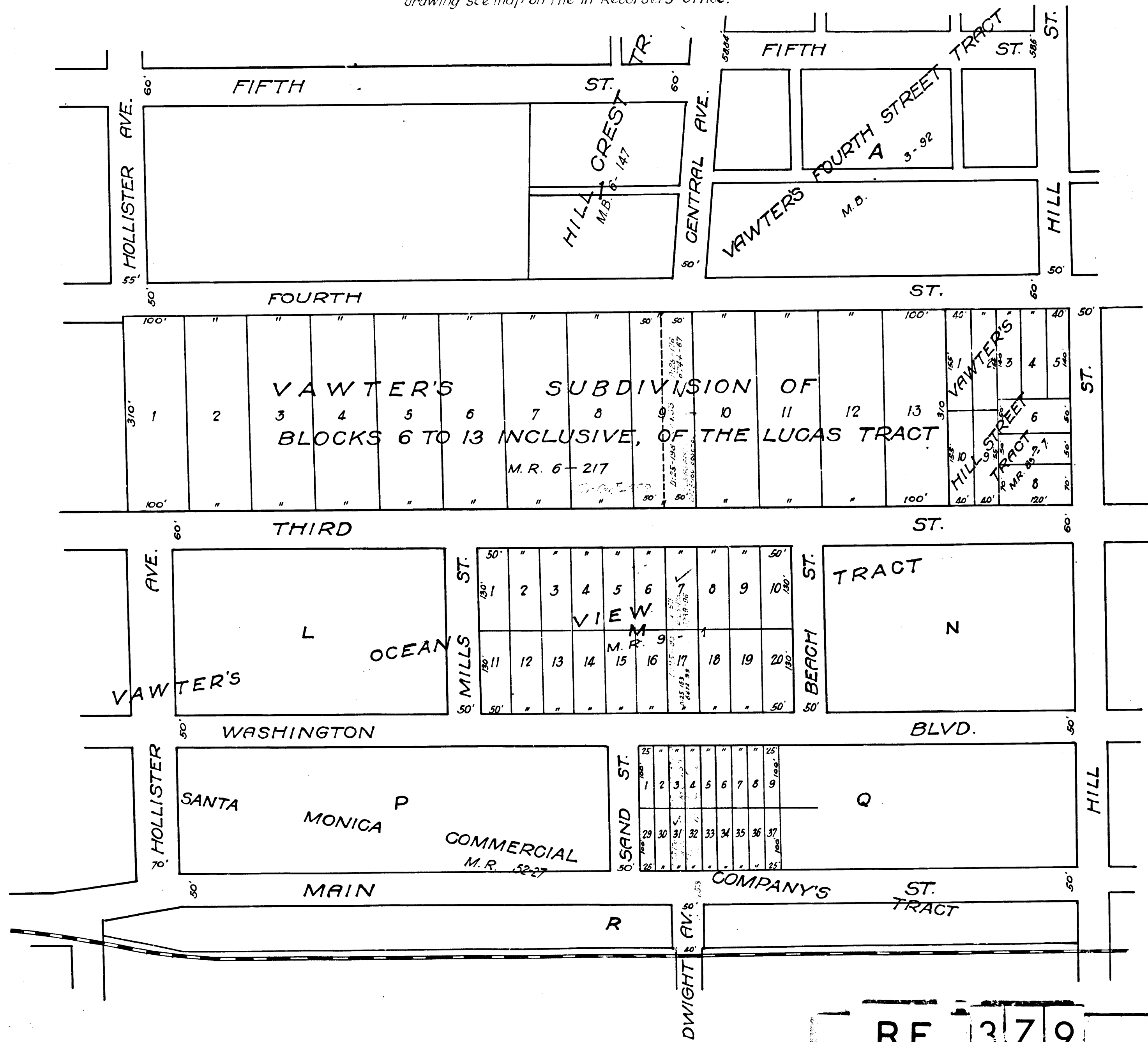
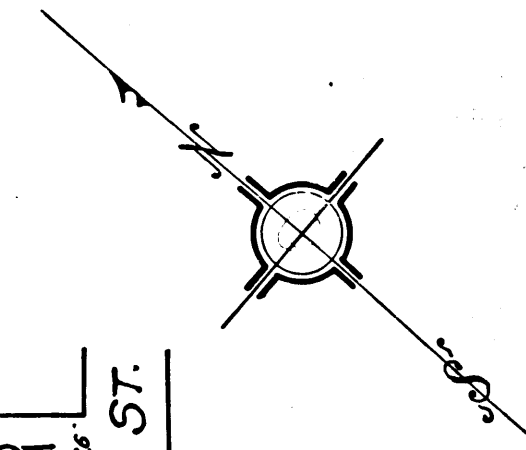
PLAT

Showing lands to be taken for opening and extending Central Avenue in the City of Santa Monica, California, between the present Southwesterly terminus of said Avenue and Main Street---per Special Ord. No. 42 (Street Series), being the Ordinance of Intention to open and extend said Central Avenue, adopted September 5, 1917. Dec. 7, 1917

Scale: 1" = 120'

John A. Morton
City Engineer

Note: This map does not show boundaries of Assessment District. For complete drawing see map on file in Records Office.



Handwritten scribbles and numbers on the right margin, including '67-57' and '1-17'.

R.F. 379

(Filed Feb. 9, 1918)