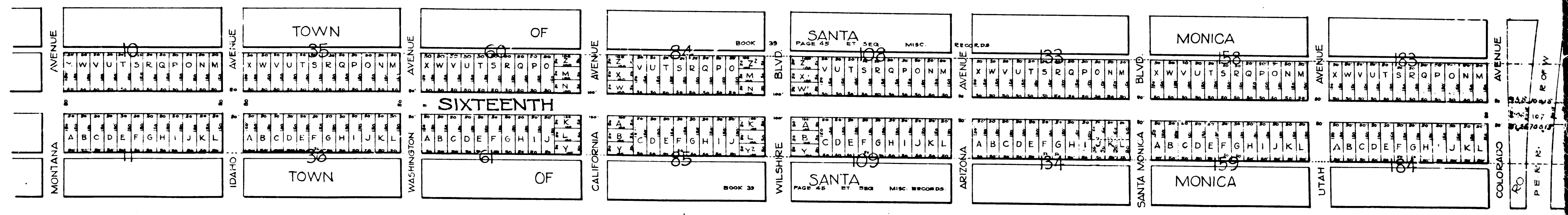


PLAT

SHOWING LANDS TO BE TAKEN AND DISTRICT TO BE ASSESSED TO PAY THE COSTS AND EXPENSES OF OPENING AND EXTENDING SIXTEENTH STREET IN THE CITY OF SANTA MONICA, CALIFORNIA, BETWEEN THE SOUTHEAST LINE OF COLORADO AVENUE AND THE NORTHWEST LINE OF THE STRIP OF LAND CONVEYED TO THE CITY OF SANTA MONICA, AS PER DEED RECORDED IN BOOK 2914, PAGE 65, OF DEEDS, LOS ANGELES COUNTY RECORDS, ALL AS DESCRIBED IN AND IN COMPLIANCE WITH SPECIAL ORDINANCE NO 95 (STREET SERIES), BEING THE ORDINANCE OF INTENTION TO OPEN AND EXTEND SAID SIXTEENTH STREET, ADOPTED BY THE CITY COUNCIL OF THE CITY OF SANTA MONICA, MARCH 10, 1970. ON THIS PLAT "N" IS USED FOR THE WORD "NUMBER", AND THE MARK "F" FOR THE WORD FEET. FIGURES NEXT TO THE PROPERTY LINES SHOW THE LENGTH OF SAID LINES IN FEET. OTHER FIGURES SHOW THE NUMBERS OF THE LOTS. NUMBERS IN RED CORRESPOND TO THE ASSESSMENT NUMBERS IN THE REPORT OF THE COMMISSIONERS.

APRIL 1970 CITY OF SANTA MONICA JOHN A. MORTON, CITY ENGR.



*Rec. file
409 LACORP*

R.F. 409
A1 OF A2

PLAT

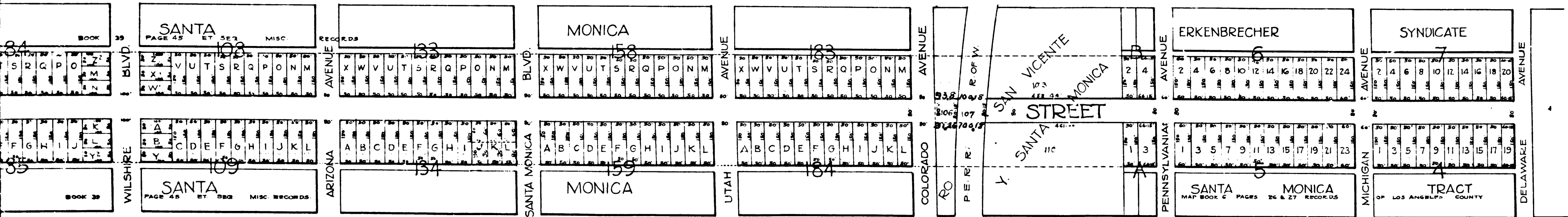
SHOWING LANDS TO BE TAKEN AND DISTRICT TO BE ASSESSED TO PAY THE COSTS AND EXPENSES OF OPENING AND EXTENDING SIXTEENTH STREET IN THE CITY OF SANTA MONICA, CALIFORNIA, BETWEEN THE SOUTHEAST LINE OF COLORADO AVENUE AND THE NORTHWEST LINE OF THE STRIP OF LAND CONVEYED TO THE CITY OF SANTA MONICA, AS PER DEED RECORDED IN BOOK 2914, PAGE 65, OF DEEDS, LOS ANGELES COUNTY RECORDS, ALL AS DESCRIBED IN AND IN COMPLIANCE WITH SPECIAL ORDINANCE No 95, (STREET SERIES), BEING THE ORDINANCE OF INTENTION TO OPEN AND EXTEND SAID SIXTEENTH STREET, ADOPTED BY THE CITY COUNCIL OF THE CITY OF SANTA MONICA, MARCH 10, 1970. ON THIS PLAT "N^o" IS USED FOR THE WORD "NUMBER", AND THE MARK "F" FOR THE WORD FEET, FIGURES NEXT TO THE PROPERTY LINES SHOW THE LENGTH OF SAID LINES IN FEET. OTHER FIGURES SHOW THE NUMBERS OF THE LOTS, NUMBERS IN RED CORRESPOND TO THE ASSESSMENT NUMBERS IN THE REPORT OF THE COMMISSIONERS.

Special Ordinance No 107 (Street Series)

APRIL 1970

CITY OF SANTA MONICA

JOHN A. MORTON, CITY ENGR.



R.F. 409

A2 OF A2