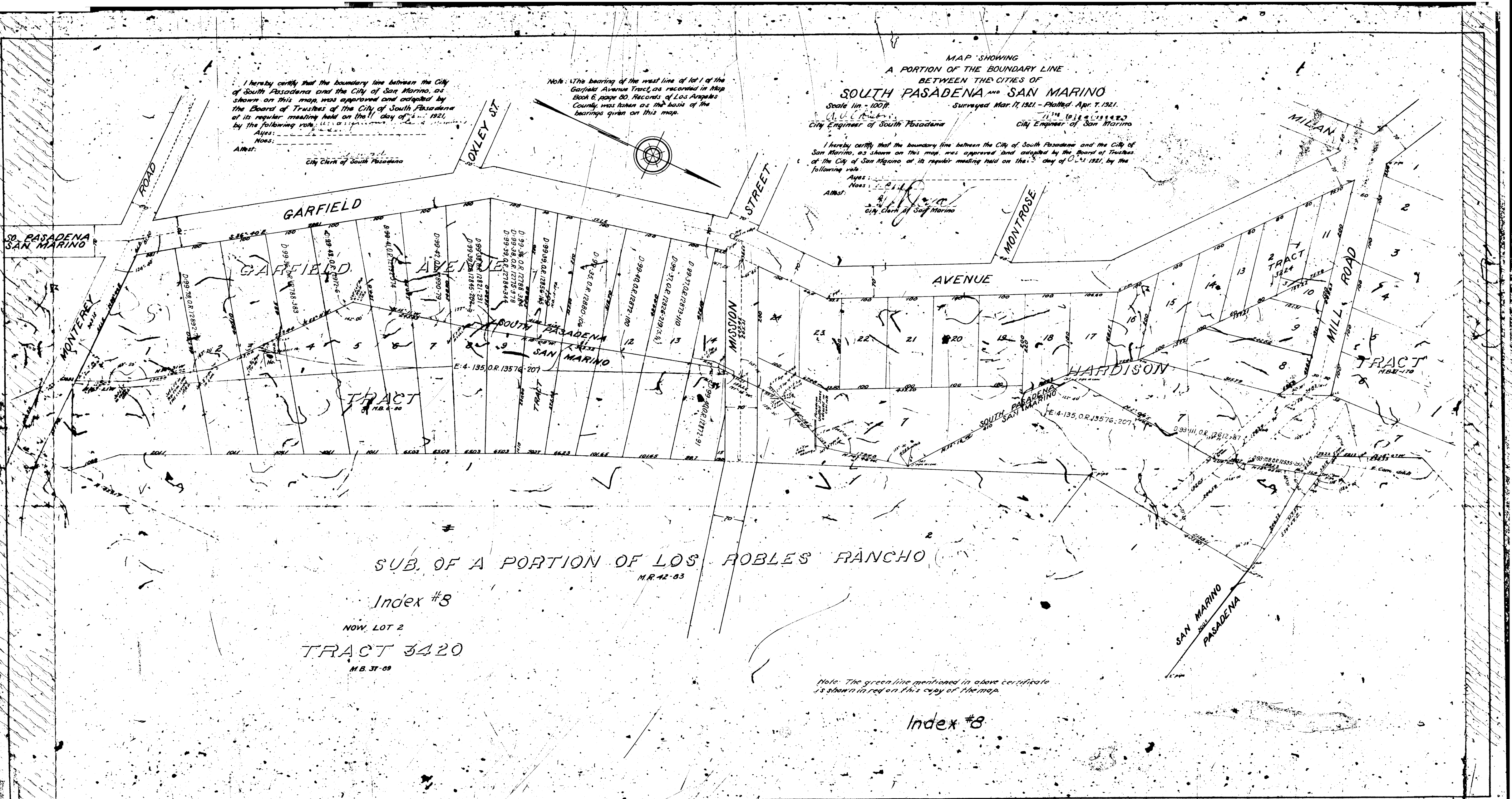


I hereby certify that the boundary line between the City of South Pasadena and the City of San Marino, as shown on this map, was approved and adopted by the Board of Trustees of the City of South Pasadena at its regular meeting held on the 11th day of April, 1921, by the following vote: 4 Ayes: 0 Noes:
Attest: _____
City Clerk of South Pasadena

Note: The bearing of the west line of lot 1 of the Garfield Avenue Tract, as recorded in Map Book 6, page 80, Records of Los Angeles County, was taken as the basis of the bearings given on this map.

MAP SHOWING
A PORTION OF THE BOUNDARY LINE
BETWEEN THE CITIES OF
SOUTH PASADENA AND SAN MARINO
Scale 1 in = 100 ft
Surveyed Mar. 17, 1921. - Plotted Apr. 7, 1921.
City Engineer of South Pasadena City Engineer of San Marino

I hereby certify that the boundary line between the City of South Pasadena and the City of San Marino, as shown on this map, was approved and adopted by the Board of Trustees of the City of San Marino at its regular meeting held on the 5th day of April, 1921, by the following vote: 4 Ayes: 0 Noes:
Attest: _____
City Clerk of San Marino



SUB. OF A PORTION OF LOS ROBLES RANCHO
M.B. 42-83

Index #8

NOW, LOT 2

TRACT 3420

M.B. 37-09

Note: The green line mentioned in above certificate is shown in red on this copy of the map.

Index #8