

PLAT OF THE ASSESSMENT DISTRICT

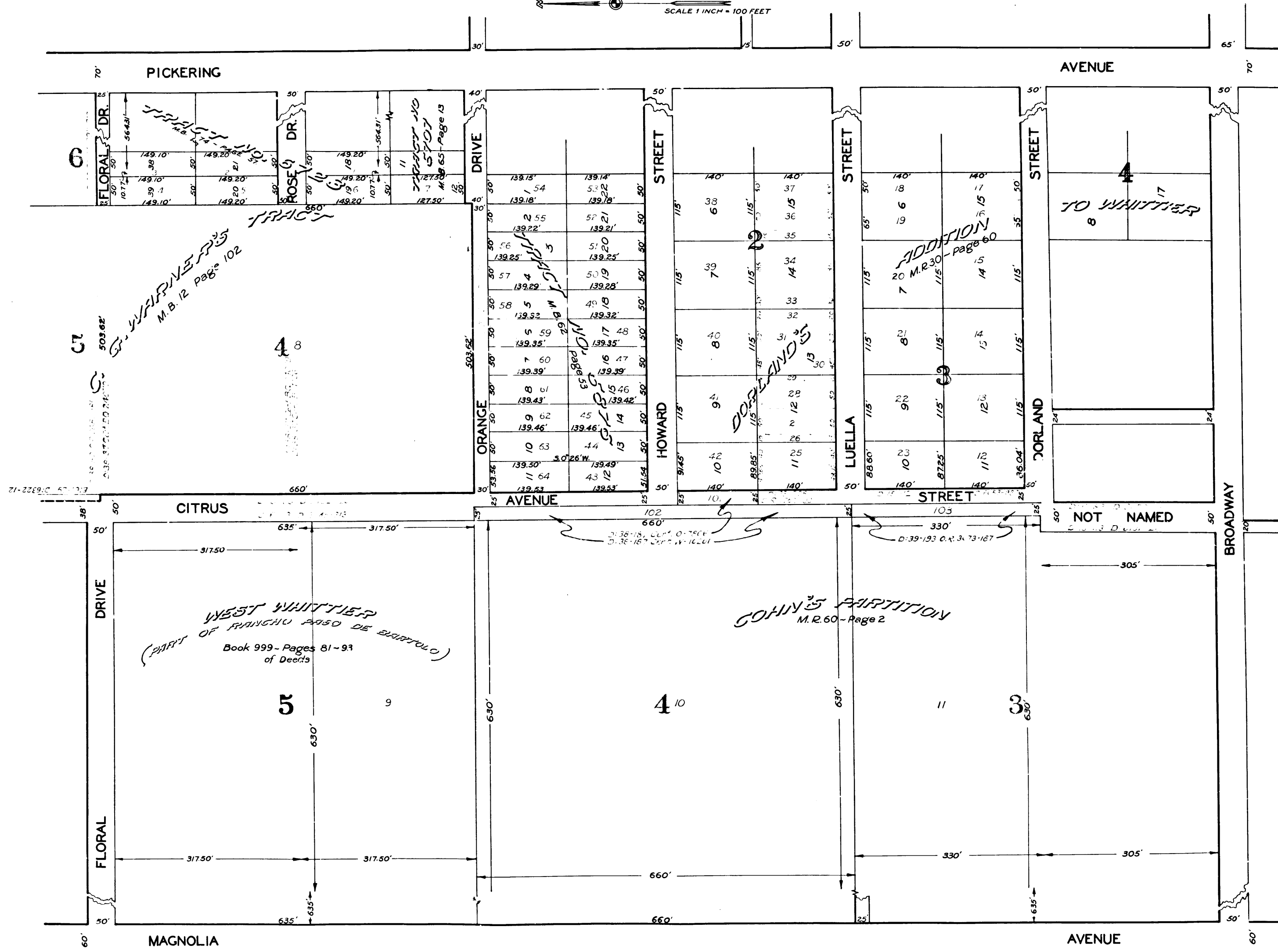
Showing lands to be taken and the lands to be assessed for the opening and widening of CITRUS AVENUE from the produced North line of Orange Drive to the produced center line of Dorland Street, in the City of Whittier, California, in accordance with Resolution of Intention of the Board of Trustees of said City, No. 817, adopted April 9th, A.D. 1923, each district, block, lot, or portion of lot and its dimensions within the boundaries of the assessment district and the relative location of each of such districts, blocks, lots, or portions of lots to the improvement. Yellow tinting shows the lands to be taken for the opening and widening of Citrus Avenue. Other tintings show the boundaries of those portions of the recorded subdivisions shown hereon. Exterior boundaries of assessment district are shown and colored green. Figures in black next to the property lines show each the length of said line in feet. Other figures in black show the numbers of the lots. Brown lines and figures show property lines and dimensions in those cases where the actual holdings differ from the recorded subdivisions. Each separate district, block, lot or portion of lot, within the boundaries of the assessment district, is numbered in red to correspond with the red assessment numbers in the report of the Commissioners. Hereon the mark "M.S." means Miscellaneous Records and M.B. means Map Book. All records referred to hereon are records of Los Angeles County, California.

Filed Dec 19, A.D. 1923. Approved by the Board of Trustees Dec 3, A.D. 1923.
 Clarence O. Woodhead City Clerk
 Clarence O. Woodhead City Clerk

Confirmed and adopted by the Board of Trustees Jan 21, A.D. 1924

Clarence O. Woodhead City Clerk

SCALE 1 INCH = 100 FEET



State of California) ss
 County of Los Angeles)
 I, Clarence O. Woodhead, City Clerk of the City of Whittier do hereby certify the foregoing to be a full, true and correct copy of the Plat of the Assessment District for the opening and Widening of Citrus Avenue from the produced north line of Orange Drive to the produced center line of Dorland Street as confirmed and adopted by the Board of Trustees of the City of Whittier, on the 21st day of January, A.D. 1924.
 In witness whereof I have hereunto set my hand and affixed the corporate seal of said City at my office on this, the 22nd day of January, A.D. 1924.
 Clarence O. Woodhead
 City Clerk of the City of Whittier.

R.F. 462